



NAPA COUNTY REGIONAL PARK &
OPEN SPACE DISTRICT

Moore Creek Park

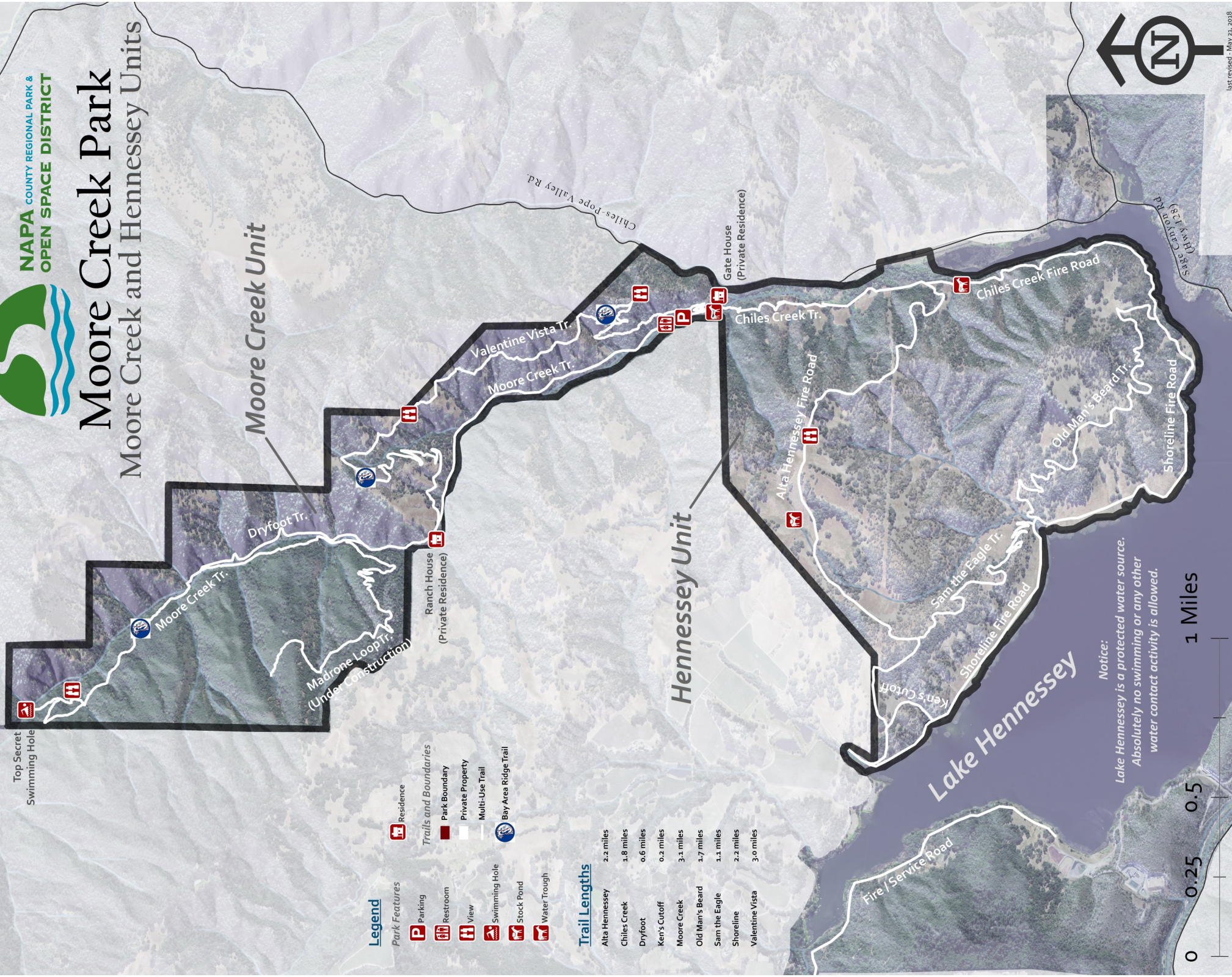
Moore Creek and Hennessey Units

Legend

- Park Features**
- Parking
 - Restroom
 - View
 - Swimming Hole
 - Stock Pond
 - Water Trough
- Residence**
- Residence
- Trails and Boundaries**
- Park Boundary
 - Private Property
 - Multi-Use Trail
 - Bay Area Ridge Trail

Trail Lengths

- Alta Hennessey 2.2 miles
- Chiles Creek 1.8 miles
- Dryfoot 0.6 miles
- Ken's Cutoff 0.2 miles
- Moore Creek 3.1 miles
- Old Man's Beard 1.7 miles
- Sam the Eagle 1.1 miles
- Shoreline 2.2 miles
- Valentine Vista 3.0 miles



Notice:
Lake Hennessey is a protected water source.
Absolutely no swimming or any other
water contact activity is allowed.

0 0.25 0.5 1 Miles



Take Care

This is wild country. Please take care of yourself and the natural environment, and show respect for others. You are responsible for your own safety.

- ⇒ *Bring lots of water.* There is no potable water available at the park.
- ⇒ *Respect private property.* Please observe Park Boundary signs and do not trespass.
- ⇒ Lake Hennessey is a key city drinking water source. *There is absolutely no swimming or water contact allowed.* This includes dogs, horses, and any other animal under your supervision. The lake is monitored 24 hours a day 7 days a week; you *will* be seen and may be prosecuted. Trust us on this.
- ⇒ Please leave gates the way you find them.
- ⇒ Watch out for and share the trails with others, including hikers, cyclists, and equestrians. Practice the *Spirit of Howdy...* greet other users and ask permission before passing. Never surprise horses. Be extra careful on blind curves.
- ⇒ Avoid potential hazards, such as poison oak, rattlesnakes, ticks, mountain lions, bears, loose rocks, cattle, and steep slopes. Exercise particular care at wet stream crossings.
- ⇒ All wild plants, animals and historic features are important—please don't gather, remove, harm, harass, or damage any of these resources.
- ⇒ No hunting or shooting is allowed in the park.
- ⇒ Dogs are allowed in the Hennessey Unit *on leash only.*
- ⇒ Motor vehicles are not permitted unless previously authorized. (Caution: some trails are also service roads. Authorized vehicles may be present.)
- ⇒ Please. No open fires or smoking.
- ⇒ In an emergency, call 911. However, note that cell phone service within the park is very limited.

About the Park

Moore Creek Park includes some 1,600 acres of rugged terrain including Oak woodlands, Douglas Fir and Madrone forest, grasslands, and chaparral. Wildlife in the park is plentiful, including large mammals such as black bears, mountain lions, bobcat, gray fox and coyote.

Prior to its acquisition by the Napa Open Space District in 2008, the 700 acre Moore Creek Unit was a privately owned cattle ranch. The 900 acre Hennessey Unit consists of watershed land purchased by the City of Napa when it developed Conn Dam and Lake Hennessey in the 1940's. The lake was named after Edwin R. Hennessey, a Napa banker who helped secure local development of the reservoir when an earlier Federal flood control project stalled.

The Napa Open Space District regularly sponsors volunteer work parties at Moore Creek to build and repair trails, remove invasive plants, and restore habitat. If you're interested in volunteering contact us at www.napaoutdoors.org.

Seasonal Closures

On rare occasion, Moore Creek Park may be closed due to high water or periods of extreme fire hazard. Please check our website for up-to-date information.

This brochure is made possible by a generous contribution from



Moore Creek Park is managed by the

NAPA OPEN SPACE DISTRICT

In partnership with the City of Napa Water Division and with the support of many volunteers, community organizations, and businesses.

For current information about trail conditions, temporary closures, and volunteer opportunities, visit the District web site at www.napaoutdoors.org



NAPA COUNTY REGIONAL PARK &
OPEN SPACE DISTRICT