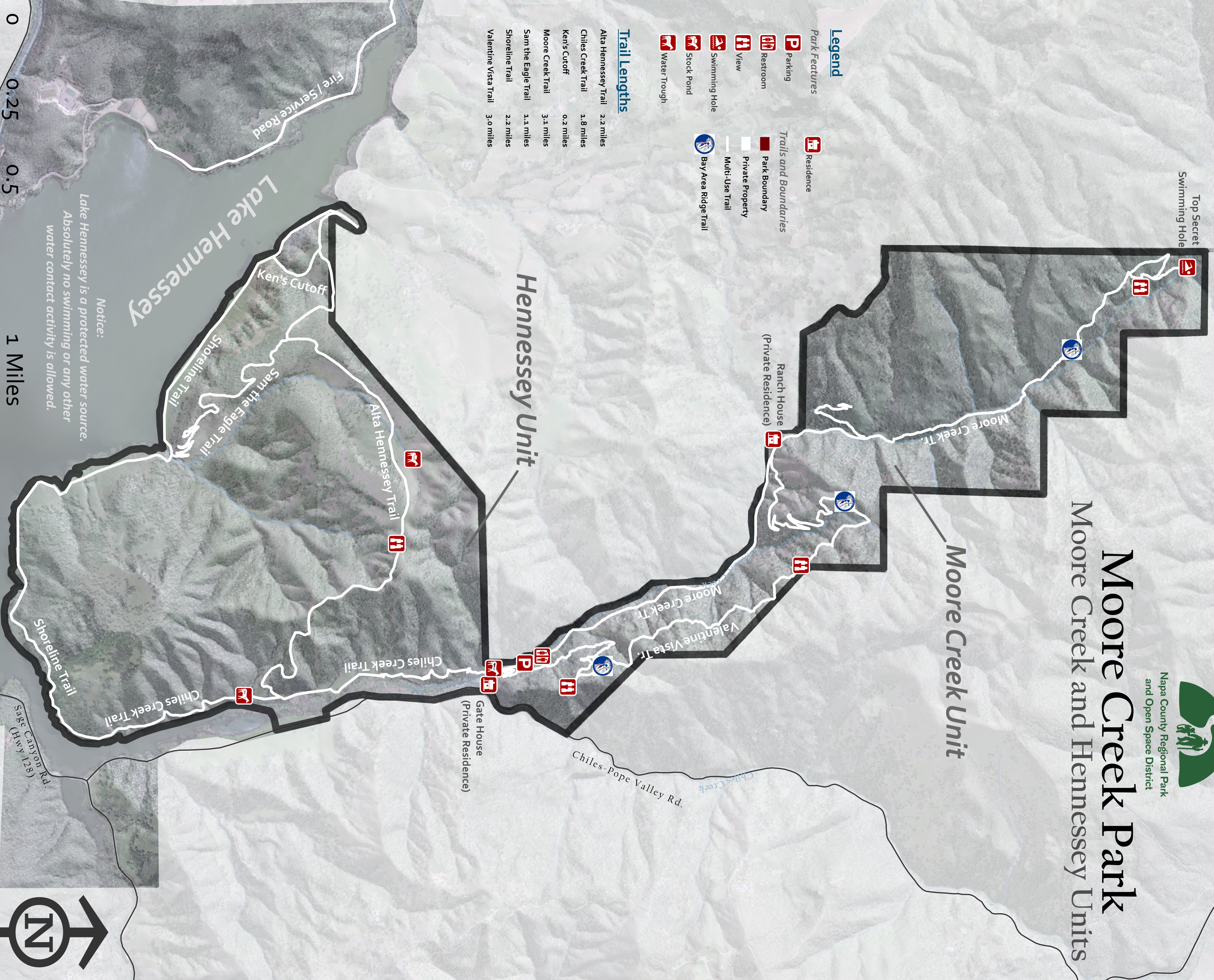




Napa County Regional Park
and Open Space District

Moore Creek Park

Moore Creek and Hennessey Units



- Legend**
- Park Features**
- P Parking
 - Restroom
 - View
 - Swimming Hole
 - Stock Pond
 - Water Trough
- Trails and Boundaries**
- Residence
 - Park Boundary
 - Private Property
 - Multi-Use Trail
 - Bay Area Ridge Trail

Trail Lengths

Alta Hennessey Trail	2.2 miles
Chiles Creek Trail	1.8 miles
Ken's Cutoff	0.2 miles
Moore Creek Trail	3.1 miles
Sam the Eagle Trail	1.1 miles
Shoreline Trail	2.2 miles
Valentine Vista Trail	3.0 miles

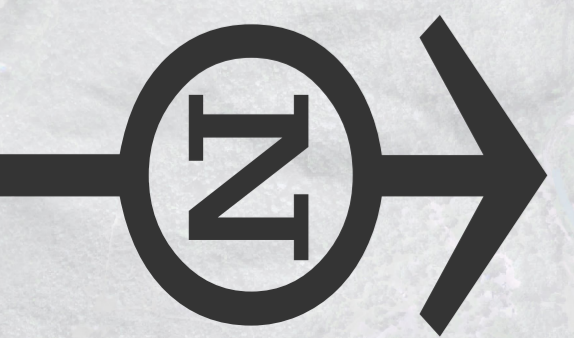
Lake Hennessey

Notice:
Lake Hennessey is a protected water source.
Absolutely no swimming or any other
water contact activity is allowed.

0 0.25 0.5 1 Miles

Sage Canyon Rd.
(Hwy 128)

Chiles-Pope Valley Rd.



Take Care

This is wild country. Please take care of yourself and the natural environment, and show respect for others. You are responsible for your own safety.

- ⇒ *Bring lots of water.* There is no potable water available at the park.
- ⇒ *Respect private property.* Please observe Park Boundary signs and do not trespass.
- ⇒ Lake Hennessey is a key city drinking water source. *There is absolutely no swimming or water contact allowed.* This includes dogs, horses, and any other animal under your supervision. The lake is monitored 24 hours a day 7 days a week; you *will* be seen and may be prosecuted. Trust us on this.
- ⇒ Please leave gates the way you find them.
- ⇒ Watch out for and share the trails with others, including hikers, cyclists, and equestrians. Practice the *Spirit of Howdy...* greet other users and ask permission before passing. Never surprise horses. Be extra careful on blind curves.
- ⇒ Avoid potential hazards, such as poison oak, rattlesnakes, ticks, mountain lions, bears, loose rocks, cattle, and steep slopes. Exercise particular care at wet stream crossings.
- ⇒ All wild plants, animals and historic features are important—please don't gather, remove, harm, harass, or damage any of these resources.
- ⇒ No hunting or shooting is allowed in the park.
- ⇒ Dogs are allowed in the Hennessey Unit *on leash only.*
- ⇒ Motor vehicles are not permitted unless previously authorized. (Caution: some trails are also service roads. Authorized vehicles may be present.)
- ⇒ Please. No open fires or smoking.
- ⇒ In an emergency, call 911. However, note that cell phone service within the park is very limited.

Getting There

Moore Creek Park is located half-way between the cities of Napa and Calistoga, to the north and east of Lake Hennessey. To get to the park, take the Silverado Trail north from Napa, or south from points upvalley to Highway 128, then travel east on Highway 128 for 3.8 miles. When you get to the eastern end of Lake Hennessey, turn left onto Chiles-Pope Valley Road, and travel north 1.5 miles. The park entrance is on your left. There is a yellow house immediately adjacent the park entrance driveway; please watch your speed and do not disturb the residents.

On occasion, Moore Creek Park may be closed due to high water or periods of extreme fire hazard. Please check our website (www.NapaOutdoors.org) for up-to-date information.

About the Park

Moore Creek Park includes some 1,600 acres of rugged terrain including Oak woodlands, Douglas Fir and Madrone forest, grasslands, and chaparral. Wildlife in the park is plentiful, including large mammals such as black bears, mountain lions, bobcat, gray fox and coyote.

Prior to its acquisition by the Napa County Regional Park and Open Space District in 2008, the 700 acre Moore Creek Unit was a privately owned cattle ranch and vacation property. The 900 acre Hennessey Unit consists of watershed land purchased by the City of Napa when it developed Conn Dam and Lake Hennessey in the 1940's. The lake was named after Edwin R. Hennessey, a Napa banker who helped secure local development of the reservoir when an earlier Federal flood control project stalled.

The Napa County Regional Park and Open Space District regularly sponsors volunteer work parties at Moore Creek to build and repair trails, remove invasive plants, and restore habitat. If you're interested in volunteering contact us at www.NapaOutdoors.org.



Moore Creek Park is managed by the Napa County Regional Park & Open Space District in partnership with the City of Napa Water Division and with the support of many volunteers, community organizations, and businesses.

For current information about trail conditions, seasonal closure dates, and volunteer opportunities, visit the District web site at www.NapaOutdoors.org



Napa County Regional Park
and Open Space District