



**Napa County Regional Park
and Open Space District**

Harold Kelly
Director, Ward One

Tony Norris
Director, Ward Two

Guy Kay
Director, Ward Three

Dave Finigan
Director, Ward Four

Myrna Abramowicz
Director, Ward Five

AGENDA

BOARD OF DIRECTORS REGULAR MEETING

Monday, November 5th, 2012 at 2:00 P.M.

1195 Third Street, Third Floor, Napa, Calif. 94559

General Information

Agenda items will generally be considered in the order indicated below, except for Set Matters, which will be considered at the time indicated. Agenda items may from time to time be taken out of order at the discretion of the President.

The meeting room is wheelchair accessible. Assistive listening devices and interpreters are available through the District Secretary. Requests for disability related modifications or accommodations, aids, or services may be made to the Secretary's office no less than than 48 hours prior to the meeting date by contacting 707.259.8603.

Any member of the audience desiring to address the District on a matter on the Agenda, please proceed to the rostrum and, after receiving recognition from the President, give your name, address, and your comments or questions. In order that all interested parties have an opportunity to speak, please be brief and limit you comments to the specific subject under discussion. Time limitations shall be at the discretion of the President.

State law requires agency officers (Directors and Officers) to disclose, and then be disqualified from participation in, any proceeding involving a license, permit, or other entitlement for use, if the officer has received from any participant in the proceeding an amount exceeding \$250 within the prior 12 month period. State law also requires any participant in a proceeding to disclose on the record any such contributions to an agency officer.

All materials relating to an agenda item for an open session of a regular meeting of the Board of Directors which are provided to a majority or all of the members of the Board by Board members, staff or the public within 72 hours of but prior to the meeting will be available for public inspection, on and after at the time of such distribution, in the NCRPOSD Office at 1195 Third Street, Suite 210, Napa, California 94559, Monday through Friday, between the hours of 8:00 a.m. and 4:30 p.m., except for County holidays. Materials distributed to a majority or all of the members of the Board at the meeting will be available for public inspection at the public meeting if prepared by the members of the Board or County staff and after the public meeting if prepared by some other person. Availability of materials related to agenda items for public inspection does not include materials which are exempt from public disclosure under Government Code §§6253.5, 6254, 6254.3, 6254.7, 6254.15, 6254.16, or 6254.22.

1. Call to Order and Roll Call

2. Public Comment

In this time period, anyone may address the Board of Directors regarding any subject over which the Board has jurisdiction but which is not on today's posted agenda. In order to provide all interested parties an opportunity to speak, time limitations shall be at the discretion of the President. As required by Government Code, no action or discussion will be undertaken on any item raised during this Public Comment period.

3. Set Matters

- 2:00 pm Update and discussion of operations, accomplishments and next steps for Bothe-Napa Valley State Park and the Bale Grist Mill State Historic Park (led by Park Manager Sandy Jones)
- 2:30 pm Presentation by Napa Design Partners regarding ideas for the restoration, improvement and operation of Bothe-Napa Valley State Park

4. Administrative Items

- a. Consideration and potential approval of Minutes of the Board of Directors regular meeting of October 8, 2012.
- b. Consideration and potential authorization for the General Manager to send a letter to the Local Agency Formation Commission regarding their municipal and sphere of influence review for the Lake Berryessa Estates Resort Improvement District.
- c. Consideration and potential acceptance of the District's independent financial audit for FY 2011-12.
- d. Receipt of report on expenditures, encumbrances, donations, and grants approved by District staff, and standing approval of ongoing expenses at Bothe-Napa Valley Park.
- e. Review of the District Projects Status Report.

5. Announcements by Board and Staff

In this time period, members of the Board of Directors and staff will announce meetings, events, and other matters of interest. No action will be taken by the Board on any announcements.

6. Agenda Planning

In this time period, members of the Board of Directors and staff will discuss matters for possible consideration at future meetings. Other than to determine whether and when such matters should be agendized, no action will be taken by the Board on these items unless specifically noted otherwise.

Next Special Board Meeting: Monday, November 19, 2012, 2:00 p.m.

7. Closed Session

- A. Conference with Real Property Negotiator (Government Code Section 54956.8)
Property: APN Nos 025-220-003,-016.-017 & -018
Agency Negotiator: John Woodbury, NCRPOSD General Manager
Negotiating Parties: NCRPOSD and John M. Bruce and Michael J. McDevitt
Under Negotiation: Instructions to Negotiator will concern terms and conditions

8. Adjournment



**Napa County Regional Park
and Open Space District**

Harold Kelly
Director, Ward One

Tony Norris
Director, Ward Two

Guy Kay
Director, Ward Three

Dave Finigan
Director, Ward Four

Myrna Abramowicz
Director, Ward Five

MINUTES

BOARD OF DIRECTORS REGULAR MEETING

Monday, October 8th, 2012 at 2:00 P.M.
1195 Third Street, Third Floor, Napa, Calif. 94559

1. Call to Order and Roll Call

Directors present: Harold Kelly, Myrna Abramowicz, Dave Finigan, and Tony Norris.

Directors absent: Guy Kay

Staff present: John Woodbury, Chris Apallas, Tracy Schulze and Sarah Minahen.

2. Public Comment

None

3. Set Matters

None

4. Administrative Items

- a. Consideration and potential approval of Minutes of the Board of Directors regular meeting of September 10, 2012.

HK-MA-DF-TN-GK

A

- b. Update on the operation and management of Bothe-Napa Valley Park and the Bale Grist Mill Historic Park, including financial results for the first six months (oral report).

John Woodbury gave the report.

- c. Consideration and potential approval of amendments to the budget for FY 2012-13.

Directors voted to approve the amendments to the budget.

MA-DF-HK-GK-TN

- d. Receipt of report on expenditures, encumbrances, donations, and grants approved by District staff, and standing approval of ongoing expenses at Bothe-Napa Valley Park.

John Woodbury gave the report.

- e. Review of the District Projects Status Report.

John Woodbury and Chris Cahill gave the report with discussions on Napa River Bay Trail, Berryessa Estates, Camp Berryessa, Trail Ridge Alignment, Spanish Valley, Crystal Flat, Stone Corral and Moore Creek.

5. Announcements by Board and Staff

In this time period, members of the Board of Directors and staff will announce meetings, events, and other matters of interest. No action will be taken by the Board on any announcements.

- Director Abramowicz – Save the date for the annual celebration on 1/9/2013 at Napa River Inn, with support by Napa Valley Vintners
- Director Norris – Napa Tree Forum has been postponed to a date in February or March 2013 TBA.

6. Agenda Planning

No items presented.

Next Regular Board Meeting: Monday, November 5, 2012, 2:00 p.m.

7. Adjournment

TONY NORRIS
PRESIDENT

ATTEST:

MELISSA GRAY
District Secretary

Key

Vote: HK = Harold Kelly; TN = Tony Norris; GK = Guy Kay; DF = David Finigan; MA = Myrna Abramowicz

The maker of the motion and second are reflected respectively in the order of the recorded vote.

Notations under vote: N = No; A = Abstain; X = Excused



Napa County Regional Park
and Open Space District

STAFF REPORT

Date: June 11, 2012
 Agenda Item: 4.B
 Subject: Consideration and potential authorization for the General Manager to send a letter to the Local Agency Formation Commission (LAFCO) regarding their municipal and sphere of influence review for the Lake Berryessa Estates Resort Improvement District (LBRID).

Recommendation

Authorize the General Manager to send a letter to LAFCO recommending Option 3 (no change) in regards to their municipal and sphere of influence review for LBRID

Background

LAFCO performs a municipal review of every public agency every five years, and as part of that review considers potential changes to the service area and sphere of influence for each agency. LAFCO is currently performing a review of LBRID.

As part of the LBRID review, LAFCO staff has developed three options: expand the sphere to be the same as the current LBRID authorized service area, encourage LBRID to reduce its service area to reflect the current sphere of influence, or take no action at this time.

Much of the area affected by this review is owned by the Napa County Regional Park and Open Space District. All of the lands donated by the Bob and Evalyn Trinchero with the exception of the Spanish Valley portion are within the existing service area jurisdiction of LBRID but outside of the sphere of influence.

All of the District lands in question are undeveloped except for an unimproved campground and a boat launch ramp, both of which are at present operated by the residents of Lake Berryessa Estates. District staff is in the process of developing land use plans for the affected property. Although not complete, at this time it appears highly unlikely that the District would ever want to connect to LBRID for water and/or sewer service. The Crystal Flats area, where the unimproved campground is located, is physically remote from LBRID facilities, meaning that even if service were desirable it would be prohibitively expensive to provide through LBRID. The Stone Corral area is physically close to LBRID facilities, but the current and likely future uses don't appear at this time to warrant the expense of installing and operating water and sewer service. By the time of the next scheduled review by LAFCO in five years, the District will have completed its planning process and will be in the position to definitely state whether LBRID service would in any way be desirable.

For these reasons, staff recommends sending a letter of LBRID indicating our preference for Option 3, which is no change at this time.



Local Agency Formation Commission of Napa County
Subdivision of the State of California

1030 Seminary Street, Suite B
Napa, California 94559
Telephone: (707) 259-8645
Facsimile: (707) 251-1053
www.napa.lafco.ca.gov

We Manage Local Government Boundaries, Evaluate Municipal Services, and Protect Agriculture

PUBLIC NOTICE

October 12, 2012

TO: Interested Parties
Affected Landowners/Residents

FROM: Keene Simonds, Executive Officer

SUBJECT: Notice of Public Review and Comment:
Sphere of Influence Update on Lake Berryessa Resort Improvement District

The Local Agency Formation Commission (LAFCO) of Napa County has issued a draft report on its scheduled sphere of influence update for the Lake Berryessa Resort Improvement District (LBRID); the governmental entity responsible for providing water and sewer services to the unincorporated community of Berryessa Estates. The update is required under State law and intended to verify, with or without changes, LBRID's sphere for purposes of demarking the area Commission believes represents the agency's appropriate and probable future jurisdiction and service area. All jurisdictional changes, such as annexations and detachments, must be consistent with the affected agency's sphere with limited exceptions. Further, while not effecting land use authority or landowner rights, spheres are the Legislature's version of urban growth boundaries and represent LAFCOs principal planning tool in fulfilling their mandate to facilitate orderly urban development and sustainable municipal services.

With the preceding context in mind, Napa LAFCO's draft report has been oriented to focus on one specific consideration: is it appropriate to expand LBRID's current sphere to include the District's entire jurisdictional boundary. This central consideration is drawn from Napa LAFCO's previous action to include only 10 percent of LBRID's jurisdictional boundary in establishing the sphere in 1985. The draft report, accordingly, evaluates the merits of adding this lone study category consisting of approximately 1,850 acres of remaining jurisdictional land to the sphere relative to current considerations (i.e., legislative directives, adopted policies, and commissioner preferences). The draft report further divides this lone study category into three distinct subareas labeled "A-1," "A-2," and "A-3" based on ownership factors and is depicted in the accompanying map. Markedly, the draft report ultimately concludes there is relatively equal merit in taking one of three actions with respect to updating LBRID's sphere, which are identified below with an expanded discussion provided in the draft report's Executive Summary.

Lewis Chilton, Chair
Councilmember, Town of Yountville

Joan Bennett, Commissioner
Councilmember, City of American Canyon

Juliana Inman, Alternate Commissioner
Councilmember, City of Napa

Brad Wagenknecht, Vice Chair
County of Napa Supervisor, 1st District

Bill Dodd, Commissioner
County of Napa Supervisor, 4th District

Mark Luce, Alternate Commissioner
County of Napa Supervisor, 2nd District

Brian J. Kelly, Commissioner
Representative of the General Public

Gregory Rodeno, Alternate Commissioner
Representative of the General Public

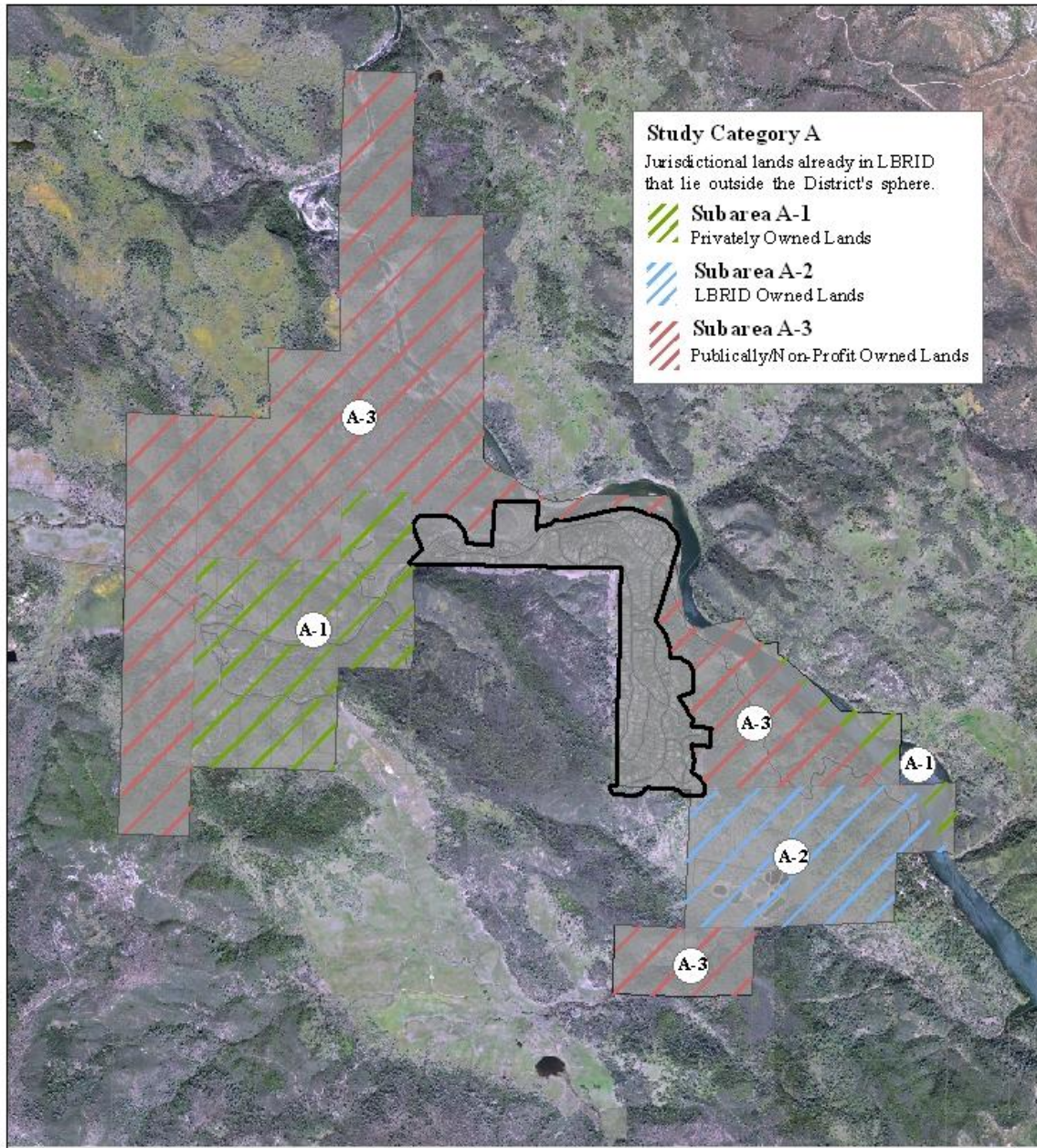
Keene Simonds
Executive Officer

- **Option One: Expand the Sphere to Match the Jurisdictional Boundary**
This option would be appropriate if it is the policy preference to assign overriding deference to the affected lands' existing social and economic ties with LBRID in choosing to add the subareas to the sphere.
- **Option Two: Retain Current Sphere and Pursue Detachment Alternatives**
This option would be appropriate if it is the policy preference to emphasize the affected lands' limited land use and service planning compatibilities with LBRID in choosing to continue to exclude the subareas from the sphere. This option would, notably, serve to reaffirm Napa LAFCO's previous policy statement the affected lands be detached and be memorialized by taking one or both of the following actions. The first alternative is for Napa LAFCO to formally request the LBRID Board take action to initiate a proposal to detach the subareas. The second alternative is for Napa LAFCO to direct staff to initiate a proposal to reorganize LBRID to establish a new community services district with a jurisdictional boundary that excludes the subareas.
- **Option Three: Retain Current Sphere and Table Considerations to Next Update**
This option would be appropriate if it is the policy preference to maintain the status quo and table all related policy considerations to the next scheduled update. This option would be appropriate if it is collectively determined more information is warranted with regards to future LBRID operations and community needs before taking any new action.

Electronic copies of the draft report are available for review by visiting Napa LAFCO's website at www.napa.lafco.ca.gov. Hard copies of the draft report are also available for review at Napa LAFCO's administrative office during normal business hours. Napa LAFCO invites any interested member of the public to submit written comments on the draft report through **Monday, November 12, 2012**. Written comments submitted by e-mail should be directed to Keene Simonds at ksimonds@napa.lafco.ca.gov. All written comment received by the deadline will be incorporated into a final report, which will be presented as part of a public hearing during Napa LAFCO's December 3, 2012 regular meeting. All interested parties are encouraged to attend the public hearing and provide verbal testimony.

If you have received this notice, you are either listed as a landowner in one or more of the three subareas comprising Study Category A or identified by staff as an interested party

LAKE BERRYESSA RESORT IMPROVEMENT DISTRICT Study Categories



Local Agency Formation Commission of Napa County
Political Subdivision of the State of California
We Manage Local Government Boundaries, Evaluate Municipal Services, and Protect Agriculture

BOUNDARIES
● LBRID Boundary
○ LBRID Sphere



DRAFT

Napa County Regional Park
and Open Space District

John Woodbury
General Manager

November 5, 2012

Napa County Local Agency Formation Commission
Attn: Keene Simonds
1700 Second Street, Ste 268
Napa, CA 94559

RE: Response to Municipal Service and Sphere of Influence Review for Lake Berryessa Estates
Resort Improvement District

The Napa County Regional Park and Open Space District Board of Directors has reviewed the report by the Local Agency Formation Commission (LAFCO) regarding the Lake Berryessa Estates Resort Improvement District (LBRID) sphere of influence, and recommends LAFCO adopt Option 3 (no change) at this time.

Our District owns most of the open space identified as area A-3 in the LAFCO report. Other than an unimproved campground and a simple boat launch ramp, there are no improvements on our property. The District is in the middle of a resource assessment of the property, and expect in 2013 to apply for a Use Permit for some level of public recreational use. At this time we don't anticipate any future uses of our property that would benefit from water or sewer service through LBRID; this question will be definitely answered once we complete our planning process.

Given these circumstances, we recommend that LAFCO adopt Option 3 (no change) at this time, and reevaluate the sphere of influence at the time of the next scheduled service review.

Sincerely,

John Woodbury
General Manager



Napa County Regional Park
and Open Space District

STAFF REPORT

Date: November 5, 2012
Item: 4.D
Subject: Receipt of report on expenditures, encumbrances, donations, and grants approved by District staff

Recommendation

Receive the report.

Background

Section III.A.(7) of the District By-laws authorizes the General Manager to bind the district for supplies, materials, labor, and other valuable consideration, in accordance with board policy and the adopted District budget, up to \$10,000 for non-construction purposes and up to \$25,000 for construction purposes, provided that all such expenditures are subsequently reported to the Board of Directors. Section III.A.(8) of the By-laws authorizes the General Manager to apply for grants and receive donations, subject to reporting such actions to the Board of Directors.

Attached is the printout of expenses for October 2012. The printout is more complex than usual because we recently restructured our system of accounts, and so had to do extensive journal entries to put expenditures in the correct new account. To make it easier to read, those lines which represent actual expenditures during the month are highlighted in yellow. Non-highlighted items are journal entries only for purposes of moving expenses to the correct account.

Program:

Journal Date	Journal ID	Journal Description	Voucher Desc	Reference	Vendor ID	Name	Debit	Credit	Balance
10/02/2012	0000233260	Parks Admin Allocation-50%		CT #7827			0.00	175,350.00	
Total For 48200 - Transfers-In							0.00	175,350.00	
							Beginning Balance:		0.00
							Total Activity:		-175,350.00
							Ending Balance:		-175,350.00
=====									
TOTAL REVENUE							0.00	175,350.00	-175,350.00
=====									
Account	52125	- Accounting/Auditing Services					0.00	0.00	
							Beginning Balance:		3,120.84
							Total Activity:		0.00
							Ending Balance:		3,120.84
=====									
Account	52490	- Other Professional Services					0.00	0.00	
10/25/2012	AP00234127	PARK070113 CJ YIP 9/12	9/12 SERVICES	00857757	23180	CJYIPASSOC	1,500.00	0.00	
Total For 52490 - Other Professional Services							1,500.00	0.00	
							Beginning Balance:		4,450.16
							Total Activity:		1,500.00
							Ending Balance:		5,950.16
=====									
Account	52700	- Insurance - Liability					0.00	0.00	
							Beginning Balance:		3,731.62
							Total Activity:		0.00
							Ending Balance:		3,731.62

GENERAL LEDGER DETAIL TRANSACTIONS
For Fiscal Year 2013
Period 4 to 4

Report ID: GLS7505
Bus. Unit: NAFPCO-Napa County GL Business Unit
Fund: 8500 N C Parks & Open Space Distr
Dept: 8500000 Parks Administration

Program:

Journal Date	Journal ID	Journal Description	Voucher Desc	Reference	Vendor ID	Name	Debit	Credit	Balance
Account	53100	- Office Supplies							
10/11/2012	AP00233636	Chino-volunteer tshirts		00856062			155.40	0.00	
Total For 53100		- Office Supplies					155.40	0.00	
							Beginning Balance:		738.12
							Total Activity:		155.40
							Ending Balance:		893.52

TOTAL EXPENSE
=====

1,655.40	0.00	13,696.14
----------	------	-----------

=====

TOTAL FOR PROGRAM 178,660.80 178,660.80 0.00

=====

Report ID: GLS7505
 Bus. Unit: NACO-Napa County GL Business Unit
 Fund: 8500 N C Parks & Open Space Distr
 Dept: 8501000 Moore Creek

GENERAL LEDGER DETAIL TRANSACTIONS
 For Fiscal Year 2013
 Period 4 to 4

Page No. 3
 Run Date 10/31/2012
 Run Time 08:40:24

Program:

Journal Date	Journal ID	Journal Description	Voucher Desc	Reference	Vendor ID	Name	Debit	Credit	Balance
TOTAL LIABILITY							16,306.02	16,306.02	5,332.76
Account	45300	- Rent - Building/Land							5,332.76
10/10/2012	AR00233569	October Rent					0.00	810.00	
10/11/2012	0000233561	RET CHK #5411, 31AUG12		JUAREZ			800.00	0.00	
10/26/2012	AR00234183	PG&E Reimbursement					0.00	193.64	
Total For 45300 - Rent - Building/Land							800.00	1,003.64	
							Beginning Balance:		-3,774.10
							Total Activity:		-203.64
							Ending Balance:		-3,977.74

Account	48200	- Transfers-In					0.00	56,500.00	
10/02/2012	0000233260	Moore Creek Allocation-50%		CT #7827					
Total For 48200 - Transfers-In							0.00	56,500.00	
							Beginning Balance:		0.00
							Total Activity:		-56,500.00
							Ending Balance:		-56,500.00

TOTAL REVENUE							800.00	57,503.64	-60,477.74
Account	52115	- Property Tax/Assessment Admin					435.94	0.00	
10/10/2012	0000233580	Property Tax Assessment		00849432					

Journal Date Journal ID Journal Description Voucher Desc Reference Vendor ID Name Debit Credit Balance

Total For 52115 - Property Tax/Assessment Admin
 435.94 0.00
 Beginning Balance: 0.00
 Total Activity: 435.94
 Ending Balance: 435.94

Account 52325 - Waste Disposal Services
 10/08/2012 AP00233457 United Site - 9/19/12-10/16/2012 Customer #CAN-000855699 20925 UNITEDSITE 142.32 0.00
 10/10/2012 0000233580 United Site-extra service 00846883 49.84 0.00
 10/10/2012 0000233580 United Site-extra service 00846885 49.84 0.00
 10/10/2012 0000233580 United Site-July 2012 00846891 142.32 0.00
 10/10/2012 0000233580 United Site-August 2012 00847702 142.32 0.00
 10/10/2012 0000233580 United Site 8/22/12-9/18/12 00851428 142.32 0.00

Total For 52325 - Waste Disposal Services
 668.96 0.00
 Beginning Balance: 0.00
 Total Activity: 668.96
 Ending Balance: 668.96

Account 52490 - Other Professional Services
 10/25/2012 AP00234127 PARK070113 CU YIP 9/12 9/12 SERVICES 00857757 23180 CJYIPASSOC 3,463.17 0.00

Total For 52490 - Other Professional Services
 3,463.17 0.00
 Beginning Balance: 5,593.24
 Total Activity: 3,463.17

GENERAL LEDGER DETAIL TRANSACTIONS
For Fiscal Year 2013
Period 4 to 4

Report ID: GLS7505
Bus. Unit: NAPCO-Napa County GL Business Unit
Fund: 8500 N C Parks & Open Space Distr
Dept: 8501000 Moore Creek

Program:

Journal Date	Journal ID	Journal Description	Voucher Desc	Reference	Vendor ID	Name	Debit	Credit	Balance
Account 52505 - Maintenance-Buildings/Improvem									
10/08/2012	AP00233457	PARK101213 DELTA 7/12	PROJ J117	00855666	26820	DELTACONSU	2,501.88	0.00	
10/10/2012	0000233580	Reclass to 52325		00846883			0.00	49.84	
10/10/2012	0000233580	Reclass to 52325		00846885			0.00	49.84	
10/10/2012	0000233580	Reclass to 52800		00846889			0.00	76.56	
10/10/2012	0000233580	Reclass to 52325		00846891			0.00	142.32	
10/10/2012	0000233580	Reclass to 52325		00847702			0.00	142.32	
10/10/2012	0000233580	Reclass to 52115		00849432			0.00	435.94	
10/10/2012	0000233580	Reclass to 52800		00849434			0.00	76.56	
10/10/2012	0000233580	Reclass to 52325		00851428			0.00	142.32	
10/10/2012	0000233580	Reclass to 52840		W12-00151			0.00	752.38	
10/10/2012	0000233580	Reclass to 52840		W11-00066			0.00	362.56	
10/10/2012	0000233580	Reclass to 53350		00851842			0.00	119.76	
10/10/2012	0000233580	Reclass to 53350		00851843			0.00	41.91	
10/10/2012	0000233580	Reclass to 53350		00851844			0.00	51.07	
10/10/2012	0000233580	Reclass to 53350		00851849			0.00	169.42	
10/10/2012	0000233580	Reclass to 52800		00853068			0.00	76.56	
Total For 52505 - Maintenance-Buildings/Improvem							2,501.88	2,689.36	
Beginning Balance:									10,764.29
Total Activity:									-187.48
Ending Balance:									10,576.81

Report ID: GLS7505
 Bus. Unit: NAPCO-Napa County GL Business Unit
 Fund: 8500 N C Parks & Open Space Distr
 Dept: 8501000 Moore Creek

GENERAL LEDGER DETAIL TRANSACTIONS
 For Fiscal Year 2013
 Period 4 to 4

Page No. 6
 Run Date 10/31/2012
 Run Time 08:40:24

Program:

Journal Date Journal ID Journal Description Voucher Desc Reference Vendor ID Name Debit Credit Balance

Account	52525	- Maintenance-Infrastructure/Lan						
	10/25/2012	AP00234127 PARK121113 BRENT HARRIS 9/129/12 VALENTINE 00857749 2275 BRENTHARRI			9,375.00	0.00		
Total For	52525	- Maintenance-Infrastructure/Lan			9,375.00	0.00		
					Beginning Balance:			0.00
					Total Activity:			9,375.00
					Ending Balance:			9,375.00

Account	52700	- Insurance - Liability			0.00	0.00		
					Beginning Balance:			733.00
					Total Activity:			0.00
					Ending Balance:			733.00

Account	52800	- Communications/Telephone						
	10/10/2012	0000233580 Hughes Net - July 00846889			76.56	0.00		
	10/10/2012	0000233580 Hughes Network 8/12-9/12 00849434			76.56	0.00		
	10/10/2012	0000233580 Hughes Net-9/12-10-10/12/12 00853068			76.56	0.00		
	10/29/2012	AP00234225 HughesNet - 10/12/12-11/12/12 #DSS883602 00858236 17372 HUGHESNETW			76.56	0.00		
Total For	52800	- Communications/Telephone			306.24	0.00		
					Beginning Balance:			0.00
					Total Activity:			306.24
					Ending Balance:			306.24

Account	52840	- Permits/License Fees						
---------	-------	------------------------	--	--	--	--	--	--

Program:

Journal Date	Journal ID	Journal Description	Voucher Desc	Reference	Vendor ID	Name	Debit	Credit	Balance
Account 52840	- Permits/License Fees								
10/03/2012	0000233309	Grading Permit #W12-00197					683.93	0.00	
10/10/2012	0000233580	Permit fees-hiking trail		W12-00151			752.38	0.00	
10/10/2012	0000233580	Moore Creek Grading permit		W11-00066			362.56	0.00	
10/10/2012	0000233580	EM Permit #E12-00480					1,148.19	0.00	
Total For 52840 - Permits/License Fees							2,947.06	0.00	
							Beginning Balance:		0.00
							Total Activity:		2,947.06
							Ending Balance:		2,947.06

Account 52905	- Business Travel/Mileage						0.00	0.00	
							Beginning Balance:		103.23
							Total Activity:		0.00
							Ending Balance:		103.23

Account 53205	- Utilities - Electric						117.00	0.00	
10/08/2012	AP00233457	PG&E - 8/23/12 to 9/24/12		Acct #009975924 00855692	945	PAC-GAS-00			
Total For 53205 - Utilities - Electric							117.00	0.00	
							Beginning Balance:		356.63
							Total Activity:		117.00
							Ending Balance:		473.63

Account 53345	- Construction Supplies/Material						0.00	1,148.19	
10/10/2012	0000233580	Reclass to 52840							

Program:

Journal Date	Journal ID	Journal Description	Voucher Desc	Reference	Vendor ID	Name	Debit	Credit	Balance
Total For 53345 - Construction Supplies/Material									
							0.00	1,148.19	
							Beginning Balance: 1,148.19		
							Total Activity: -1,148.19		
							Ending Balance: 0.00		
Account 53350 - Maintenance Supplies									
10/08/2012	AP00233457	Diamond Pool - Chlorine	Acct #55555555	00855695	25498	DIAMONDQUA	51.07	0.00	
10/08/2012	AP00233457	Diamond Pool - chemicals	Acct #55555555	00855696	25498	DIAMONDQUA	4.26	0.00	
10/10/2012	0000233580	Diamond Pool-chlorine		00851842			119.76	0.00	
10/10/2012	0000233580	Diamond Pool-powder bag		00851843			41.91	0.00	
10/10/2012	0000233580	Diamond Pool-chlorine		00851844			51.07	0.00	
10/10/2012	0000233580	Chino-locks,keys,chemicals		00851849			169.42	0.00	
10/11/2012	AP00233636	Chino-volunteer food & straw	Reimbursement	000856062	23180	CJYIPASSOC	477.78	0.00	
10/11/2012	AP00233636	Central Vly-straw wattle	Customer #NAPAC	000856171	219	CENTRALVAL	96.98	0.00	
Total For 53350 - Maintenance Supplies									
							1,012.25	0.00	
							Beginning Balance: 0.00		
							Total Activity: 1,012.25		
							Ending Balance: 1,012.25		

TOTAL EXPENSE									
							20,827.50	3,837.55	35,688.53
=====									
TOTAL FOR PROGRAM									
							95,437.16	95,437.16	0.00

GENERAL LEDGER DETAIL TRANSACTIONS
For Fiscal Year 2013
Period 4 to 4

Report ID: GLS7505
Bus. Unit: NAPCO-Napa County GL Business Unit
Fund: 8500 N C Parks & Open Space Distr
Dept: 8501002 Napa River and Bay Trail

Program:

Journal Date	Journal ID	Journal Description	Voucher Desc	Reference	Vendor ID	Name	Debit	Credit	Balance
Account	48200	- Transfers-In							
10/02/2012	0000233260	NRBT Allocation 50%		CT #7827			0.00	13,350.00	
Total For 48200		- Transfers-In					0.00	13,350.00	
							Beginning Balance:		0.00
							Total Activity:		-13,350.00
							Ending Balance:		-13,350.00
=====									
TOTAL REVENUE									
=====									
Account	52490	- Other Professional Services							
10/25/2012	AF00234127	PARK070113 CU YIP 9/12		9/12 SERVICES	00857757	23180	CJYIPASSOC	324.42	0.00
Total For 52490		- Other Professional Services					324.42	0.00	
							Beginning Balance:		801.06
							Total Activity:		324.42
							Ending Balance:		1,125.48
=====									
TOTAL EXPENSE									
=====									
TOTAL FOR PROGRA							13,998.84	13,998.84	0.00

Program:

Journal Date	Journal ID	Journal Description	Voucher Desc	Reference	Vendor ID	Name	Debit	Credit	Balance
=====									
TOTAL LIABILITY									
							2,669.70	2,669.70	14,993.50
=====									
Account	48200	- Transfers-In							
=====									
10/02/2012	0000233260	Camp Berryessa Allocation		CT #7827			0.00	17,875.00	
=====									
Total For 48200		- Transfers-In					0.00	17,875.00	
							Beginning Balance:		0.00
							Total Activity:		-17,875.00
							Ending Balance:		-17,875.00
=====									
TOTAL REVENUE									
=====									
Account	52490	- Other Professional Services							
=====									
10/25/2012	AP00234127	PARK111513 PSOMAS 8/12		PROJ# 6NAP0101000857755	33202	PSOMAS-001	2,604.00	0.00	
=====									
Total For 52490		- Other Professional Services					2,604.00	0.00	
							Beginning Balance:		7,139.50
							Total Activity:		2,604.00
							Ending Balance:		9,743.50
=====									
Account	52505	- Maintenance-Buildings/Improvem							
=====									
10/11/2012	AP00233636	Central Vly-straw, wheel setCustomer #NAPAC 00856164		219		CENTRALVAL	65.70	0.00	
=====									
Total For 52505		- Maintenance-Buildings/Improvem					65.70	0.00	

Program:

Journal Date	Journal ID	Journal Description	Voucher Desc	Reference	Vendor ID	Name	Debit	Credit	Balance
10/25/2012	21100	- Accounts Payable							
10/25/2012	AP00234130	Accounts Payable	9/12 SERVICES	00857757	23180	CUYIPASSOC	529.42	0.00	
10/29/2012	AP00234225	Accounts Payable	Customer #CAN-000858237	20925		UNITEDSITE	0.00	321.44	
10/30/2012	AP00234273	Accounts Payable	Customer #CAN-000858237	20925		UNITEDSITE	321.44	0.00	
Total For 21100 - Accounts Payable							2,012.38	2,012.38	
							Beginning Balance:		3,110.33
							Total Activity:		0.00
							Ending Balance:		3,110.33

Account	48200	- Transfers-In					Debit	Credit	Balance
TOTAL LIABILITY							2,012.38	2,012.38	3,110.33

10/02/2012	0000233260	NRER Allocation 50%					0.00	15,650.00	
Total For 48200 - Transfers-In							0.00	15,650.00	
							Beginning Balance:		0.00
							Total Activity:		-15,650.00
							Ending Balance:		-15,650.00

Account	52325	- Waste Disposal Services					Debit	Credit	Balance
TOTAL REVENUE							0.00	15,650.00	-15,650.00

10/08/2012	AP00233457	Upper Vly Disp - Sept 2012	Acct #01-48644	00855693	19694	UPPERVALLE	101.52	0.00	
10/16/2012	0000233777	United Site-July 2012		00846874			321.44	0.00	
10/16/2012	0000233777	United Site-Aug 2012		00846878			321.44	0.00	

Program:

Journal Date	Journal ID	Journal Description	Voucher Desc	Reference	Vendor ID	Name	Debit	Credit	Balance
Account 52325	- Waste Disposal Services								
10/16/2012	0000233777	Upper Vly Disp-July 2012		00848309			103.02	0.00	
10/16/2012	0000233777	United Site 8/16/12-9/12/12		00851426			321.44	0.00	
10/16/2012	0000233777	Upper Vly Disp-Aug 2012		00852688			103.00	0.00	
10/16/2012	0000233777	United Site 9/13/12-10/10/12		00854064			321.44	0.00	
10/29/2012	AP00234225	United Site 10/11/12 - 11/7/12 Customer #CAN-000858237		20925		UNITEDSITE	321.44	0.00	
Total For 52325 - Waste Disposal Services							1,914.74	0.00	
							Beginning Balance:		0.00
							Total Activity:		1,914.74
							Ending Balance:		1,914.74

Account 52490	- Other Professional Services								
10/25/2012	AP00234127	PARK070113 CJ YIP 9/12		00857757	23180	CJYIPASSOC	529.42	0.00	
Total For 52490 - Other Professional Services							529.42	0.00	
							Beginning Balance:		2,646.52
							Total Activity:		529.42
							Ending Balance:		3,175.94

Account 52505	- Maintenance-Buildings/Improvem								
10/16/2012	0000233777	Reclass to 52325		00846874			0.00	321.44	
10/16/2012	0000233777	Reclass to 52325		00846878			0.00	321.44	
10/16/2012	0000233777	Reclass to 52325		00848309			0.00	103.02	
10/16/2012	0000233777	Reclass to 52325		00851426			0.00	321.44	

Report ID: GLS7505
 Bus. Unit: NAFCO-Napa County GL Business Unit
 Fund: 8500 N C Parks & Open Space Distr
 Dept: 8501005 Napa River Ecological Reserve

GENERAL LEDGER DETAIL TRANSACTIONS
 For Fiscal Year 2013
 Period 4 to 4

Page No. 4
 Run Date 10/31/2012
 Run Time 08:46:32

Journal Date	Journal ID	Journal Description	Voucher Desc	Reference	Vendor ID	Name	Debit	Credit	Balance
10/16/2012	52505	- Maintenance-Buildings/Improvem		00852688			0.00	103.00	
10/16/2012	0000233777	Reclass to 52325		00854064			0.00	321.44	
10/25/2012	AF00234127	PARK081213 OPTIONS3 9/12		00857753	24404	OPTIONS3-0	1,060.00	0.00	
Total For 52505 - Maintenance-Buildings/Improvem							1,060.00	1,491.78	
Beginning Balance:									5,379.74
Total Activity:									-431.78
Ending Balance:									4,947.96
TOTAL EXPENSE							3,504.16	1,491.78	10,038.64
TOTAL FOR PROGRA							21,166.54	21,166.54	0.00

Report ID: GLS7505
 Bus. Unit: NAPCO-Napa County GL Business Unit
 Fund: 8500 N C Parks & Open Space Distr
 Dept: 8501007 Putah Creek

GENERAL LEDGER DETAIL TRANSACTIONS
 For Fiscal Year 2013
 Period 4 to 4

Page No. 2
 Run Date 10/31/2012
 Run Time 08:48:21

Program:

Journal Date	Journal ID	Journal Description	Voucher Desc	Reference	Vendor ID	Name	Debit	Credit	Balance
Beginning Balance: 0.00 Total Activity: -34,625.00 Ending Balance: -34,625.00									
=====									
TOTAL REVENUE									
=====									
Account	52490	- Other Professional Services					0.00	34,625.00	-34,625.00
=====									
10/25/2012	AP00234127	PARK070113 CJ YIP 9/12	9/12 SERVICES	00857757	23180	CJYIPASSOC	174.98	0.00	
=====									
Total For	52490	- Other Professional Services					174.98	0.00	1,635.59
=====									
Beginning Balance: 1,635.59									
Total Activity: 174.98									
Ending Balance: 1,810.57									
=====									
Account	53600	- Special Departmental Expense					0.00	0.00	
=====									
Beginning Balance: 21.79									
Total Activity: 0.00									
Ending Balance: 21.79									
=====									
TOTAL EXPENSE									
=====									
							174.98	0.00	1,832.36
=====									
TOTAL FOR PROGRAM							34,974.96	34,974.96	0.00
=====									

Report ID: GLS7505
 Bus. Unit: NAPCO-Napa County GL Business Unit
 Fund: 8500 N C Parks & Open Space Distr
 Dept: 8501008 State Parks

GENERAL LEDGER DETAIL TRANSACTIONS
 For Fiscal Year 2013
 Period 4 to 4

Page No. 10
 Run Date 10/31/2012
 Run Time 08:49:22

Journal Date Journal ID Journal Description Voucher Desc Reference Vendor ID Name Debit Credit Balance

Account	47500	- Donations and Contributions							
10/10/2012	AR00233569	Vinthers Dinner split	NVSPA			0.00	2,313.00		
Total For 47500		- Donations and Contributions				0.00	2,313.00		
						Beginning Balance:			-13,639.65
						Total Activity:			-2,313.00
						Ending Balance:			-15,952.65

Account	52100	- Administration Services							
TOTAL REVENUE						35.00	29,969.87		-222,724.02
Account	52100	- Administration Services				0.00	0.00		
						Beginning Balance:			10,400.00
						Total Activity:			0.00
						Ending Balance:			10,400.00

Account	52125	- Accounting/Auditing Services							
10/10/2012	0000233528	Int Aud Fees 1st Qtr FY 2013	STATE PARK			2,988.40	0.00		
Total For 52125		- Accounting/Auditing Services				2,988.40	0.00		
						Beginning Balance:			0.00
						Total Activity:			2,988.40
						Ending Balance:			2,988.40

Account	52325	- Waste Disposal Services							
10/08/2012	AF00233457	Upper Vly - Sept 2012	Acct #01-13452700855700	19694	UPPERVALLE	856.95	0.00		

GENERAL LEDGER DETAIL TRANSACTIONS
For Fiscal Year 2013
Period 4 to 4

Report ID: GLS7505
Bus. Unit: NAPCO-Napa County GL Business Unit
Fund: 8500 N C Parks & Open Space Distr
Dept: 8501008 State Parks

Journal Date Journal ID Journal Description Voucher Desc Reference Vendor ID Name Debit Credit Balance

Account	Journal ID	Journal Description	Voucher Desc	Reference	Vendor ID	Name	Debit	Credit	Balance
52325		- Waste Disposal Services							
10/26/2012	0000234174	Johnny-portable restroom					107.75	0.00	
10/26/2012	0000234174	Johnny-port restroom					51.95	0.00	
10/26/2012	0000234174	Upper Vly Disp-July 2012					909.24	0.00	
10/26/2012	0000234174	Upper Vly Disp-Aug 2012					856.95	0.00	
10/26/2012	0000234174	Upper Vly Disp-20 yd temp pull					691.53	0.00	
Total For 52325 - Waste Disposal Services							3,474.37	0.00	
Beginning Balance:									0.00
Total Activity:									3,474.37
Ending Balance:									3,474.37

Account	52490	- Other Professional Services							
10/26/2012	0000234174	Reclass to 53400					0.00	100.00	
10/29/2012	AP00234225	Valley Architects-copies/plans	the Yurts -	I 00858238	33071	VALLEYARCH	300.00	0.00	
Total For 52490 - Other Professional Services							300.00	100.00	
Beginning Balance:									2,296.25
Total Activity:									200.00
Ending Balance:									2,496.25

Account	52505	- Maintenance-Buildings/Improvem							
10/26/2012	0000234174	Reclass to 53350					0.00	21.00	
10/26/2012	0000234174	Reclass to 52325					0.00	107.75	
10/26/2012	0000234174	Reclass to 52325					0.00	51.95	

Report ID: GLS7505
 Bus. Unit: NAFCO-Napa County GL Business Unit
 Fund: 8500 N C Parks & Open Space Distr
 Dept: 8501008 State Parks

GENERAL LEDGER DETAIL TRANSACTIONS
 For Fiscal Year 2013
 Period 4 to 4

Page No. 12
 Run Date 10/31/2012
 Run Time 08:49:22

Program:

Journal Date	Journal ID	Journal Description	Voucher Desc	Reference	Vendor ID	Name	Debit	Credit	Balance
10/26/2012	0000234174	Maintenance-Buildings/Improvem					0.00	909.24	
10/26/2012	0000234174	Reclass to 52325							
10/26/2012	0000234174	Reclass to 53350					0.00	25.05	
10/26/2012	0000234174	Reclass to 53350					0.00	95.80	
10/26/2012	0000234174	Reclass to 52800					0.00	219.73	
10/26/2012	0000234174	Reclass to 53350					0.00	93.17	
10/26/2012	0000234174	Reclass to 53350					0.00	952.31	
10/26/2012	0000234174	Reclass to 53350					0.00	8.62	
10/26/2012	0000234174	Reclass to 53350					0.00	150.37	
10/26/2012	0000234174	Reclass to 53350					0.00	53.97	
10/26/2012	0000234174	Reclass to 53350					0.00	63.55	
10/26/2012	0000234174	Reclass to 53350					0.00	26.77	
10/26/2012	0000234174	Reclass to 53350					0.00	300.00	
10/26/2012	0000234174	Reclass to 53400					0.00	967.65	
10/26/2012	0000234174	Reclass to 52325					0.00	856.95	
10/26/2012	0000234174	Reclass to 53350					0.00	1,009.11	
10/26/2012	0000234174	Reclass to 52800					0.00	423.23	
10/26/2012	0000234174	Reclass to 53350					0.00	206.37	
10/26/2012	0000234174	Reclass to 52325					0.00	691.53	
10/26/2012	0000234174	Reclass to 52505					0.00	107.49	
Total For 52505 - Maintenance-Buildings/Improvem							0.00	7,341.61	

Beginning Balance: 18,366.80
 Total Activity: -7,341.61
 Ending Balance: 11,025.19

Report ID: GLS7505
 Bus. Unit: NAPCO-Napa County GL Business Unit
 Fund: 8500 N C Parks & Open Space Distr
 Dept: 8501008 State Parks

GENERAL LEDGER DETAIL TRANSACTIONS
 For Fiscal Year 2013
 Period 4 to 4

Page No. 13
 Run Date 10/31/2012
 Run Time 08:49:22

Program:

Journal Date Journal ID Journal Description Voucher Desc Reference Vendor ID Name Debit Credit Balance

Account	Journal ID	Journal Description	Voucher Desc	Reference	Vendor ID	Name	Debit	Credit	Balance
52800		- Communications/Telephone							
10/08/2012	AP00233457	AT&T - 8/13/12 to 9/12/12	Acct #707942457	00855698	949	ATT-002	142.73	0.00	
10/17/2012	AP00233870	Comcast - 10/10/12 to 11/9/12	Comcast #815530048	00857033	11443	COMCAST-00	107.49	0.00	
10/26/2012	0000234174	Comcast-July & Aug 2012					219.73	0.00	
10/26/2012	0000234174	AT&T - June-8/12/12					423.23	0.00	
10/26/2012	0000234174	Comcast - 9/10/12-10/9/12					107.49	0.00	
Total For 52800 - Communications/Telephone							1,000.67	0.00	
							Beginning Balance:		0.00
							Total Activity:		1,000.67
							Ending Balance:		1,000.67

Account	Journal ID	Journal Description	Voucher Desc	Reference	Vendor ID	Name	Debit	Credit	Balance
52905		- Business Travel/Mileage							
10/05/2012	AP00233425	L VOLKMAN 8/29 WRIGHT HOUSE	8/29 WRIGHT HOU	00855546	34062	VOLKMAN, LI	30.25	0.00	
10/05/2012	AP00233425	R GRASSI 8/22 WRIGHT HOUSE	8/22 WRIGHT HOU	00855548	34063	GRASSI, ROB	27.75	0.00	
10/11/2012	AP00233636	S. Jones - Chevron	S. Jones - Chev	00856066	33857	JONES, SAND	200.09	0.00	
Total For 52905 - Business Travel/Mileage							258.09	0.00	
							Beginning Balance:		605.15
							Total Activity:		258.09
							Ending Balance:		863.24

Account	Journal ID	Journal Description	Voucher Desc	Reference	Vendor ID	Name	Debit	Credit	Balance
53100		- Office Supplies							
10/29/2012	AP00234225	S. Jones-Bothe office supplies	Reimbursement S	00858240	33857	JONES, SAND	14.92	0.00	

GENERAL LEDGER DETAIL TRANSACTIONS
For Fiscal Year 2013
Period 4 to 4

Report ID: GLS7505
Bus. Unit: NAFCO-Napa County GL Business Unit
Fund: 8500 N C Parks & Open Space Distr
Dept: 8501008 State Parks

Program:

Journal Date Journal ID Journal Description Voucher Desc Reference Vendor ID Name Debit Credit Balance

Total For 53100 - Office Supplies
14.92 0.00
Beginning Balance: 507.78
Total Activity: 14.92
Ending Balance: 522.70

Account 53205 - Utilities - Electric
10/29/2012 AP00234225 PG&E-Res service 9/14-10/12 Acct #536007980 00858227 945 PAC-GAS-00 4.29 0.00
10/29/2012 AP00234225 PG&E Res serv 9/14/12-10/12/A&ct #483140695 00858229 945 PAC-GAS-00 116.45 0.00
10/29/2012 AP00234225 PG&E - campfire, outdoor Acct #676540311 00858233 945 PAC-GAS-00 34.10 0.00
10/29/2012 AP00234225 PG&E - Rec Hall 9/13/12-10/12 Acct #217283182 00858234 945 PAC-GAS-00 59.87 0.00

Total For 53205 - Utilities - Electric
214.71 0.00
Beginning Balance: 3,314.89
Total Activity: 214.71
Ending Balance: 3,529.60

Account 53250 - Fuel
10/29/2012 AP00234225 PG&E-Office, camp group, pool Acct #186901249 00858231 945 PAC-GAS-00 704.77 0.00
Total For 53250 - Fuel
704.77 0.00
Beginning Balance: 0.00
Total Activity: 704.77
Ending Balance: 704.77

Account 53350 - Maintenance Supplies

Journal Date	Journal ID	Journal Description	Voucher Desc	Reference	Vendor ID	Name	Debit	Credit	Balance
Account	53350	- Maintenance Supplies							
10/11/2012	AP00233636	S. Jones - locks & keys	Reimbursement	f 00856064	33857	JONES, SAND	43.79	0.00	
10/11/2012	AP00233636	Steves Hardware-latch & pullAcct #31248		00856068	1222	STEVESHARD	14.62	0.00	
10/11/2012	AP00233636	Steves hardware-nuts & boltsAcct #31248		00856070	1222	STEVESHARD	48.41	0.00	
10/11/2012	AP00233636	Steves hardware-screws, plugAcct #31248		00856072	1222	STEVESHARD	33.86	0.00	
10/11/2012	AP00233636	Steves hardware- wrench Acct #31248		00856073	1222	STEVESHARD	36.61	0.00	
10/11/2012	AP00233636	Steves hardware-plier grooveAcct #31248		00856076	1222	STEVESHARD	36.54	0.00	
10/11/2012	AP00233636	Steves hardware-battery, raAcct #31248		00856077	1222	STEVESHARD	450.20	0.00	
10/11/2012	AP00233636	Steves hardware-wrench Acct #31248		00856079	1222	STEVESHARD	32.31	0.00	
10/11/2012	AP00233636	Steves hardware-switch Acct #31248		00856082	1222	STEVESHARD	7.49	0.00	
10/11/2012	AP00233636	Steves hardware-press gauge Acct #31248		00856084	1222	STEVESHARD	22.61	0.00	
10/11/2012	AP00233636	Central Vly - recep, lock, eCustomer #NAPAC00856115		219		CENTRALVAL	97.44	0.00	
10/11/2012	AP00233636	Central Vly - nails, etc Customer #NAPAC00856119		219		CENTRALVAL	18.60	0.00	
10/11/2012	AP00233636	Central Vly-alum flex, glazingCustomer #NAPAC00856123		219		CENTRALVAL	14.07	0.00	
10/11/2012	AP00233636	Central Vly-respirator (2) Customer #NAPAC00856126		219		CENTRALVAL	50.62	0.00	
10/11/2012	AP00233636	Central Valley-kohler lite Customer #NAPAC00856131		219		CENTRALVAL	32.83	0.00	
10/11/2012	AP00233636	Central Valley-recep gfci Customer #NAPAC00856134		219		CENTRALVAL	61.39	0.00	
10/11/2012	AP00233636	Central Vly-wood patch Customer #NAPAC00856138		219		CENTRALVAL	14.31	0.00	
10/11/2012	AP00233636	Central Valley - supplies Customer #NAPAC00856141		219		CENTRALVAL	320.19	0.00	
10/11/2012	AP00233636	Central Vly-gdf press Customer #NAPAC00856145		219		CENTRALVAL	78.03	0.00	
10/11/2012	AP00233636	Central Vly - supplies Customer #NAPAC00856147		219		CENTRALVAL	84.69	0.00	
10/11/2012	AP00233636	Central Vly-paint tray,brushCustomer #NAPAC00856148		219		CENTRALVAL	2.56	0.00	
10/11/2012	AP00233636	Central Vly-chlor tabs,couplCustomer #NAPAC00856152		219		CENTRALVAL	57.62	0.00	

GENERAL LEDGER DETAIL TRANSACTIONS
For Fiscal Year 2013
Period 4 to 4

Report ID: GLS7505
Bus. Unit: NAPCO-Napa County GL Business Unit
Fund: 8500 N C Parks & Open Space Distr
Dept: 8501008 State Parks

Program:

Journal Date	Journal ID	Journal Description	Voucher Desc	Reference	Vendor ID	Name	Debit	Credit	Balance
Account	53350	- Maintenance Supplies							
10/11/2012	AP00233636	Central Vly - supplies	Customer #NAPAC	00856155	219	CENTRALVAL	126.69	0.00	
10/11/2012	AP00233636	Central Vly-concrete mix	Customer #NAPAC	00856156	219	CENTRALVAL	23.86	0.00	
10/11/2012	AP00233636	Central Vly-torch blade	Customer #NAPAC	00856158	219	CENTRALVAL	31.23	0.00	
10/11/2012	AP00233636	Central Vly-pilot drill	Customer #NAPAC	00856160	219	CENTRALVAL	3.11	0.00	
10/11/2012	AP00233636	Central Vly - o rings, washr	Customer #NAPAC	00856161	219	CENTRALVAL	4.31	0.00	
10/11/2012	AP00233636	Central Vly-wye soc	Customer #NAPAC	00856166	219	CENTRALVAL	26.95	0.00	
10/11/2012	AP00233636	Central Vly-rooter, bolts, e	Customer #NAPAC	00856168	219	CENTRALVAL	51.68	0.00	
10/11/2012	AP00233636	Central Vly - finance charge	Customer #NAPAC	00856177	219	CENTRALVAL	12.17	0.00	
10/17/2012	AP00233870	Brown's Auto parts - supplie	Customer #NAPAC	00856177	219	CENTRALVAL	195.82	0.00	
10/26/2012	0000234174	C. Cahill-concrete (Bothe)	Customer #NAPAC	00856177	219	BROWNSAUTO			
10/26/2012	0000234174	S. Jones-sand reimbursement	Customer #NAPAC	00856177	219	BROWNSAUTO	21.00	0.00	
10/26/2012	0000234174	Steve Hardware-Aug 2012	Customer #NAPAC	00856177	219	BROWNSAUTO	25.05	0.00	
10/26/2012	0000234174	Steve Hardware-Aug 2012	Customer #NAPAC	00856177	219	BROWNSAUTO	95.80	0.00	
10/26/2012	0000234174	S. Jones-hose & tip kit	Customer #NAPAC	00856177	219	BROWNSAUTO	93.17	0.00	
10/26/2012	0000234174	Central Vly-August 2012	Customer #NAPAC	00856177	219	BROWNSAUTO	952.31	0.00	
10/26/2012	0000234174	Face Supply	Customer #NAPAC	00856177	219	BROWNSAUTO	8.62	0.00	
10/26/2012	0000234174	Diamond Wtr-Chlorine & brush	Customer #NAPAC	00856177	219	BROWNSAUTO	150.37	0.00	
10/26/2012	0000234174	Steve Hardware-Sept 2012	Customer #NAPAC	00856177	219	BROWNSAUTO	53.97	0.00	
10/26/2012	0000234174	Paint Works	Customer #NAPAC	00856177	219	BROWNSAUTO	63.55	0.00	
10/26/2012	0000234174	Browns Auto-air hose repair	Customer #NAPAC	00856177	219	BROWNSAUTO	26.77	0.00	
10/26/2012	0000234174	J. Woodbury-window glass	Customer #NAPAC	00856177	219	BROWNSAUTO	300.00	0.00	
10/26/2012	0000234174	Central Vly-Sept 2012	Customer #NAPAC	00856177	219	BROWNSAUTO	1,009.11	0.00	
10/26/2012	0000234174	Rainbow Ag - Sept 2012	Customer #NAPAC	00856177	219	BROWNSAUTO	206.37	0.00	
10/29/2012	AP00234225	S. Jones - sander, sandpaper	Customer #NAPAC	00856177	219	BROWNSAUTO	197.62	0.00	

Program:

Journal Date	Journal ID	Journal Description	Voucher Desc	Reference	Vendor ID	Name	Debit	Credit	Balance
Total For	53350	- Maintenance Supplies					5,238.32	0.00	
							Beginning Balance:		0.00
							Total Activity:		5,238.32
							Ending Balance:		5,238.32

Account	Journal Date	Journal ID	Journal Description	Voucher Desc	Reference	Vendor ID	Name	Debit	Credit	Balance
53400			- Minor Equipment/Small Tools							
	10/17/2012	AP00233870	Rainbow - chain saw parts	Customer #45463	00857026	11400	RAINBOWAGR	135.22	0.00	
	10/17/2012	AP00233870	Rainbow Ag - parts	Customer #45463	00857027	11400	RAINBOWAGR	22.02	0.00	
	10/26/2012	0000234174	S. Jones-truck deposit					100.00	0.00	
	10/26/2012	0000234174	Fluid Manuf - parts					967.65	0.00	
	10/26/2012	0000234174	S. Jones- tools(jacks)					285.00	0.00	
	10/26/2012	0000234174	J. Woodbury - Truck (Bothe)					2,900.00	0.00	
Total For	53400	- Minor Equipment/Small Tools						4,409.89	0.00	
								Beginning Balance:		0.00
								Total Activity:		4,409.89
								Ending Balance:		4,409.89

Account	Journal Date	Journal ID	Journal Description	Voucher Desc	Reference	Vendor ID	Name	Debit	Credit	Balance
57100			- Special Items							
	10/26/2012	0000234174	Reclass to 53400					0.00	285.00	
	10/26/2012	0000234174	Reclass to 53400					0.00	2,900.00	
Total For	57100	- Special Items						0.00	3,185.00	
								Beginning Balance:		3,185.00
								Total Activity:		-3,185.00

Report ID: GLS7505
 Bus. Unit: NAPCO-Napa County GL Business Unit
 Fund: 8500 N C Parks & Open Space Distr
 Dept: 8501008 State Parks

GENERAL LEDGER DETAIL TRANSACTIONS
 For Fiscal Year 2013
 Period 4 to 4

Page No. 18
 Run Date 10/31/2012
 Run Time 08:49:22

Program:

Journal Date	Journal ID	Journal Description	Voucher Desc	Reference	Vendor ID	Name	Debit	Credit	Balance
Ending Balance:									
							18,604.14	10,626.61	46,653.40
TOTAL EXPENSE									
TOTAL FOR PROGRAM							53,598.14	53,598.14	0.00

Plan of Projects Status Report

November 5, 2012

<u>Name of Project</u>	<u>Description</u>	<u>Status</u>
Bay Area Ridge Trail Realignment	Amendment to the proposed alignment of the Bay Area Ridge Trail extend north to the Oat Hill Mine Trail	District staff presented Ridge Trail staff with a final draft analysis of potential Go North alignments through Napa County in late August, 2012. <u>The Ridge Trail Board gave preliminary approval to the revised alignment in October subject to one more round of discussion regarding the best route crossing between Napa and Sonoma counties.</u>
Bay Area Ridge Trail Tuteur Loop	Assignment of Tuteur Loop Ridge Trail easement from the Bay Area Ridge Trail to the District	The Bay Area Ridge Trail Council obtained a donated easement from the Tuteur family and constructed a section of Bay Area Ridge Trail adjacent to Skyline Park. The Council wishes to transfer this easement to the District. Staff for the District and Council have gathered all the relevant documents, and initiated discussion with the Tuteur family to determine if there are any issues or amendments that should be considered. Next steps are to complete legal review of the documents, make amendments if warranted, obtain the consent of the Coastal Conservancy (who funded the trail construction), and then execute the assignment. Completing transfer of the easement has been temporarily put on hold until staff workload eases.
Bay/River Trail -- American Canyon to Napa	An 8+ mile recreational trail between the cities of American Canyon and Napa generally following the Napa River and interior levees of associated wetlands.	
	Phase Two--Green Island Road to Soscol Ferry Road	Questa has completed a revised the draft PUC permit application for a public crossing of the SMART tracks. SMART, NRCA and the PUC have verbally agreed to allow the railroad crossing; formal concurrence is now being sought. District staff is continuing to work with SMART to get their formal approval. LSA Associates has completed a biological survey for the Fagan Marsh area; based on the results, DFG has indicated they do not want the trail alignment to follow the levee on the north side of Fagan Marsh; District staff is now reviewing the feasibility of an alternative alignment. DFG, the Bay Trail Project and the Coastal Conservancy are funding the preparation of the supplemental environmental analysis for the section of the trail next to DFG's ponds 9 and 10; this work is being handled by Ducks Unlimited on behalf of DFG. District staff met with the involved parties on May 25, 2011 and again on November 9, 2011 to resolve questions, and is continuing to meet to address questions about the scope of additional CEQA review. DU has completed their draft review, including cost estimates. District staff together with Napa Sanitation District staff toured two other water treatment facilities that have segments of the Bay Trail going through or past their facilities. <u>Staff is waiting for DFG and DU to complete the supplemental environmental analysis for the trail adjacent to Ponds 9 and 10. BCDC is considering alternatives for getting DFG to perform and provide trail access as required by their permit with BCDC.</u>
	Phase Three--Soscol Ferry Road to Napa Pipe	All permits and permissions have been obtained, and construction bid documents are done. Caltrans has determined the project is eligible for federal Transportation Enhancements grant funds, and has approved NEPA review for the project. Staff is now completing Caltrans' extensive paperwork needed to obtain the funds. The goal was to construct the project May-June 2012, but Caltrans approval was not ready in time, so the funding commitment has lapsed. <u>Replacement funding may be available starting June 2013.</u>
Berryessa Estates	Acquire 480 acres next to Berryessa Estates from BLM at no fee through their Recreation and Public Purpose Act procedure. Would serve as a wilderness park for local residents eventually be the northern trailhead for a trail between Berryessa Estates and Pope Canyon.	The District in 2009 applied to BLM for a no-fee transfer of this property to the District for the no-fee transfer of this property; while this transfer has received conceptual approval by BLM staff, the formal approval has dragged; several meetings have been held over the past three years to try and speed to process, but BLM staff has so far had higher priorities. CDF crews did extensive fire break work in 2009 through 2011 to protect the residences next to the BLM land. CDF and the Pope Valley Volunteer Fire Department have added a proposal to construct a fire substation on a corner of the property. A community meeting was held March 2009 to get input from the community. The District has completed the donation to the District of a small, 0.2 acre property that provides critical access to the northeast corner of the property. The District has allowed excess soil from a nearby public project to be disposed of on this property, which saves them money and facilitates the eventual construction of the fire substation; staff is working on a drainage easement to the County to assure the County takes care of the extension of the storm drain under this new fill. <u>District staff was recently contacted by the Calfire Battalion Chief for the area, who is extremely interested pushing the substation forward. We hope to reinstate active talks between Calfire, BLM, and the District in coming months.</u>
Berryessa Vista	Planning and stewardship of this 224 acre wilderness park.	Volunteers working with the District have completed detailed GIS mapping showing all existing roads, creek crossings, vista points and potential campsites. Continuing damage by off-road vehicles trespassing on the property was noted. The District sent a letter was sent to all property owners in that area introducing the District, explaining the deed restriction prohibiting off road vehicles, and asking for their cooperation. Since then there has been less observed damage, although the problem is not resolved. <u>After observing more OHV damage in the fall of 2012, staff is preparing to install a gate to block OHV access.</u> No other work is anticipated until Lake Berryessa Trail planning is completed, as that is a key step in gaining overland access to the property. District staff has been meeting with Reclamation, their consultants and interested parties on the trail planning and prioritization.
Blue Ridge/Berryessa Peak Trail	Obtain right of way and construct trail to provide public access to extensive federal lands on Blue Ridge and to Berryessa Peak	Obtained donated trail easement from the Ahmann family to close gaps between existing public lands on Blue Ridge. A Negative Declaration and Use Permit hearing was approved December 16, 2009 by the County Planning Commission. An Operations and Management Plan has been approved by the property owner and the District. There have been volunteer trail building work parties have been held numerous times between 2011 and the present. BLM staff on April 11th inspected the proposed trail alignment where it crosses BLM land. District and BLM staff met on August 5, 2011 to discuss BLM review of this project. BLM's biologist inspected the alignment on September 17, 2011. District staff met with Fish and Game on June 15, 2012 to discuss signage at the trailhead on DFG property, and is now preparing proposed signage language for DFG review.

<p>Camp Berryessa Redevelopment of former Boy Scout Camp into a group/environmental education camp.</p>	<p>CEQA and NEPA review is complete, as is the Use Agreement between the District and Reclamation. A grant for \$50,000 to help with construction has been provided by the Mead Foundation, together with a \$1.5 million grant from the State Coastal Conservancy. The contract for preparation of plans and specifications with Psomas was approved by the Board at its October meeting, and Psomas has now completed the 60% drawings, <u>which are being reviewed by District and Reclamation staff.</u> A meeting of potential future users was held September 22, 2011. The District has contracted for labor compliance monitoring for the construction work. Efforts to reuse the existing well proved unsuccessful, though water quality tests did demonstrate the groundwater in the area is of acceptable quality. <u>A new water well was dug in October 2012-- production is great, and quality appears acceptable, pending completion of full water quality tests.</u> The camp will likely open in the fall of 2013.</p>
<p>District Non-profit Foundation Organize a non-profit foundation to raise funds for District projects</p>	<p>The District Board has approved the goals, objectives and basic structure for a non-profit foundation to assist the District with fundraising. Formation of the foundation will likely be timed to the opening of Camp Berryessa.</p>
<p>Lake Hennessey North Shore Trails Would open up several miles of existing dirt access road, and construct approximately 1 mile of new single track trail, into a loop trail system on the north side of Lake Hennessey, and connecting to the planned Moore Creek Open Space Park trail system</p>	<p>In November, 2009 the Napa City Council directed city staff to work with the District to finalize an agreement for the proposed Hennessey trails. A plant survey of the new section of trail was completed on April 3, 2010. The District approved a Mitigated Negative Declaration on February 14, 2011. A final lease agreement and operations plan was approved by the District Board in August 2012, and by the City Council in September 2012. Trail work is expected to begin in the Spring/Summer of 2013 and public trail access is slated to be available come Fall of 2013.</p>
<p>Moore Creek Open Space Park Development Development of open space park on 673 acres acquired by the District adjacent to City of Napa watershed lands at Lake Hennessey to protect habitat, provide recreational trails, and overnight camping facilities.</p>	<p>All discretionary permits have been obtained, and park improvements are underway. The County road department completed paving of the entryway driveway in November 2011. The design of the new septic system for the ranch house has been approved by the Regional Water Quality Control Board and the County. The eastern boundary survey is complete except for a small amount of flagging; a partial payment to the surveyor has been worked out, since he cannot finish flagging until brush clearance work is completed. Monthly volunteer work parties have performed numerous tasks on the property, including trail repair and construction, fence building, restoration planting, and removal of invasive french broom. In 2012, the ranch house was used by VOCAL for a crew leader training in March, and a Land Trust first aide training in February. <u>Construction of the South Segment of the Valentine Trail has been completed. Staging area fill and compaction is complete except for finish grading and application of gravel.</u> Delays in the processing of building permits for the trailhead restrooms and a lack of staff time to quickly put together a bid package for the alternative septic treatment system have pushed the expected public opening back to Spring 2013.</p>
<p>Napa River Ecological Reserve Restoration Remove invasive plants and restore native vegetation in the entryway meadow, replace damaged signage and information panels, and if feasible install a seasonal bridge</p>	<p>The CCC did mechanical and chemical weed removal and installed an all-weather surface on the trail from the parking area to the river levee, in May and June 2010. Additional invasive weed removal, mapping, and cleanup was done by volunteers on numerous occasions in 2010, 2011 and 2012. The District has used grant funding to bring several thousand students to the site to study ecology of the area and assist with the habitat restoration. Additional weed removal has been done by a private contractor under contract to the District. Staff met with invasive plant control specialists in June 2011 to evaluate eradication efforts to date and plan next steps. Native plant cuttings gathered from the reserve were propagated and planted by volunteers in Dec 2011 and Jan 2012. Supplemental grant funding for the restoration work was awarded by the County Wildlife Commission in 2011. Both the Coastal Conservancy grant and the Wildlife Commission grant the District received to pay for restoration work have had their deadlines extended until March and June of 2013. This time extension will allow us to continue invasive weed removal. DFG in 2011 agreed to a simplified approval process for field trips. District staff met with DFG on December 8, 2011 to agree on work plans for 2012.</p>
<p>Oat Hill Mine Trail Improvements to first 1/2 mile of trail next to Calistoga</p>	<p>The litigation holding up this project has been successfully concluded, meaning the District can now complete repairs to the first 1/2 mile of the trail. Because of the cash flow needs of the Napa River and Bay Trail project, completion of the work on the Oat Hill Mine will be delayed until summer of 2012. Several of the trail sign posts have been vandalized and will need to be replaced. The District is continuing to work with Tuleyome on a project to clean up the Twin Peaks and Corona Mines, in the hopes this may enable the District to safely open the northern Oat Hill Mine Trail for public use. District staff has installed new signage disuading hikers from trespassing on neighboring properties as well as signs indicating that the Trail is temporarily closed during hunting season.</p>
<p>Oat Hill Mine Trail Transfer of 40 acre parcel from BLM</p>	<p>The District in 2008 applied to BLM for a non-fee transfer to the District of a 40 acre parcel at Maple Springs on the Oat Hill Mine Trail; this application is pending. Staff met with BLM in February 2011 to discuss how to speed up this transfer; another meeting with the same topic was held August 5, 2011. The District is still waiting on BLM to process the application.</p>
<p>Rector Ridge/Stags Leap Ridge Trail Construction of staging area and 6+ miles of Ridge Trail climbing east from Silverado Trail near Rector Creek.</p>	<p>CEQA on this project was completed several years ago--staff has prepared a draft update to the Negative Declaration due to the passage of time since the original approval. The project concept has been approved by the District Board, and was positively viewed by the Veterans Home administration. However, Veterans Home staff had been having difficulty figuring out what approval process is needed, because of ongoing discussions at the state level about the appropriate roles and future programs for the Veterans Home, and then key management staff at the Veterans Home retired in November 2010, so progress was delayed pending the filling of their vacant positions. The District will restart the process when other project priorities are under control.</p>
<p>River to Ridge Trail Lot line adjustment to legalize River to Ridge Trail as constructed (it currently encroaches on private property in two locations)</p>	<p>Deeds accomplishing the adjustment in property boundaries between Syar and the State have been recorded. If the County ends up not being able to purchase Skyline Park, including the area with the River to Ridge Trail, then the County and the state will need to record a new trail alignment easement description.</p>

Skyline Park Protection Purchase of Skyline Park from the State	Three past legislative efforts to authorize sale to the County failed due to unrelated disagreements between the state legislature and administration. Separately, the County in September 2009 approved a new park overlay zone and an updated Master Plan for Skyline Park. A fourth legislative effort by Assemblymember Evans in 2010, sponsored by Napa County and supported by the District, was approved by the legislature and signed by the Governor. The County and state General Services have agreed on an appraisal process for determining the fair market value purchase price. The County has retained an appraiser acceptable to the State, and a draft appraisal is now being reviewed by the County and the State. In late April 2012 the state indicated they were rescinding their offer to sell the park even at the unencumbered estimated value, and were going to prepare their own appraisal. Acquisition efforts are on hold until the State completes its revised appraisal.
Spanish Valley, Crystal Flats, and Stone Corral Planning for 3,400 acres of open space donated by Bob and Evalyn Trinchero	Staff met with key community leaders from Lake Berryessa Estates on February 6 and March 6, 2011. A public session was held April 21st at the Pope Valley Farm Center. The District has negotiated an easement across the District's Stone Corral property to resolve one of the clouds on the title to this land; this easement was approved by the Board at its October meeting, and has now been finalized and recorded. The District took full possession of the properties on January 1, 2012. Staff met with the LBEPOA Board on November 13th and again on December 4, 2011 to discuss use of the Crystal Flats and Stone Corral areas. District staff has prepared a draft agreement between the District and the Association, which the Association is now reviewing. A formal Association response is expected <u>any day</u> , following a series of community meetings which they are holding to canvas their membership. The District is working with a well driller to make the existing well in Spanish Valley functional. The District has contracted for botanical and bird surveys over the course of 2012. Staff completed a preliminary survey of the Spanish Valley access road in late July and, while legal access to the property has been established, it does not appear that the existing road is located within the Spanish Valley Trail easement. This will require discussions with the adjacent property owner, which may further delay our timeline for opening Spanish Valley to public use.
State Parks Operate Bothe-Napa Valley State Park and the Bale Grist Mill State Historic Park	The District, with assistance from the Napa Valley State Parks Association took over management of the parks on April 1, 2012. The Park Manager and Assistant Manager have been hired, a part-time community outreach professional is under contract, and seasonal park aides have been hired. Camp hosts are in place. A County permit for the pool was obtained in July and the pool was reopened immediately thereafter. <u>The state has completed installing 3 yurts</u> , and the District begun site prep in anticipation of installing an additional 7 yurts. State Fire Marshall permit approval is still being sought for the other 7 yurts. Numerous volunteer projects have been organized (PG&E event improving the Mill, firewood splitting, hazardous tree removal, mowing, pool cleaning, native plant garden maintenance, historic orchard restoration, lots of trash removal, and in September/October a footbridge on the History Trail was repaired. A volunteer forestry management group has been formed and the District has acquired a boom truck and other equipment in support of their mission. Utility service accounts have been transferred from the state to the District. Work on an improved recycling system is nearly complete. Every septic tank in the park has been pumped clean, and sewer lines were located and cleared of root blockages. Two broken gas lines were fixed. Nearly \$270,000 in gifts, grants and pledges have been obtained to assist with improvements at the parks.
Vallejo Lakes Possible purchase of 1100 acres of surplus Vallejo Water District lands, of which 200 acres are located in Napa County	Discussions between the District, the Land Trust of Napa County, the County of Solano and the Solano Land Trust indicate a common desire to work together to purchase this property adjacent to Skyline Park. The City Council of the City of Vallejo has officially authorized staff to pursue surplusing of the property. The City of Vallejo has hired an appraiser to prepare an estimate of the property's fair market value, but this has not yet been released. District staff met with Solano Land Trust staff on September 7, 2011 to discuss project status and next steps. The District GM, together with the County of Solano EO, in February 2012 each sent letters to the City of Vallejo expressing interest in the property and requesting notification per state law of any planned surplusing of the property. The District's analysis of County ROW's with potential for recreational trails identified a potential ROW through the Vallejo Lakes property; however, it appears that one short section of the historic ROW is in Solano County and appears to not have been properly established.
Vine Trail A Class I bicycle/pedestrian path extending from Calistoga to the Vallejo Ferry Terminal sponsored by the Vine Trail Coalition, of which the District is a participating member.	The District has entered into an MOU with the Vine Trail Coalition to provide assistance as requested by the Coalition in receiving funds, preparing plans and environmental documents, constructing and operating the trail. The District, the Bay Area Ridge Trail, the San Francisco Bay Trail and the Vine Trail Coalition have prepared a joint Case Statement for the combined trail network for fundraising purposes. The District on February 5, 2010 submitted an appropriations request for FY 2011 to Senator Feinstein, and a similar request to Congressman Thompson on February 26, 2010 on behalf of the Vine Trail Coalition. Approximately \$135,000 in federal Transportation Enhancements funding was available to construct the section of the trail under the Butler Bridge, but the District was not able to process the paperwork through Caltrans in time to use these funds. These funds may become available again in July of 2013.

Completed Projects

<p>Bay/River Trail -- American Canyon to Napa Phase I Phase One--Euclptus Drive to Green Island Road</p>	<p>Construction of approximately 5 miles of Class I bicycle and pedestrian path in the vicinity of American Canyon along the Napa River was completed in April 2012, in partnership with the City of American Canyon, Department of Fish and Game and Napa Vallejo Waste Management Authority. A formal opening ceremony was held June 2, 2012.</p>
<p>Berryessa Vista Acquisition</p>	<p>Purchase of 224 acres from the Land Trust of Napa County for use as a public park completed in early 2008 using State Prop 12 funds.</p>
<p>Connolly Ranch</p>	<p>Construction of patio, restrooms and cooking facilities completed in 2008 using State Prop 12 funds.</p>
<p>Oat Hill Mine Trail</p>	<p>The Oat Hill Mine Trail was formally opened in May of 2008, after a major volunteer work party doing signage installation, brush removal and erosion control.</p>
<p>Historic ROW Analysis</p>	<p>Staff has completed a comprehensive review of historic rights-of-way, and is now focusing attention on those which have greatest potential.</p>
<p>Linda Falls</p>	<p>Study to determine location and status of historic road Rights-of-Way and whether they have value as non-motorized recreational trails</p>
<p>Linda Falls</p>	<p>Conservation easement accepted in spring 2008 from Land Trust of Napa County to provide additional protection for this 39 acre property, which is owned by the land trust</p>
<p>Master Plan Development</p>	<p>The Master Plan for 2008-2013 was approved in January 2009</p>
<p>Master Plan Update</p>	<p>Board adhoc committee appointed. Methodology for doing update has been agreed upon. Project was delayed due to competing demands on staff time (primarily the effort to keep Napa's state parks from closing. A draft update has been prepared by staff working with the Board ad hoc committee for the Master Plan update, and released by the Board at the April 9, 2012 meeting for public comment. The plan update was adopted by the Board at its June 2012 meeting.</p>
<p>Milliken Reservoir Trails and Picnic Area Feasibility Study</p>	<p>The feasibility study has been completed, and accepted by the Board of Directors. The Napa City Council in November, 2009 approved city staff recommendation to hold off on the Milliken Reservoir trails project until the Hennessey trail project is up and running.</p>
<p>Moore Creek Open Space Park</p>	<p>Would construct approximately 3 miles of Bay Area Ridge Trail plus additional feeder and loop trails, along with a staging and picnic area</p>
<p>Moore Creek Open Space Park</p>	<p>Acquisition of 673 acres in the Moore Creek Watershed completed in December 2008.</p>
<p>Napa River Ecological Reserve Improvements</p>	<p>Parking area paved, and rock barrier installed to control vehicular access in 2007. Trash enclosure constructed and entry signs restored by volunteers in 2008. Deteriorated kiosk removed in 2008. The District in July 2008 assumed the County's role in managing the preserve under the joint management agreement with DFG. A new maintenance contract with the non-profit organization Options 3 was started in January 2009. The old deteriorated information kiosk, which had become a serious eyesore, was removed in November 2008.</p>
<p>Napa River Flood Control Easement</p>	<p>Conservation easement accepted by District in 2007 to facilitate Flood District project and grant funding</p>
<p>Newell Preserve Improvements</p>	<p>As part of the arrangement with the land trust on the District's purchase of Berryessa Vista, the land trust was willing to use some of the proceeds from the transaction to fund a well pump and distribution system at the Preserve. However, the first well drilled by the City of American Canyon came up dry. The City has dropped plans for digging any more test wells.</p>
<p>River to Ridge Trail Enhancements</p>	<p>Provide on-site water supply for group campground for cattle</p>
<p>River to Ridge Trail Enhancements</p>	<p>Installation of animal silhouettes along the entryway fence illustrating the types of birds and mammals that can be found in the area completed by Eagle Scout candidate in 2008. In November 2008 five Valley Oak trees were planted at the Highway 221 entrance to the trail with the assistance of a volunteer from CNPS.</p>
<p>River to Ridge Trail Entrance Enhancements</p>	<p>A new information kiosk was installed at the entrance in December 2008 as part of a Boy Scout project. Several Live Oak seedlings were donated by CNPS and have been planted at the entrance to improve its appearance.</p>
<p>River to Ridge Trail</p>	<p>Correct drainage problems to trail can be used year-round.</p>
<p>River to Ridge Trail</p>	<p>Two volunteer work weekends in March and April and two more in May of 2010 were organized by the District to clear brush, improve drainage, and surface about 300 feet of the trail with quarry fines to control problems with mud. Volunteers completed additional work in August 2011.</p>
<p>Skyline Park Road and Trail Improvements</p>	<p>Erosion control work on Lake Marie Road, and paving of campground loop road, completed in 2007 using State Prop 12 funds.</p>
<p>Skyline Park Concessionaire Agreement Renewal</p>	<p>District staff negotiated renewal of concessionaire agreement on behalf of the County. The renewal involved changes to the fee schedule and amendments to and approval of subagreements with three non-profit partner organizations.</p>

<p>Skyline Park Trail Improvements</p> <p>Major volunteer event to reroute and repair trails</p>	<p>Staff worked with SPCA and V-O-CAL to sponsor a weekend work party on October 15-17, 2010. Approximately 110 volunteers worked to reroute and repair trails experiencing serious erosion problems. SPCA is donating \$1,000 toward expenses.</p>
<p>Skyline Park Facility Improvements</p> <p>Partner-sponsored improvement include a second greenhouse and a covered equestrian arena.</p>	<p>The proposals for a second greenhouse and a covered arena were approved by the Department of General Services and by the County Board of Supervisors. The sponsors of these projects are now raising funds for implementation.</p>
<p>South Napa Wetlands Habitat Area</p> <p>Transfer to the District those wetlands owned by the Napa County flood control district between the Napa River, Highway 29 and Newport Drive for use as habitat and nature-based recreation.</p>	<p>Transfer was approved in concept by the flood control district, and Park District staff prepared the first draft of a transfer agreement. Subsequently, attorney's for the flood district concluded it would be better from their perspective for the flood district to retain ownership of the property, due to their ongoing maintenance obligations.</p>
<p>State Parks</p> <p>Assume management of Bothe-Napa Valley State Park and keep it and the Bale Grist Mill open</p>	<p>The District took over operations of the parks on April 1, 2012, and have a 5 year agreement with the State to continue operating the parks.</p>
<p>Trichero Open Space Acquisition</p> <p>Donation of 3,400 acres of open space to the District by Bob and Evalyn Trinchero</p>	<p>The donation was completed on December 29, 2010. A related granting of an access easement to the Lake Berryessa Resort Improvement District was completed in mid-January 2011.</p>
<p>Wild Lake Ranch</p> <p>Assist land trust with planning and possible joint management of trails, camping and picnic areas.</p>	<p>The District participated in the development of a strategic plan for the property, together with other public lands in the area, that was led by the Land Trust of Napa County. The land trust has decided, at least for the near term, to manage the Wildlake-Duff property itself.</p>