



**Napa County Regional Park
and Open Space District**

Karen Turjanis
Director, Ward One

Tony Norris
Director, Ward Two

Michael Haley
Director, Ward Three

Dave Finigan
Director, Ward Four

Barry Christian
Director, Ward Five

AGENDA

BOARD OF DIRECTORS SPECIAL MEETING

Monday, December 8, 2014 *at 2:00 P.M.*

NCTPA, 625 Burnell Street, Napa, CA 94559

NOTE SPECIAL LOCATION

General Information

Agenda items will generally be considered in the order indicated below, except for Set Matters, which will be considered at the time indicated. Agenda items may from time to time be taken out of order at the discretion of the President.

The meeting room is wheelchair accessible. Assistive listening devices and interpreters are available through the District Secretary. Requests for disability related modifications or accommodations, aids, or services may be made to the Secretary's office no less than 48 hours prior to the meeting date by contacting 707.259.8603.

Any member of the audience desiring to address the District on a matter on the Agenda, please proceed to the rostrum and, after receiving recognition from the President, give your name, address, and your comments or questions. In order that all interested parties have an opportunity to speak, please be brief and limit your comments to the specific subject under discussion. Time limitations shall be at the discretion of the President.

State law requires agency officers (Directors and Officers) to disclose, and then be disqualified from participation in, any proceeding involving a license, permit, or other entitlement for use, if the officer has received from any participant in the proceeding an amount exceeding \$250 within the prior 12 month period. State law also requires any participant in a proceeding to disclose on the record any such contributions to an agency officer.

All materials relating to an agenda item for an open session of a regular meeting of the Board of Directors which are provided to a majority or all of the members of the Board by Board members, staff or the public within 72 hours of but prior to the meeting will be available for public inspection, on and after at the time of such distribution, in the NCRPOSD Office at 1195 Third Street, Suite 210, Napa, California 94559, Monday through Friday, between the hours of 8:00 a.m. and 4:30 p.m., except for County holidays. Materials distributed to a majority or all of the members of the Board at the meeting will be available for public inspection at the public meeting if prepared by the members of the Board or County staff and after the public meeting if prepared by some other person. Availability of materials related to agenda items for public inspection does not include materials which are exempt from public disclosure under Government Code §§6253.5, 6254, 6254.3, 6254.7, 6254.15, 6254.16, or 6254.22.

1. Call to Order and Roll Call

2. Public Comment

In this time period, anyone may address the Board of Directors regarding any subject over which the Board has jurisdiction but which is not on today's posted agenda. In order to provide all interested parties an opportunity to speak, time limitations shall be at the discretion of the President. As required by Government Code, no action or discussion will be undertaken on any item raised during this Public Comment period.

3. Set Matters

none

4. Administrative Items

- a. Election of Board President and Vice-President
- b. Consideration and potential approval of Minutes of the Board of Directors regular meeting of September 25, October 13 and November 10, 2014.
- c. Consideration of and potential adoption of calendar and location of meetings for regular meetings of the Board of Directors.
- d. Consideration and potential authorization for Board President to submit comments on the proposed Syar Quarry expansion.
- e. Consideration and potential authorization for the District to accept the donation by Ms. Randy Johnson of a +/- 40 acre undeveloped parcel adjacent to the Oat Hill Mine Trail (Napa County Assessor's Parcel 018-030-026).
- f. Consideration and potential approval of a professional services agreement with Ron Critchley, for construction management work associated with the Camp Berryessa improvement project. Cost not to exceed \$25,000.
- g. Receipt of report on expenditures, encumbrances, donations, and grants approved by District staff.
- h. Receipt of monthly report for Bothe-Napa Valley State Park and the Bale Grist Mill State Historic Park.
- i. Review of the District Projects Status.

5. Announcements by Board and Staff

In this time period, members of the Board of Directors and staff will announce meetings, events, and other matters of interest. No action will be taken by the Board on any announcements.

6. Agenda Planning

In this time period, members of the Board of Directors and staff will discuss matters for possible consideration at future meetings. Other than to determine whether and when such matters should be agendized, no action will be taken by the Board on these items unless specifically noted otherwise.

7. Closed Session

- A. Public Employee Performance Evaluation (Government Code Section 54957)
TITLE: General Manager

8. Adjournment



**Napa County Regional Park
and Open Space District**

Karen Turjanis
Director, Ward One

Tony Norris
Director, Ward Two

Michael Haley
Director, Ward Three

Dave Finigan
Director, Ward Four

Barry Christian
Director, Ward Five

MINUTES

NAPA COUNTY REGIONAL PARK AND OPEN SPACE DISTRICT BOARD OF DIRECTORS SPECIAL MEETING

Thursday, September 25, 2014 at 2:00 P.M.
City Hall, 955 School Street, Napa, CA 94559

1. Call to Order and Roll Call

Directors present: Karen Bower-Turjanis, Tony Norris and Dave Finigan.

Staff present: John Woodbury, Chris Cahill, Chino Yip and Melissa Frost.

Advisory Committee members present: Phil Blake, Karen Chang, Jeff Dodd, Dandy Fagan, John Glaser, Samantha Holland, Richard Niemann, Roberta Oswald, Bob Russell, Howard Siegel, Brad Simpkins, Denice Britton Smith, Stu Williams. Richard Sieferheld was excused.

2. Public Comment

None.

3. Administrative Items

a. Introductions of Advisory Committee Members and District Board of Directors.
Dave Finigan and John Woodbury gave introductions. No action taken.

b. Presentation by General Manager and discussion regarding the purpose of Advisory Committee (see attached Resolution forming the Advisory Committee and By-Laws governing the functions of the Advisory Committee)
John Woodbury gave the report. No action taken.

c. Presentation by General Manager and discussion regarding the history of the District
John Woodbury gave the report. No action taken.

d. Presentation by General Manager and discussion of the District Master Plan and Master Plan 2012 Update (both documents posted at www.NapaOutdoors.org)
John Woodbury gave the report. No action taken.

- e. Consideration of and potential election of Advisory Committee Chair and Vice Chair
Committee members voted unanimously to elect Samantha Holland as Chair and Howard Siegel as Vice Chair.
- f. Consideration of and potential adoption of meeting calendar for the Advisory Committee (PLEASE BRING YOUR CALENDARS)
Committee members voted unanimously to adopt the Advisory Committee Meeting Calendar.

4. Announcements by Board and Staff

- John Woodbury announced that Moore Creek Park Lake Hennessey Unit Ribbon Cutting will be October 18, 2014
- Samantha Holland announced that the 3rd Annual Yountville Days will be the weekend of October 3, 2014

5. Adjournment

Meeting was adjourned to the regular NCRPOSD meeting of October 13, 2014.

DAVE FINNIGAN, Board President

ATTEST:

MELISSA FROST, District Secretary

Key

Vote: TN = Tony Norris; MH = Michael Haley; DF = David Finigan; BC = Barry Christian

The maker of the motion and second are reflected respectively in the order of the recorded vote.

Notations under vote: N = No; A = Abstain; X = Excused



**Napa County Regional Park
and Open Space District**

Karen Turjanis
Director, Ward One

Tony Norris
Director, Ward Two

Michael Haley
Director, Ward Three

Dave Finigan
Director, Ward Four

Barry Christian
Director, Ward Five

MINUTES

BOARD OF DIRECTORS SPECIAL MEETING

Monday, October 13, 2014 *at* 2:00 P.M.

NCTPA, 625 Burnell Street, Napa, CA 94559

NOTE SPECIAL LOCATION

1. Call to Order and Roll Call

Directors present: Karen Bower-Turjanis, Michael Haley, Tony Norris and Dave Finigan.
Staff present: John Woodbury, Chris Apallas, Chris Cahill and Melissa Frost.
Director Barry Christian was excused.

2. Public Comment

None.

3. Set Matters

None.

4. Administrative Items

- a. Consideration and potential approval of Minutes of the Board of Directors regular meeting of September 8, 2014 and Minutes of the special meeting of September 25, 2014.

Minutes for the September 8, 2014 meeting were approved as presented.

MH-KBT-DF-TN-BC

X X

Minutes for the September 25, 2014 meeting were not presented at this time.

- b. Consideration and potential adoption of resolution supporting the proposal by Congressman Thompson to establish the Berryessa Snow Mountain National Monument.

Directors voted to find that the proposed agreement is not a project under CEQA and adopted the proposed resolution supporting the proposal to Congressman Thompson to establish the Berryessa Snow Mountain National Monument.

TN-MH-KBT-DF-BC

X

- c. Receipt of report on expenditures, encumbrances, donations, and grants approved by District staff.
John Woodbury gave the report. No action taken.
- d. Receipt of monthly report for Bothe-Napa Valley State Park and the Bale Grist Mill State Historic Park.
John Woodbury gave the report. No action taken.
- e. Review of the District Projects Status.
John Woodbury gave the report with discussions on the Napa River Bay Trail, Berryessa Vista, Camp Berryessa, Lake Hennessey, Skyline Park and the Vine Trail.

5. Announcements by Board and Staff

- John Woodbury announced that the Lake Hennessey Ribbon Cutting will be held October 18, 2014.
- John Woodbury announced that the Myrna Abramowicz Commemorative Rock Dedication will be held November 8, 2014, 10 am
- John Woodbury announced that the Park & Open Space District Advisory Committee Field Trips will be held Oct 31 & Nov 5, 11 am

6. Agenda Planning

Next Board Meeting: Regular Board Meeting of November 10, 2014, 2 pm, at NCTPA
 Moore Creek Park Lake Hennessey Unit Ribbon Cutting: October 18, 2014
 Myrna Abramowicz Commemorative Rock Dedication: November 8, 2014, 10 am
 Park & Open Space District Advisory Committee Field Trips: Oct 31 & Nov 5, 11 am
 Park & Open Space District Advisory Committee Meeting: Nov 6, 2014, 2 pm

7. Adjournment

Adjourned to the Regular Board Meeting of November 10, 2014.

DAVE FINNIGAN, Board President

ATTEST:

MELISSA FROST, District Secretary

Key

Vote: TN = Tony Norris; MH = Michael Haley; DF = David Finigan; BC = Barry Christian

The maker of the motion and second are reflected respectively in the order of the recorded vote.

Notations under vote: N = No; A = Abstain; X = Excused



**Napa County Regional Park
and Open Space District**

Karen Turjanis
Director, Ward One

Tony Norris
Director, Ward Two

Michael Haley
Director, Ward Three

Dave Finigan
Director, Ward Four

Barry Christian
Director, Ward Five

MINUTES

BOARD OF DIRECTORS REGULAR MEETING

Monday, November 10, 2014 at 2:00 P.M.

NCTPA, 625 Burnell Street, Napa, CA 94559

NOTE SPECIAL LOCATION

1. Call to Order and Roll Call

Directors present: Karen Bower-Turjanis, Barry Christian, Tony Norris and Dave Finigan.

Staff present: John Woodbury, Chris Apallas, Chris Cahill and Teresa Bledsoe.

Director Michael Haley excused.

2. Public Comment

None

3. Set Matters

2:00 pm

- a. Approval of issuance of certificates of election and appointment by Board of Directors of the nominees to Ward 1 (Karen Bower Turjanis) and Ward 5 (Barry Christian).

Directors voted to approve the election certificates.

TN-DF-KBT-BC-MH

X

- b. Administration of Oaths of Office by County of Napa Clerk of the Board Gladys Coil for Directors of Ward 1 and Ward 5.

Gladys Coil administered the Oaths for Directors Karen Bower Turjanis and Director Barry Christian.

2:10 pm

- c. Presentation by Auditor-Controller Tracy Schulze of FY 2013-14 year-end financials and independent financial audit performed by Gallina LLP.

Tracy Schulze gave the report. No action taken.

- d. Consideration and potential approval of adjustments to the adopted budget for FY 2014-15.

Directors voted to find that the proposed action is not a project under CEQA and authorized amendments to the budget for fiscal year 2014-15 as presented.

KT-BC-TN-DF-MH

X

4. Administrative Items

- a. Consideration and potential approval of Minutes of the Board of Directors special meeting of September 25, 2014.

(Note: This item was deferred to the next meeting)

- b. Consideration and potential approval of Amendment #1 to Agreement 14-12 with Questa Engineering

Directors voted to find that the proposed amendment to Agreement 14-12 is not a project under CEQA and authorized the General Manager to amend Professional Services Agreement 14-12 with Questa Engineering regarding construction management services for the Napa River and Bay Trail Segments 7 & 8 project and to increase the scope and maximum amount of the Agreement by \$2,200 to include supplemental survey work.

TN-KT-BC-DF-MH

X

- c. Consideration and potential authorization for General Manager to send a letter to the Land Trust of Napa County requesting their assistance in acquiring APN# 019-220-017 (Voorhees).

Directors voted to find that the proposed action is not a project under CEQA and authorized the General Manager to send a letter of the Land Trust of Napa County requesting their assistance in acquiring an 80 acre parcel (APN# 019-220-017), and expressing the District's intent to acquire the parcel from the land trust at a future date

TN-KT-BC-DF-MH

X

- d. Consideration and potential award of contract to G.D. Nielson Construction, Inc. to construct Phase One of the Camp Berryessa Improvements Project, for a cost not to exceed \$1,736,820⁰⁰

Directors voted to find that this action is consistent with the Board's previously adopted mitigated negative declaration; and awarded the contract to G.D. Nielson Construction, with a cost not to exceed \$1,736,82000, and authorize the General Manager to sign all required contract documents and to approve change orders, if necessary, consistent with the District Purchasing Manual (§2 -4 (c)).

TN-KBT-BC-DF-MH

X

- e. Receipt of report on expenditures, encumbrances, donations, and grants approved by District staff.

John Woodbury gave the report. No action taken.

- f. Consideration and potential approval of Amendment #1 to Agreement #12-8 with Jeanne Marioni to perform outreach and volunteer services for Bothe-Napa Valley State Park and the Bale Grist Mill State Historic Park.

Directors voted to find that the proposed action is not a project under CEQA and authorized the

General Manager to execute Amendment #1 to Agreement #12-8 with Jeanne Marioni.
 KBT-BC-TN-DF-MH
 X

- g. Receipt of monthly report, and summary of accomplishments since April 2012, for Bothe-Napa Valley State Park and the Bale Grist Mill State Historic Park.
 John Woodbury gave the report. No action taken.
- h. Review of the District Projects Status.
 John Woodbury gave the report. No action taken.

5. Announcements by Board and Staff
 Tony Norris discussed Vine Trail progress.

6. Agenda Planning

Next Board Meeting: Regular Board Meeting of December 8, 2014
 Myrna Abramowicz Commemorative Rock Dedication: November 8, 2014
 Moore Creek Trail and Fence Work Day: November 15, 2014
 Ninth Year Celebration: TBD

7. Adjournment

Adjourned to the Regular NCPOSD Meeting of December 8, 2014.

DAVE FINIGAN, Board President

ATTEST:

Teresa Bledsoe, Acting District Secretary

Key

Vote: MH = Michael Haley; TN = Tony Norris; BC = Barry Christian; DF = David Finigan; KBT= Karen Bower Turjanis

The maker of the motion and second are reflected respectively in the order of the recorded vote.

Notations under vote: N = No; A = Abstain; X = Excused



Napa County Regional Park
and Open Space District

STAFF REPORT

Date: December 8, 2014

Agenda Item: 4.C

Subject: Consideration of and potential adoption of calendar and location of meetings for regular meetings of the Board of Directors

Recommendation

1. Find that the proposed action is not a project under CEQA
2. Adopt the attached schedule of meetings for 2015.
3. Set the regular meeting location as the Napa County Transportation Planning Agency public meeting room at 625 Burnell Street in the City of Napa, California for January through April, 2014, and the Board of Supervisors Chambers on the third floor of the County Administration Building, 1195 Third Street, in the City of Napa, California for May 2014 and thereafter.

ENVIRONMENTAL DETERMINATION

The proposed action is not a project as defined by 14 California Code of Regulations 15378 (State CEQA Guidelines) and therefore CEQA is not applicable.

Background

Prior to the beginning of each year the District Board is required to adopt a calendar for regular meetings of the Board of Directors. The Board is also required to adopt a regular meeting location. Because of the effects of the earthquake, the Napa County Board of Supervisors chambers will not be available until May 2014 or later. Staff therefore recommends the Board adopt the Napa County Transportation Planning Agency public meeting room as the designated location for Regular Meetings through the end of April, 2014, and as the County Board of Supervisors Chambers starting in May 2014. In the event the County Board of Supervisors Chambers will not be available in May as is currently projected, the District Board President will be asked to cancel the May Regular Meeting and call a May Special Meeting to be held at NCTPA or another available location.



Napa County Regional Park
and Open Space District

Karen Bower Turjanis
Director Ward One

Tony Norris
Director Ward Two

Michael Haley
Director Ward Three

Dave Finigan
Director Ward Four

Barry Christian
Director Ward Five

Board of Directors Regular Meeting Calendar 2015

Proposed December 8, 2014

<u>Day</u>	<u>Date</u>
Monday	January 12 th
Monday	February 9 th
Monday	March 9 th
Monday	April 13 th
Monday	May 11 th
Monday	June 8 th
Monday	July 13 th
Monday	August 10 th
Monday	September 14 th
Monday	October 12 th
Monday	November 9 th
Monday	December 14 th

Notes

- (1) Board meetings are normally the second Monday of each month. Exceptions if any are noted in bold red type.
- (2) The regular meeting start time is 2:00 PM.
- (3) The regular meeting location for the meetings in January through April will be at the Napa County Transportation Planning Agency, 625 Burnell Street, Napa, CA 94559. Starting in May, the regular meeting location will be at the County of Napa Board of Supervisors Chambers, 1195 Third Street, third floor, Napa, CA 94559



Napa County Regional Park
and Open Space District

STAFF REPORT

Date: December 8, 2014

Agenda Item: 4.D

Subject: Consideration and potential approval of District comments on the Syar Napa Quarry Final EIR

Recommendation

1. Find that the proposed action is not a project under CEQA
2. Approve one of the potential options described in this staff report

ENVIRONMENTAL DETERMINATION

The proposed action is not a project as defined by 14 California Code of Regulations 15378 (State CEQA Guidelines) and therefore CEQA is not applicable.

Background

In response to the Notice of Preparation of an Environmental Impact Report (EIR) for the expansion of the Syar quarry adjacent to Skyline Wilderness Park, the District Board in July 2009 requested that analysis of the project consider various potential aesthetic, noise, air quality, ground water and biological impacts. The County of Napa released a Draft EIR in August 2013, and in October 2013 the District Board of Directors authorized the Board President to submit comments on the adequacy of the Draft EIR.

Napa County staff released the Final EIR in November of 2014. The Final EIR includes the Draft EIR plus responses to comments made on the Draft EIR, as well as any changes to the Draft EIR made in response to comments received. The Napa County Planning Commission in January 2015 will be asked to certify the Final EIR. If the Commission certifies the Final EIR, the Commission will then make a decision to approve, deny or approve the project with modifications.

The Board has these options:

- Take no action. This option would be appropriate if the Board determines that the Final EIR adequately responds to the District's prior comments on the Draft EIR, or if the Board determines the District should not get further involved in this land use permit process.
- Authorize the Board President to submit comments to the Planning Commission about the adequacy of the Final EIR. This option would be appropriate if the Board determines that the Final EIR has not adequately responded to District comments on the Draft EIR.

- Take a position on the project. Whether or not the Board comments on the FEIR, the Board also has the option of taking a support or oppose position on the project as proposed, and/or request changes to the project itself.

Attached to this memo is a copy of the comment letter the District submitted in 2013, together with responses in the FEIR to those comments. The Board will need to determine whether the Responses to Comments, together with the information in the DEIR, adequately identifies significant environmental impacts.

To assist with the determination, staff offers the following observations:

- (1) The project has not been altered in any substantial way in response to any of the comments on the projects made by the District or other commentators.
- (2) The first and most important comment the District made on the Draft EIR (comment M-7) was to ask for more detail on the two alternatives to the project as proposed: a reduced footprint option and a reduced rate of production option. This comment was also made by others including Friends of the Napa River (comment L-2). The response to this comment was that no further analysis of alternatives was necessary.

The standard for alternatives set by the California Environmental Quality Act requires that the public and decision-makers be provided with sufficient information to compare the relative significance of potential impacts of the project as proposed and feasible alternatives to the project that may have fewer environmental impacts. CEQA also requires that the reviewing body identify the “environmentally superior” alternative. District staff continues to believe that the reduced footprint alternative is economically and physically feasible, and would most likely have significantly less adverse impact on Skyline Park. However, since the Final EIR contains no actual mapping of this alternative, nor quantification of the environmental impact of the project as proposed compared to this alternative, it is not possible to determine whether and to what degree a reduce footprint alternative would be environmentally superior. It is also not possible to quantify what the project sponsor would be giving up under the reduced footprint alternative.

- (3) The Response to Comment M-3 notes that in November of 2013 the State issued new maps that expanded designated mineral resource areas to include the Pasini property. Response M-3 implies that the County must adopt this new map and designate these areas as appropriate for mining when it next updates the County General Plan. This is misleading; when updating the General Plan, the County will need to consider this and any other new information that comes to light, but whether the property is designated in the General Plan as a mining area is a discretionary decision. As an aside, the new State maps also now show much of Skyline Wilderness Park as a mineral resource area, but that doesn’t mean the County would need to change its General Plan and Zoning designations for Skyline Wilderness Park and approve a quarry in that location.
- (4) Regarding air quality, Response to Comment M-4 states that dust and odor should not be a problem for Skyline Park because the prevailing winds are from the south, not the west. However, the 1973 EIR for the Syar quarry stated that prevailing winds are from the southwest. Either way, much of the park is located north of the proposed quarry expansion, and nearly all of the park is located northeast of the proposed expansion area.

- (5) Regarding air quality, Response to Comment M-4 also states that it is common for winds to follow the terrain rather than separate at the ridgeline, and thus concludes that removal of the hill that separates the park from the Pasini property would have no impact on air quality. However, it is also true that winds tend to flow around obstructions. Removing the hill the separates the park from the proposed quarry expansion area should therefore be expected to expose the park to increased air flow from the quarry.
- (6) Regarding visual impacts, Response to Comment M-4 restates the definition contained in the DEIR for what constitutes a significant impact. This definition sets a very high standard for what constitutes a significant impact. However, this definition is not contained in the adopted County General Plan, Zoning Ordinance or other adopted policies; instead, it appears to have been created by the consultants preparing the DEIR.

Response to Comment M-4 goes on to say that the Pasini property's "rolling terrain and oak woodlands is representative of local scenery rather than exceptional or exemplary, lacking striking landform features", and therefore concludes that expanding the quarry into this area would have no significant visual impact. Does Napa County really believe that destroying rolling terrain and oak woodlands does not constitute a significant visual impact?

- (7) Regarding noise impacts, Response to Comment M-9 notes that the proposed expansion of the quarry into the Pasini property would have a significant noise impact, but then concludes that this impact can be reduced to insignificance through mitigation measure 4.11-1. This mitigation measure calls for acoustical shielding being maintained for the longest time possible, for the quarry operators to use the quietest available equipment, and that noise monitoring be conducted to ensure that County noise standards are not exceeded. How this mitigation would accomplish the objective of reducing the impact to a level of insignificance is not explained:
- (a) The "acoustical shielding" refers to the hill separating the Pasini parcel from the park. This is the very hill that could be preserved should a "reduced footprint" alternative be required by the County. There is no information on how long this hill would remain, so it is impossible to assess the effectiveness of this mitigation. Once gone, the data presented in the DEIR indicates there would be a significant noise impact on the park.
 - (b) When dealing with mining, the "quietest available equipment" is still noisy; no analysis has been presented demonstrating how much noise levels would be reduced by using the quietest mining equipment.
 - (c) Monitoring noise levels after the quarry expansion has been approved is of little value, unless the County were to commit to shut down mining operations if noise levels are exceeded.
- (8) Response to Comment M-16 is difficult to understand. Most of the literature on mitigation agrees that mitigations should be in place before the impact occurs. The DEIR found that the impact to oak woodlands would be a significant impact, and therefore the project as proposed is required to mitigate this impact through preserving replacement oak woodlands. Since this mitigation is necessary to reduce the impact to a level of insignificance, the timing of this mitigation would seem to be very relevant.
- (9) Response to Comment B-6 states that it is only an "opinion" that mitigation areas should be as close as possible to the impact site. This comment is also difficult to understand, since

most of the literature on mitigation agrees that the best practice is to locate mitigation sites as close to the impact sites as possible.



Napa County Regional Park
and Open Space District

RECEIVED

NOV 14 2013

Napa County Planning, Building
& Environmental Services

Karen Bower Turjanis
Director Ward One

Tony Norris
Director Ward Two

Michael Haley
Director Ward Three

Dave Finigan
Director Ward Four

Barry Christian
Director Ward Five

November 14, 2013

Donald Barrella, Planner III
Planning, Building and Environmental Services
County of Napa
1195 Third Street, second floor
Napa, CA 94559

RE: Comment on Draft Environmental Impact Report for the Syar Napa Quarry Expansion and Surfacing Mining Permit

Mr. Barrella:

The Napa County Regional Park and Open Space District appreciates the opportunity to comment on the Draft EIR for the Syar Napa Quarry Expansion and Surfacing Mining Permit. The Board of Directors considered the DEIR at its October 2013 regular Board meeting, and approved the following comments on the DEIR.

M-1

The District in 2009 commented on the project in response to the Notice of Preparation of an Environmental Impact Report for the proposed project. At that time the District Board requested that analysis of the project consider various potential aesthetic, noise, air quality, ground water and biological impacts. The primary focus of the District's comments was on the proposal to expand quarry operations onto the Pasini property, since this appeared to have the greatest potential to impact Skyline Park,

M-2

The Pasini property has historically never been part of the quarry operation, and is not designated in the County General Plan as a mineral resource area.

M-3

As part of the proposal to expand mining into the Pasini property, Syar proposes to remove the small ridge located along the northern boundary of the Pasini property. This ridge currently provides an effective barrier between the quarry and the park. With the removal of this knoll and ridge, it appears that the central portion of the wilderness part of Skyline Park would be directly exposed to quarry noise, dust and odor. The existing visual barrier between the park and the Pasini property would also be removed along approximately 750 feet of the Pasini/Skyline Wilderness Park boundary.

M-4

This expansion of the proposed mining area into much of the Pasini property increases the potential for impacts on Skyline Wilderness Park, and makes it even more important to adequately understand potential impacts on the park related to noise, visual impact, dust, odor and hydrology.

M-5

While the DEIR contains much useful data, in the judgment of the District it is not adequate to enable decision-makers to make fully informed decisions on the project. The District therefore requests that the Final EIR respond to the following specific comments:

- | | |
|---|------|
| (1) <u>Alternatives.</u> The DEIR identifies two potential alternatives to the project as proposed. The | |
| “Reduced Footprint/Conservation Alternative” would allow the same annual rate of quarry | |
| production, but would reduce the geographic extent of the quarry. However, there is no site | |
| plan associated with this alternative, so it is difficult to understand how it translates on the | |
| ground. If adopted, this alternative at first glance would appear to significantly reduce | M-7 |
| impacts on the park, while still allowing a dramatic increase in the rate of production (from | |
| 0.81 to 2.0 million tons per year extracted, for a 247% increase.). Therefore, the District | |
| requests a more detailed description of the “Reduced Footprint/Conservation Alternative”, | |
| including a more thorough comparison of the proposed project to this alternative in terms of | |
| visual, noise, dust and odor impacts. A site map showing the physical extent of this | |
| alternative would also be very helpful for assessing the effect of this alternative. | M-8 |
| (2) <u>Noise.</u> The DEIR (Figures 4.11-35 and -36) shows projected quarry noise levels as high as | |
| 70 dBA along the edge of Skyline Park, and noise levels in excess of 50 dBA over much of | |
| the central portion of Skyline Park. Given that this portion of Skyline Park is essentially a | |
| wilderness, where current background noise levels are thought to be very low, it is surprising | |
| that the DEIR concludes there would be no significant noise impact on Skyline Park. | M-9 |
| According to Figure 4.11-1, of the eight noise monitoring locations shown, none were | |
| located in the wilderness portions of Skyline Park. Without knowing ambient noise levels in | |
| these areas, how was it possible to conclude that noise impacts on the park are less than | |
| significant? The FEIR should either find noise to be a significant impact, or explain how the | |
| finding of no significance is justified. | |
| (3) <u>Assurances.</u> Several areas along the border between the quarry and the park are proposed as | |
| exclusion areas where no mining will take place. These exclusion areas provide important | |
| buffers between the quarry and the park. However, there appears to be no mechanism to | |
| assure these buffers remain for the long term. It would greatly strengthen protection for | M-10 |
| Skyline Park to have these exclusion areas permanently protected through a conservation | |
| easement. The FEIR should address the effect of requiring the exclusion areas to be | |
| permanently protected through a conservation easement held by an independent third party. | |
| (4) <u>Visual Impacts.</u> The DEIR analysis of visual impacts (especially from Sites C10 and C11, as | |
| illustrated on pages 4.1-19 and 4.1-20) shows the proposed project will be highly visible | M-11 |
| from some of the wilderness portions of the park, yet the DEIR concludes this is not a | |
| significant impact. How does this conclusion mesh with County General Plan policies listed | |
| on pages 4.1-7 to 4.1-9? | |
| (5) <u>Surface Water Flows.</u> Figure 4.8-2 showing the quarry watershed and direction of water | |
| flows does not show water flows for the northern portion of the Pasini property. Under the | |
| proposed project this area would be excavated and water that currently flows into Skyline | |
| Park would in the future have its direction reversed and thus drain into what is left of Arroyo | M-12 |
| Creek. The Figure should be corrected, and the analysis should be revised to reflect this | |
| information. | |

In addition, as proposed, the pond located on the Pasini property would be retained, but the expanded mining operation would eliminate what appears to be the primary source of water for the pond. If eliminated, it seems likely the pond would dry out and disappear for most of each year. This potential impact does not appear to have been analyzed in the DEIR.

M-13

- (6) Groundwater. Figure 4.8-6 showing groundwater flows does not include groundwater flows for most of the Pasini property. All of the Pasini property that is proposed for mining should be analyzed for groundwater flows and whether/how the quarry expansion would affect groundwater resources in the park.

M-14

- (7) Oak Woodlands. Mitigation 4.4-9 requires the developer to permanently preserve 111 acres of Oak Woodland off-site, but the mitigation is permitted to be located anywhere in Napa County. There is general agreement in the conservation community that mitigation habitat should generally be as close to the project impact site as possible. Since there are several potential opportunities to acquire fee title or easements for Oak Woodlands in the immediate vicinity (including Skyline Park itself, as well as other privately-owned parcels to the east and south of Skyline Park, the FEIR should consider tightening the mitigation measure to indicate that priority will be given to Oak Woodland habitat on nearby parcels before considering more remote locations.

M-15

In addition, the mitigation requirement does not appear to have a time frame or deadline for implementation. For habitat mitigation to be most effective, it should be in place before the impact occurs. Therefore, the FEIR should also include a deadline by when the preservation of the off-site acres will be completed, and the rationale for that timing.

M-16

- (8) Trails. Page 4.14-5 (first paragraph) states that other than the lower Skyline Trail, trails that encroach onto Syar property (see Figure 4.14-1, inset B, C, and D) would not interfere with the proposed quarry expansion, and therefore Skyline Park would be granted a temporary easement or license to retain those trails. However, the proposed easement or license could be revoked at any time. Since those trails are located in designated "Exclusion Areas", which the project description says will not be developed, requiring the grant of a permanent trail easement should have no impact on the quarry, but would provide more protection for Skyline Park from the effects of the proposed expansion. This option should be considered in the FEIR.

M-17

- (9) Trail Relocation. Syar has proposed to pay for the relocation of a short section of the Skyline Trail so that it would no longer encroach on Syar property. The Skyline Park Citizens Association believes that the new alignment proposed by Syar is not workable, and so earlier this year proposed a new realignment. In addition to the section directly affected by the proposed quarry expansion, the Association also identified an improved route for the next section of the trail to the south. However, this reroute of this next section of the Skyline Trail is not really connected to the quarry expansion project.

M-18

The realignment proposed by the Association for the northern section of the trail appears to be far superior to the alignment shown in the DEIR, and should be analyzed in the FEIR. It should be noted that under the County's lease of the property from the State, State approval is required for any significant improvements in the park. Therefore, once the preferred location of the trail is settled, it will need to be forwarded to the State Department of Real Estate for their review. The proposed realignment must be adequately considered in the FEIR before the State can be approached about approval for the realignment. At this time

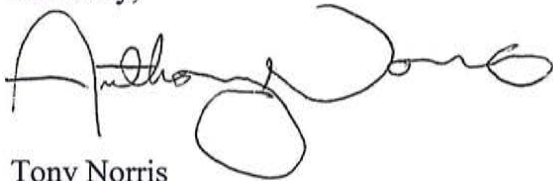
M-19

there is no reason to believe that it would be a problem to get State approval. However, the State will most likely charge for this review, so any review charges they may impose should be included in the cost of the trail relocation.

M-19
(cont.)

Thank you for your consideration of these comments.

Sincerely,

A handwritten signature in black ink, appearing to read "Anthony Norris". The signature is fluid and cursive, with a large loop at the end.

Tony Norris
President
Board of Directors

Letter M Response to Comments

Response to Comment M-1

In this general comment the Napa County Regional Park and Open Space District appreciates the opportunity to comment on the Draft EIR, and states that their Board of Directors considered the Draft EIR at its October 2013 regular Board meeting, and approved the following comments on the Draft EIR. This comment does not comment on the adequacy of the Draft EIR. No further response is necessary.

Response to Comment M-2

This comment acknowledges the District's 2009 response to the NOP for the project. This comment does not comment on the adequacy of the Draft EIR. No further response is necessary.

Response to Comment M-3

The commenter is correct that the Napa County General Plan does not designate the Pasini property as a mineral resource area; however, the State Mining and Geology Board (SMGB), at its regular business meeting held on November 14, 2013, accepted California Geological Survey's Special Report 205 on Update of Mineral Land Classification: Aggregate Materials in the North San Francisco Bay Production-Consumption Region, Sonoma, Napa, Marin, and Southwestern Solano counties, California (California Geological Survey 2013a and 2013b). The report and map that accompanies this special report identifies the land immediately adjacent to and east of the project site (including the Pasini property and parts of Skyline Wilderness Park) as MRZ-2, which are "areas underlain by mineral deposits that geologic data indicate to be significant. Contains known economic mineral deposits." The report and map are available online. Reference "Section 5. References" for the location of the report and map.

Pursuant to Public Resources Code Section 2762 the county is obligated to eventually amend the General Plan to recognize mineral information classified by the State Geologist. At the present time the county has not amended the General Plan incorporating this information.

Response to Comment M-4

The commenter states that the ridge located along the northern boundary of the Pasini property "provides an effective barrier between the quarry and the park" and that removal of the knoll and ridge would apparently expose the central portion of the wilderness part of Skyline Park to quarry noise, dust and odor. With respect to dust and odor, the effect of the knoll and ridge are minimal. Skyline Park is usually crosswind from the quarry with the wind predominantly occurring out of the south. Winds out of the west are fairly light and infrequent based upon review of the projects *Air Quality and Health Risk Impact Assessment* (Draft EIR Appendix I). In fact, it is common for winds to follow the terrain rather than to separate from the terrain at a ridgeline. Accordingly, and as described in the AQHRA, impacts from the project were modeled using flat terrain such that removal of the ridge would be consistent with impacts predicted in the Draft EIR. EPA AERMOD Implementation Guide (March 19, 2009) discusses terrain following plumes and recommends the approach used in the Draft EIR.

(http://www.epa.gov/scram001/7thconf/aermod/aermod_implmnt_guide_19March2009.pdf). Odor is mainly due to asphalt plant activities which are not proposed to change on daily and hourly bases. In addition, the asphalt operations occur over a mile away from Skyline Park. Therefore, one would not expect to have a significant impact from odor with or without the ridgeline.

All noise level projections for Skyline Wilderness Park are worst-case as uninterrupted line-of-sight to quarrying activities was assumed in the calculation of noise levels within Skyline Wilderness Park.

The left-hand sides of cross sections E, F, and G of Figures 3-6 show comparisons of existing and proposed topography along the quarry's north extent. These sections indicate that some areas of excavation will reveal backslopes of quarried areas and result in some changes to terrain. Note that the Sections are also vertically exaggerated.

It is the policy of Skyline Wilderness Park that visitors to the park must stay on designated trails. Modeling and analyses conducted for this EIR indicate that views of the proposed project will be limited to a very small percentage of the overall trail system. The vast majority of the linear footage of the trails within Skyline Wilderness Park will not have a view of the project. Those locations that do have views will have limited views of only portions of the project.

Views from the majority of Skyline Wilderness Park will not be affected due to relative viewing angles, intervening topography within Skyline Wilderness Park, and vegetation within the park. The Composite Viewshed of Project figure (Figure 4.1-3, page 93) places views from the north of the site in the zero to five percent category of project visibility. The project's vegetated 50' buffer with existing trees and shrubs will also provide some screening of exposed areas.

The Draft EIR analyzes the potential impacts of the project beyond the baseline existing conditions. Portions of the quarry are currently visible from some portions of some of the trails within the park. It is important to note that the analysis of impacts considers the range and degree of impacts beyond the baseline existing conditions.

The Viewshed and Line of Sight Diagram (Figure 4.1-10) for Site C10 shows that significant quarry excavation is shielded from view. The Year 35 Simulation for Site C11 shows preservation of foreground imagery, which largely screens mid-ground quarry activity. This mid-ground area will also be re-vegetated and reclaimed post-quarrying. Background views remain unchanged.

Section 4.1.3.3 of the Draft EIR discusses Skyline Wilderness Park's levels of visual exposure to the project beyond the existing baseline conditions. Expanded quarrying activity will in some locations increase views of quarried slopes. The degree to which this impacts the color and contrast with the surrounding landscape is considered less than significant.

Page 4.1-9 of the Draft EIR states "degraded visual quality would be considered significant if the project severely alters or displaces scenic resources composed of striking landform features, aesthetic water bodies, mature stands of native/cultural trees, or historic structures."

While the landscape of the Pasini parcel abutting Skyline Wilderness Park has rolling terrain and oak woodlands, it is representative of local scenery rather than exceptional or exemplary, lacking “striking landform features.” Visual impacts are noted but are generally found to be less than significant to the overall landscape and visual resources (also please see Response to Comment B-3).

Response to Comment M-5

This comment notes the expansion of the mining area into much of the Pasini property and that this increases the potential for impacts to the park. Potentially significant environmental impacts to the park have been adequately analyzed in the EIR.

Response to Comment M-6

In this comment the District says that “while the Draft EIR contains much useful data, in the judgment of the District it is not adequate to enable decision-makers to make fully informed decisions on the project.” Please see Responses to Comments M-7 through M-19.

Response to Comment M-7

Please see Response to Comment L-2.

Response to Comment M-8

Please see Response to Comment L-2.

Response to Comment M-9

Noise measurements made at sites LT-1, LT-2, LT-3, and LT-4 (Draft EIR Figure 4.11-1) were made at or near the quarry boundary contiguous with the boundary of Skyline Wilderness Park. Noise measurements were made during weekdays in order to quantify existing quarrying noise levels near the quarry boundary. Noise levels were also measured over a weekend in order to quantify ambient noise levels in the absence of quarrying activities. Noise levels measured at sites LT-1, LT-2, LT-3, and LT-4 were considered representative of the ambient noise levels experienced in Skyline Wilderness Park and were utilized in the noise impact assessment. The Draft EIR found that the expansion of the quarry would result in a potentially significant noise impact as noise levels from quarrying activities could be heard over large distances because of the low ambient noise environment. Mitigation Measure 4.11-1, which applies to all expansion areas including those adjacent to Skyline Wilderness Park, requires that acoustical shielding be maintained for the longest time possible, that the quietest available equipment be used when removing topsoil and overburden, and that noise monitoring be conducted to ensure that quarrying noise levels would not exceed Napa County noise standards, thereby reducing the impact to a less than significant level.

Response to Comment M-10

Comment noted. As stated on page 3-6 of the Draft EIR, the proposed project includes relocating and providing license agreements (such as rights-of-way) for existing sections of Skyline Wilderness Park trails constructed on quarry property, and establishing 50-foot property boundary buffers and mining exclusion areas within the quarry property. The county will require that a license agreement (or some other form of agreement agreed upon by Syar and the county) is obtained for relocated trails on Syar's property. Also, please see Response to Comments B-7 and M-17.

Response to Comment M-11

Please see Response to Comment M-4.

Response to Comment M-12

Figure 4.8-2 shows existing overland flow paths and watershed boundaries. Figure 4.8-10 shows the full-expansion area and resulting watershed boundaries. A small portion of the ridge that divides the Maria Creek and Arroyo Creek watersheds is located within the proposed full-expansion area. Upon full-expansion a small portion of the Maria Creek watershed that currently drains towards Skyline Wilderness Park will become part of the Arroyo 3 sub-watershed. Figure 4.8-10 of the Draft EIR shows the proposed full-expansion area and the analysis included as part of Impact/Mitigation Measure 4.8-5 accounts for the slight increase in Arroyo Creek watershed area as a result of full-expansion and as mitigated results in a less than significant impact, and as discussed and analyzed in Impact/Mitigation Measure 4.8-8 of the Draft EIR, there would be no direct effect on surface waters of Skyline Wilderness Park is anticipated as a result of mitigation.

Response to Comment M-13

Please see Response to Comment L-7.

Response to Comment M-14

Under existing conditions, this water evaporates from the pond feature, overflows into the Arroyo Creek drainage or infiltrates into the Arroyo Creek aquifer system.

Response to Comment M-15

Similar to Response to Comment B-6, the project proponent is interested in opportunities in proximity to the project site for oak woodland preservation, and will consider those sites with willing land owners. It should be noted that the project proponent may consider other sites in Napa depending on various contributing decision factors such as timeline, feasibility, availability, quality, and ownership status. Also the project will take into consideration requirements of Mitigation Measure 4.4-9 which states that oak preservation sites should be of like quality and habitat value as those being removed, to be determined by a qualified biologist, unless the mitigation ratio is further increased.

Response to Comment M-16

The oak woodland preservation mitigation measure language and mitigation ratio were developed in compliance with county policies. The timing of when the preservation activities occur will be negotiated with the county during the permitting phase of the project. Preservation activities as a mitigation measure have reduced temporal loss; therefore, mandating the mitigation prior to impacts is not as crucial. Similar to Response to Comment M-15, the timing of the preservation or in-lieu fee payment will depend on availability of willing land owner(s) and permit conditions with the county. This comment does not address a potentially significant impact, as impacts to oak woodlands have been reduced to a less than significant level.

Response to Comment M-17

As stated on page 3-6 of the Draft EIR, the proposed project includes relocating and providing license agreements (such as rights-of-way) for existing sections of Skyline Wilderness Park trails constructed on quarry property, and establishing 50-foot property boundary buffers and mining exclusion areas within the quarry property. The county will require that a license agreement (or some other form of agreement agreed upon by Syar and the county) is obtained for relocated trails on Syar's property. Also, please see Responses to Comments B-7 and M-10.

Response to Comment M-18

Please see Response to Comment B-7.

Response to Comment M-19

Please see Response to Comment B-7.

Response to Comment B-6

The commenter states that protection of oak woodlands in the vicinity of the project site should be made a higher priority than at more distant locations within the county and further states that this prioritization might provide reduction in potential noise, dust, odor, and aesthetic impacts. Potential impacts from noise, dust, odor, and/or aesthetic impacts have been addressed in those resource categories and mitigation measures provided that would reduce impacts to a less than significant level, and the specific location for oak preservation would not change these potential impacts that are already reduced to less than significant level. Additionally, it is an opinion that areas closer to the project site should be prioritized and this comment does not address a potential significant environmental impact. The project proponent is interested in opportunities in proximity to the project site for oak woodland preservation, and will consider those sites with willing land owners, yet may consider other sites in Napa depending on other factors such as timeline, feasibility, and ownership. Also, the project will take into consideration requirements of Mitigation Measure 4.4-9 which states that oak preservation sites should be of like quality and habitat value as those being removed, to be determined by a biologist, unless the mitigation ratio is further increased.

Response to Comment B-7

The applicant's adaptive mining strategy and related planning issues make it preferable to refine and finalize the proposed trail alignment at a later date. Because these details are speculative and uncertain at this time, the final alignment would require subsequent CEQA analysis and would be subject to the County's review and approval. Mitigation Measures which could be implemented include, but are not limited to, preconstruction surveys, avoidance, and regulatory agency permit compliance. Also see Response to Comment M-10.

Response to Comment B-8

Comment noted.

Letter L Response to Comments

Response to Comment L-1

This general comment from the Friends of the Napa River (FONR) acknowledges FONR's "focus on a viable watershed important to surviving woodland adjacent to publically accessible lands." This comment does not comment on the adequacy of the Draft EIR. No further response is necessary.

Response to Comment L-2

The Reduced Footprint/Conservation Alternative has been analyzed in the Draft EIR at an appropriate level of detail and analysis in order to provide the public and the decision-makers with sufficient information to compare the relative significance of potential impacts between the specifically studied project and a reasonably considerable alternative to make a reasoned choice among the alternatives, as CEQA requires.

Response to Comment L-3

The buffer areas are not proposed to be set up as "conservation and public access easements" as they are intended to separate the public use areas and provide a safety buffer from the private site. These areas will be recorded via a deed restriction in a form acceptable to the county, and the timeline, as requested by the commenter, is determined per Mitigation Measure 4.4-9 to occur prior to any new vegetation removal.

Response to Comment L-4

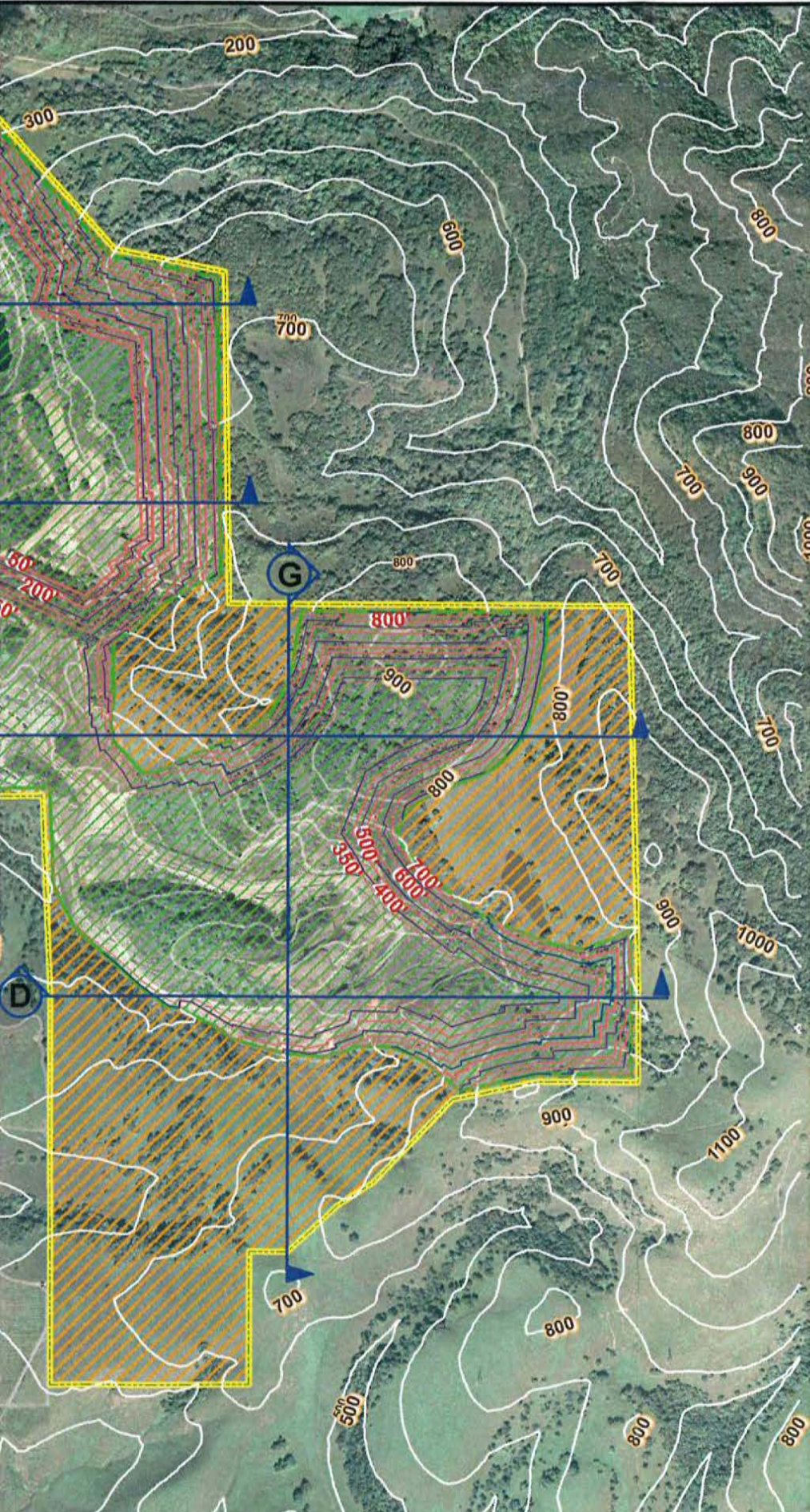
A good portion of the Pasini property is identified as an Exclusion Area (see Figure 3-4) in the Draft EIR, which is also consistent with the Project's Notice of Preparation. Furthermore, the county is not aware of any plans showing the entirety of the Pasini property as an exclusion area. This comment does not comment on the adequacy of the Draft EIR. No further response is necessary.





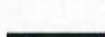



Response to Comment L-5

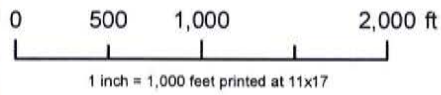
Several areas within the project site have been avoided and retained as exclusion areas that provide buffers, linkages (also please see Response to Comment D-18), and creek avoidance. The northeast portion of the Pasini portion of the project site is a key part of the proposed project and is important in maintaining a viable project. The northeast corner does include a 50 foot setback from property lines to provide a buffer from adjacent property uses and additional buffer in this area is not deemed necessary as impacts have been reduced to a less than significant level.

Response to Comment L-6

The hydrology and water quality section of the Draft EIR (Section 4.8) addresses impacts from site expansion areas and conducted analysis of subterranean flow and potential impacts of the proposed



-  Project Site
-  Exclusion Area
(See Figure 3-4)
-  Excavation Limits
-  Processing Area
-  Existing Road
(to be maintained)
-  Proposed Finished
Grade Contours
-  Existing Surface
Contours
-  Profile Cut Line
(see Figure 3-6 for Profiles)



Sources: Napa County GIS; 2007 Napa County Orthophoto 0.5 ft resolution.

WINZLER & KELLY
www.w-and-k.com

Cartography BFV/AF/GLD	Date 7/29/2013	Project # 02304-09-001
---------------------------	-------------------	---------------------------

Figure 3-5
Limits of Vertical Excavation

Draft EIR
Syar Napa Quarry Expansion

© Winzler & Kelly



Napa County Regional Park
and Open Space District

STAFF REPORT

By: Chris Cahill
Date: December 8, 2014
Item: 4e
Subject: Consideration and potential authorization for the District to accept the donation by Ms. Randy Johnson of a +/- 40 acre undeveloped parcel adjacent to the Oat Hill Mine Trail (Napa County Assessor's Parcel 018-030-026).

RECOMMENDATION

1. Find the action categorically exempt under CEQA.
2. Authorize the Board President to sign the grant deed certificate of acceptance and for the General Manager to execute any other documents necessary to accept the grant of Napa County Assessor's Parcel 018-030-026.

ENVIRONMENTAL DETERMINATION

Categorically Exempt. The acquisition of land (or interests in land) in order to preserve fish and wildlife habitat and/or to provide access to public lands and waters is exempt from the application of the California Environmental Quality Act (CEQA) under State CEQA Guidelines, Class 13 (*Acquisition of Lands for Wildlife Conservation Purposes*) and the Napa County Regional Park and Open Space District's Local CEQA Guidelines, Class 5, Sub 2 (*Minor Alterations in Land Use Limitations – Acceptance of Interest in Property*). There are no unusual circumstances associated with the acquisition of the subject parcel that would cause it to have a significant effect on the environment.

BACKGROUND

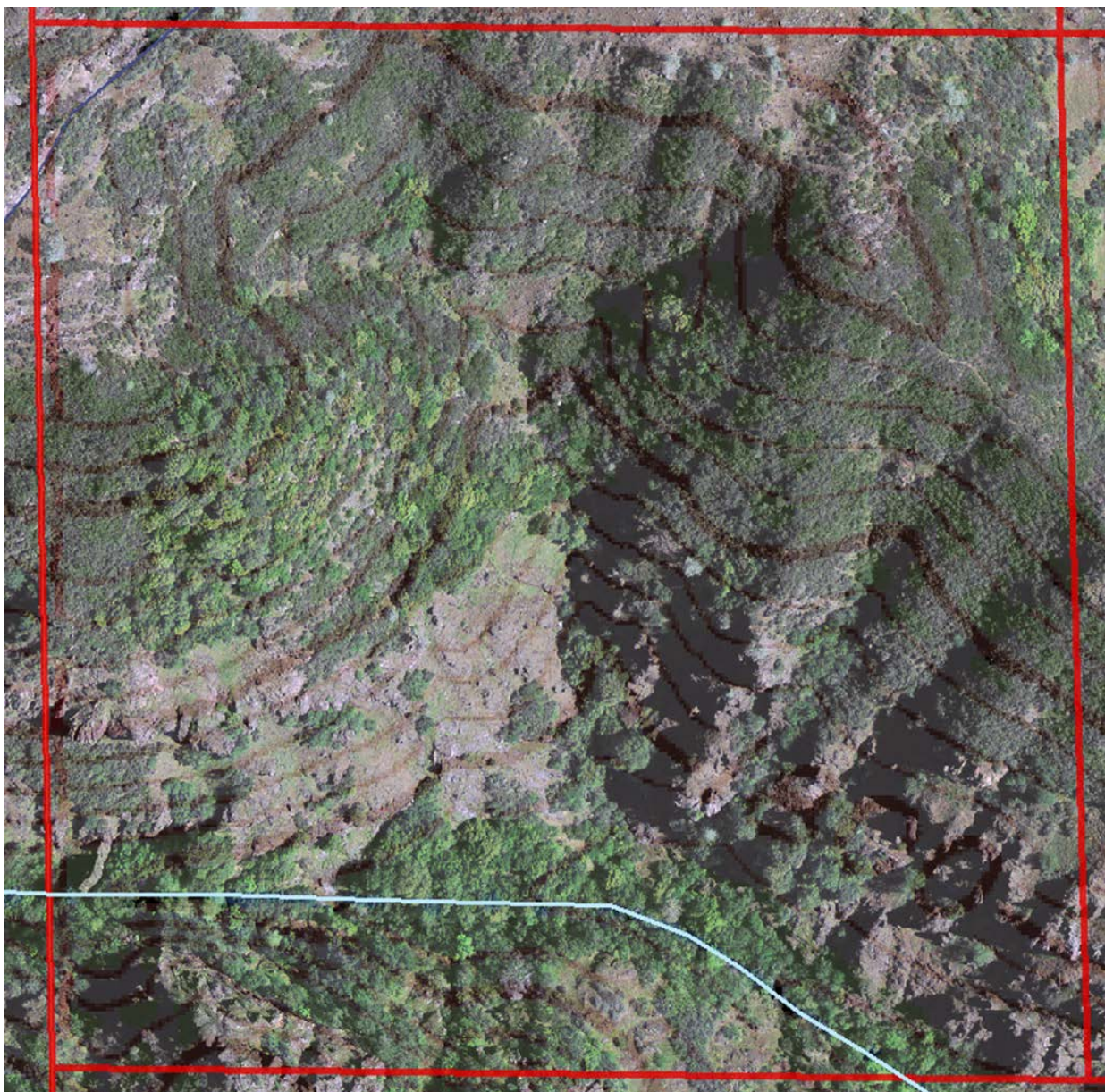
In late September the District was contacted by Ms. Randy Lee Johnson, of Sebastopol, about the possibility of her donating a +/- 40 acre undeveloped parcel located along the Oat Hill Mine Trail to the District (location map attached). The property is owned by the Randy Lee Johnson Trust, of which Ms. Johnson is the sole trustee, and Ms. Johnson would like to complete the transfer of the property on or before December 31st of this year.

Because of steep topography and very difficult vehicular access conditions, the 40 acre parcel does not have a substantial market value. Were it transferred into our possession the

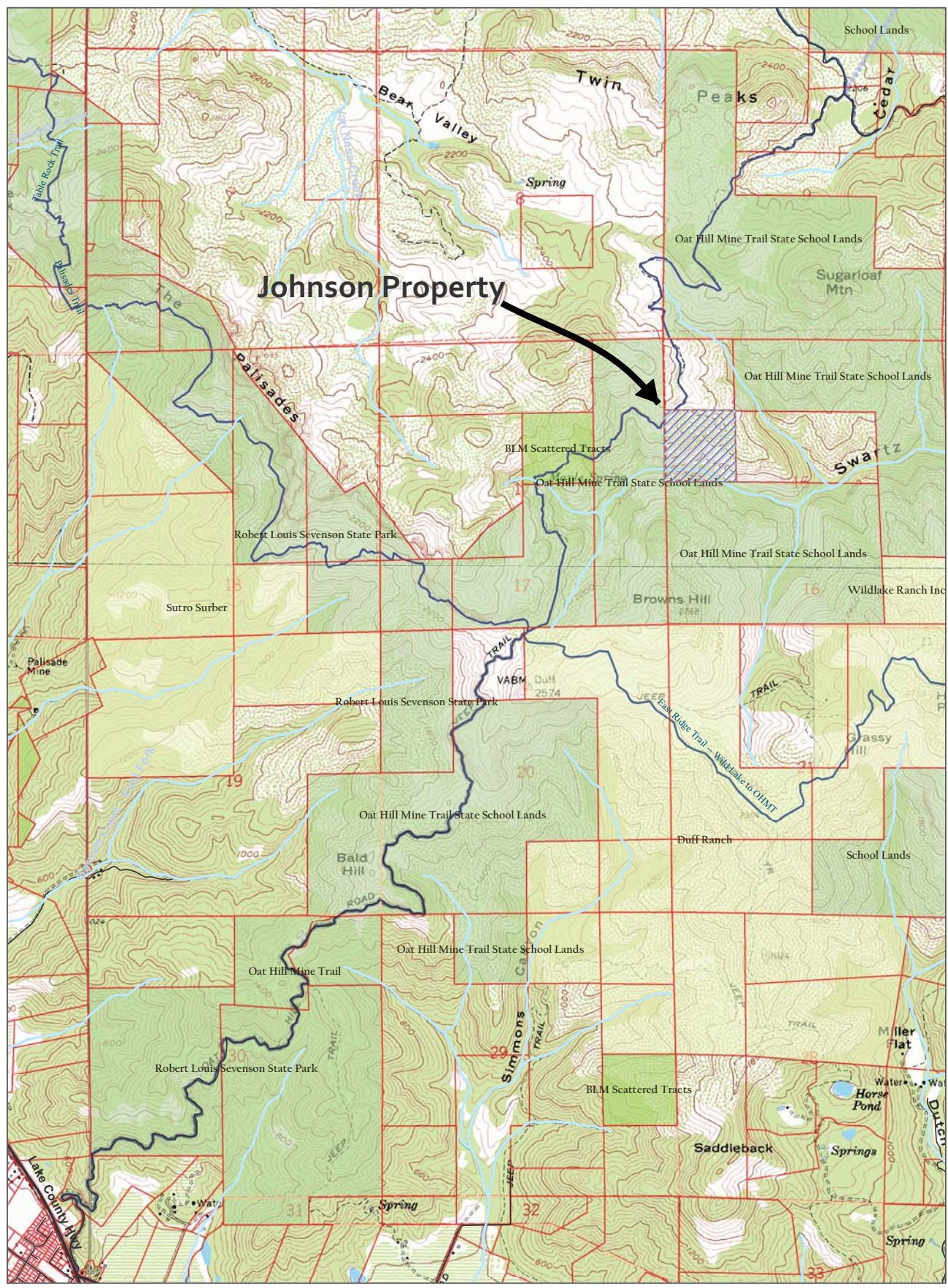
property would, however, represent a nice District foothold along the Oat Hill Mine Trail, which is one of our most heavily used facilities; it would also provide a larger buffer between the trail and adjacent private properties. While we don't have any plans for improvements or other changes on the property at the moment, in the future it could be useful as a staging area for remote trail work crews, an access point to Swartz Creek and Canyon, which runs along the property's southern edge, or as a spot for a scenic overlook.

In negotiating the donation, District staff agreed to order and cover the \$500 cost of a preliminary title report and to reimburse Ms. Johnson for the costs of an appraisal up to \$1,800. Because we would like to avoid the expense and complexity of escrow on what is otherwise a very straightforward property donation, we have also agreed to cover the parcel's December tax bill, adding up to an additional \$37.

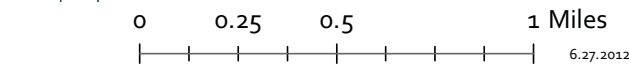
AERIAL PHOTO



Napa County Regional Park and Open Space District



Location Map Randy Lee Johnson Donation



6.27.2012

Legend

- Streams
- Parcels
- federal
- state
- city
- county
- land trust
- special district





Napa County Regional Park
and Open Space District

STAFF REPORT

By: Chris Cahill
Date: December 8, 2014
Item: 4f
Subject: Consideration and potential approval of a professional services agreement with Ron Critchley, for construction management work associated with the Camp Berryessa improvement project. Cost not to exceed \$25,000.

RECOMMENDATION

1. Find that this action is not a project under CEQA.
2. Approve a professional services agreement with Ron Critchley for a cost not-to-exceed \$25,000 and authorize the General Manager to sign all necessary documents.

ENVIRONMENTAL DETERMINATION

Not a Project. The proposed action is not a project as defined by 14 California Code of Regulations 15378 (State CEQA Guidelines) and therefore CEQA is not applicable.

BACKGROUND

As the Board may remember, you awarded a \$1,736,820 contract to G.D. Nielson Inc. for the construction of Camp Berryessa at your November meeting. At the time, staff noted that we were in negotiations with Ron Critchley, a retired Napa County engineer and experienced public works construction manager and inspector, to represent the District on site while construction is under way at the Lake. We are glad to report that Ron has agreed to take the job.

Given both the scope and cost of the Camp Berryessa project we feel that \$25,000 (or less than 1.5% of the construction bid) is a small price to pay for the peace of mind that comes with having an experienced construction manager on site dealing with requests for information, change orders, and the like. Additionally, Ron has agreed to mentor District staff (that means me/Chris) on the ins and outs of public sector construction management. Our hope is that this will build District capacity for future projects while also minimizing Ron's billable hours on this one.



Napa County Regional Park
and Open Space District

STAFF REPORT

Date: December 8, 2014
Item: 4.E
Subject: Receipt of report on expenditures, encumbrances, donations, and grants approved by District staff

Recommendation

Receive the report.

Background

Section III.A.(7) of the District By-laws authorizes the General Manager to bind the district for supplies, materials, labor, and other valuable consideration, in accordance with board policy and the adopted District budget, up to \$10,000 for non-construction purposes and up to \$25,000 for construction purposes, provided that all such expenditures are subsequently reported to the Board of Directors. Section III.A.(8) of the By-laws authorizes the General Manager to apply for grants and receive donations, subject to reporting such actions to the Board of Directors.

Attached is a report showing all District expenditures for the period of November 1 through December 2, 2014.

In addition to these expenditures, the General Manager approved the following contracts using his signature authority:

None.

Report ID: GLS7505
 Bus. Unit: NAPCG-County of Napa
 Fund: 8500 N C Parks & Open Space Distr
 Dept: 8500000Parks-Administration

GENERAL LEDGER DETAIL TRANSACTIONS
 For Fiscal Year 2015
 Period 5 to 6

Page No. 1
 Run Date 12/02/2014
 Run Time 12:59:21

Program:

Journal	Date	Journal ID	Journal Description	Voucher Desc	Reference	Vendor ID	Name	Seq	Debit	Credit	Balance	
Account	52125	-	Accounting/Auditing Services									
Total For	52125	-	Accounting/Auditing Services						0.00	0.00		
											Beginning Balance:	1,399.38
											Total Activity:	0.00
											Ending Balance:	1,399.38
Account	52140	-	Legal Services									
Total For	52140	-	Legal Services						0.00	0.00		
											Beginning Balance:	3,230.45
											Total Activity:	0.00
											Ending Balance:	3,230.45
Account	52490	-	Other Professional Services									
	11/26/2014	AP00259664	PARK070115 10/14	10/14 Services	00052013	23180	CJYIPASSOC		3,361.05	0.00		
Total For	52490	-	Other Professional Services						3,361.05	0.00		
											Beginning Balance:	7,801.16
											Total Activity:	3,361.05
											Ending Balance:	11,162.21
Account	52705	-	Insurance - Premiums									
	11/06/2014	AP00259093	Volunteers Insurance program	Acct #NAPACOU-	00049490	36310	ALLIANTINS		635.00	0.00		
Total For	52705	-	Insurance - Premiums						635.00	0.00		
											Beginning Balance:	11,641.05
											Total Activity:	635.00

Report ID: GLS7505
 Bus. Unit: NAPCG-County of Napa
 Fund: 8500 N C Parks & Open Space Distr
 Dept: 8500000Parks-Administration

GENERAL LEDGER DETAIL TRANSACTIONS
 For Fiscal Year 2015
 Period 5 to 6

Page No. 2
 Run Date 12/02/2014
 Run Time 12:59:21

Program:

Journal Date	Journal ID	Journal Description	Voucher Desc	Reference	Vendor ID	Name	Seq	Debit	Credit	Balance
								Ending Balance:		12,276.05
Account	52820	- Printing & Binding								
Total For	52820	- Printing & Binding								
								0.00	0.00	
								Beginning Balance:		555.08
								Total Activity:		0.00
								Ending Balance:		555.08
Account	52830	- Publications & Legal Notices								
Total For	52830	- Publications & Legal Notices								
								0.00	0.00	
								Beginning Balance:		269.36
								Total Activity:		0.00
								Ending Balance:		269.36
Account	52905	- Business Travel/Mileage								
11/06/2014	AP00259093	Oct 2014 mileage		00049527				107.80	0.00	
Total For	52905	- Business Travel/Mileage								
								107.80	0.00	
								Beginning Balance:		286.56
								Total Activity:		107.80
								Ending Balance:		394.36
Account	53100	- Office Supplies								
Total For	53100	- Office Supplies								
								0.00	0.00	
								Beginning Balance:		39.96
								Total Activity:		0.00

Report ID: GLS7505
Bus. Unit: NAPCG-County of Napa
Fund: 8500 N C Parks & Open Space Distr
Dept: 8500000Parks-Administration

GENERAL LEDGER DETAIL TRANSACTIONS
For Fiscal Year 2015
Period 5 to 6

Page No. 3
Run Date 12/02/2014
Run Time 12:59:21

Program:

Journal Date	Journal ID	Journal Description	Voucher Desc	Reference	Vendor ID	Name	Seq	Debit	Credit	Balance
								Ending Balance:		39.96
Account	53120	- Memberships/Certifications								
Total For	53120	- Memberships/Certifications								
								0.00	0.00	
								Beginning Balance:		1,000.00
								Total Activity:		0.00
								Ending Balance:		1,000.00
Account	53415	- Computer Software/Licensing Fe								
Total For	53415	- Computer Software/Licensing Fe								
								0.00	0.00	
								Beginning Balance:		431.46
								Total Activity:		0.00
								Ending Balance:		431.46
Account	53600	- Special Departmental Expense								
11/06/2014	AP00259093	Chino-Oct Parks expenses	Reimbursement	00049548	23180	CJYIPASSOC		84.88	0.00	
Total For	53600	- Special Departmental Expense								
								84.88	0.00	
								Beginning Balance:		799.20
								Total Activity:		84.88
								Ending Balance:		884.08
TOTAL EXPENSE								4,188.73	0.00	31,642.39

=====

Report ID: GLS7505
 Bus. Unit: NAPCG-County of Napa
 Fund: 8500 N C Parks & Open Space Distr
 Dept: 8501000Parks-Moore Creek

GENERAL LEDGER DETAIL TRANSACTIONS
 For Fiscal Year 2015
 Period 5 to 6

Page No. 4
 Run Date 12/02/2014
 Run Time 12:59:21

Program:

Journal	Date	Journal ID	Journal Description	Voucher Desc	Reference	Vendor ID	Name	Seq	Debit	Credit	Balance
Account	52325		- Waste Disposal Services								
	11/24/2014	AP00259590	United 11/12/14 - 12/9/14	Cust #CAN-0973	00051653	20925	UNITEDSITE		115.62	0.00	
Total For	52325		- Waste Disposal Services						115.62	0.00	
									Beginning Balance:		651.49
									Total Activity:		115.62
									Ending Balance:		767.11
Account	52360		- Construction Services								
Total For	52360		- Construction Services						0.00	0.00	
									Beginning Balance:		2,000.00
									Total Activity:		0.00
									Ending Balance:		2,000.00
Account	52490		- Other Professional Services								
	11/26/2014	AP00259664	PARK070115 10/14	10/14 Services	00052013	23180	CJYIPASSOC		1,157.72	0.00	
	11/26/2014	AP00259664	PARK140215 11/14	11/14 Moore Cr	00052017	35422	HERITAGESY		367.67	0.00	
Total For	52490		- Other Professional Services						1,525.39	0.00	
									Beginning Balance:		5,381.30
									Total Activity:		1,525.39
									Ending Balance:		6,906.69
Account	52525		- Maintenance-Infrastructure/Lan								
	11/06/2014	AP00259093	Chino-Oct Parks expenses	Reimbursement	00049548	23180	CJYIPASSOC		145.40	0.00	

Report ID: GLS7505
 Bus. Unit: NAPCG-County of Napa
 Fund: 8500 N C Parks & Open Space Distr
 Dept: 8501000Parks-Moore Creek

GENERAL LEDGER DETAIL TRANSACTIONS
 For Fiscal Year 2015
 Period 5 to 6

Page No. 5
 Run Date 12/02/2014
 Run Time 12:59:21

Program:

Journal Date	Journal ID	Journal Description	Voucher Desc	Reference	Vendor ID	Name	Seq	Debit	Credit	Balance
Total For 52525 - Maintenance-Infrastructure/Lan								145.40	0.00	
								Beginning Balance:		0.00
								Total Activity:		145.40
								Ending Balance:		145.40
<hr/>										
Account 52800 - Communications/Telephone										
11/24/2014	AP00259590	Hughesnet 11/12/14-12/12/14	Acct #DSS88360	00051645	17372	HUGHESNETW		76.59	0.00	
Total For 52800 - Communications/Telephone								76.59	0.00	
								Beginning Balance:		306.36
								Total Activity:		76.59
								Ending Balance:		382.95
<hr/>										
Account 52840 - Permits/License Fees										
Total For 52840 - Permits/License Fees								0.00	0.00	
								Beginning Balance:		431.00
								Total Activity:		0.00
								Ending Balance:		431.00
<hr/>										
Account 52905 - Business Travel/Mileage										
11/06/2014	AP00259093	Oct 2014 mileage		00049527				22.55	0.00	
Total For 52905 - Business Travel/Mileage								22.55	0.00	
								Beginning Balance:		0.00
								Total Activity:		22.55

Report ID: GLS7505
 Bus. Unit: NAPCG-County of Napa
 Fund: 8500 N C Parks & Open Space Distr
 Dept: 8501000Parks-Moore Creek

GENERAL LEDGER DETAIL TRANSACTIONS
 For Fiscal Year 2015
 Period 5 to 6

Page No. 6
 Run Date 12/02/2014
 Run Time 12:59:21

Program:

Journal Date	Journal ID	Journal Description	Voucher Desc	Reference	Vendor ID	Name	Seq	Debit	Credit	Balance
								Ending Balance:		22.55
Account	53100	- Office Supplies								
11/06/2014	AP00259093	Chino-Oct Parks expenses	Reimbursement	00049548	23180	CJYIPASSOC		78.84	0.00	
Total For	53100	- Office Supplies								
								78.84	0.00	
								Beginning Balance:		0.00
								Total Activity:		78.84
								Ending Balance:		78.84
Account	53205	- Utilities - Electric								
Total For	53205	- Utilities - Electric								
								0.00	0.00	
								Beginning Balance:		548.91
								Total Activity:		0.00
								Ending Balance:		548.91
Account	53250	- Fuel								
Total For	53250	- Fuel								
								0.00	0.00	
								Beginning Balance:		120.03
								Total Activity:		0.00
								Ending Balance:		120.03
Account	53350	- Maintenance Supplies								
11/13/2014	AP00259279	MC sign	Inv #11724-Nap	00050465	12797	NAPASIGNSH		43.20	0.00	
Total For	53350	- Maintenance Supplies								
								43.20	0.00	

Report ID: GLS7505
 Bus. Unit: NAPCG-County of Napa
 Fund: 8500 N C Parks & Open Space Distr
 Dept: 8501000Parks-Moore Creek

GENERAL LEDGER DETAIL TRANSACTIONS
 For Fiscal Year 2015
 Period 5 to 6

Page No. 7
 Run Date 12/02/2014
 Run Time 12:59:21

Program:

Journal Date	Journal ID	Journal Description	Voucher Desc	Reference	Vendor ID	Name	Seq	Debit	Credit	Balance
								Beginning Balance:		635.90
								Total Activity:		43.20
								Ending Balance:		679.10
<hr/>										
Account	53600	- Special Departmental Expense								
11/06/2014	AP00259093	Chino-Oct Parks expenses	Reimbursement	00049548	23180	CJYIPASSOC		198.82	0.00	
Total For	53600	- Special Departmental Expense						198.82	0.00	
								Beginning Balance:		289.84
								Total Activity:		198.82
								Ending Balance:		488.66
<hr/>										
Account	54500	- Taxes and Assessments								
Total For	54500	- Taxes and Assessments						0.00	0.00	
								Beginning Balance:		757.62
								Total Activity:		0.00
								Ending Balance:		757.62
<hr/>										
TOTAL EXPENSE								2,206.41	0.00	13,328.86

=====

Report ID: GLS7505
Bus. Unit: NAPCG-County of Napa
Fund: 8500 N C Parks & Open Space Distr
Dept: 8501001Parks-Oat Hill Mine Trail

GENERAL LEDGER DETAIL TRANSACTIONS
For Fiscal Year 2015
Period 5 to 6

Page No. 8
Run Date 12/02/2014
Run Time 12:59:21

Program:

Journal	Date	Journal ID	Journal Description	Voucher Desc	Reference	Vendor ID	Name	Seq	Debit	Credit	Balance
Account	52490		- Other Professional Services								
11/24/2014		AP00259590	First Amer Title-Prelim report	Prelim Report	00051655	12798	FIRSTAMERI		500.00	0.00	
11/26/2014		AP00259664	PARK070115 10/14	10/14 Services	00052013	23180	CJYIPASSOC		224.42	0.00	
Total For 52490 - Other Professional Services									724.42	0.00	
									Beginning Balance:		1,150.26
									Total Activity:		724.42
									Ending Balance:		1,874.68
TOTAL EXPENSE									724.42	0.00	1,874.68

Report ID: GLS7505
Bus. Unit: NAPCG-County of Napa
Fund: 8500 N C Parks & Open Space Distr
Dept: 8501002Parks-Napa River and Bay Trail

GENERAL LEDGER DETAIL TRANSACTIONS
For Fiscal Year 2015
Period 5 to 6

Page No. 10
Run Date 12/02/2014
Run Time 12:59:21

Program:

Journal Date	Journal ID	Journal Description	Voucher Desc	Reference	Vendor ID	Name	Seq	Debit	Credit	Balance
Total For 52905 - Business Travel/Mileage								0.00	0.00	
								Beginning Balance:		63.84
								Total Activity:		0.00
								Ending Balance:		63.84
<hr/>										
Account	53350	- Maintenance Supplies								
11/06/2014	AP00259093	Home depot - posts	Reimbursement	00049527	19796	WOODBURY,J		21.22	0.00	
11/06/2014	AP00259093	Central Vly - Oct 2014	Cust #NAPACORP	00049531	219	CENTRALVAL		7.65	0.00	
11/06/2014	AP00259093	Chino-Oct Parks expenses	Reimbursement	00049548	23180	CJYIPASSOC		494.08	0.00	
Total For 53350 - Maintenance Supplies								522.95	0.00	
								Beginning Balance:		343.18
								Total Activity:		522.95
								Ending Balance:		866.13
<hr/>										
TOTAL EXPENSE								95,530.08	0.00	97,567.36
=====										

Report ID: GLS7505
Bus. Unit: NAPCG-County of Napa
Fund: 8500 N C Parks & Open Space Distr
Dept: 8501003Parks-Camp Berryessa

GENERAL LEDGER DETAIL TRANSACTIONS
For Fiscal Year 2015
Period 5 to 6

Page No. 11
Run Date 12/02/2014
Run Time 12:59:21

Program:

Journal	Date	Journal ID	Journal Description	Voucher Desc	Reference	Vendor ID	Name	Seq	Debit	Credit	Balance
Account	52360		- Construction Services								
	11/07/2014	AP00259124	PARK131415 7-9/14	615	00049753	33202	PSOMAS-001		615.00	0.00	
Total For	52360		- Construction Services						615.00	0.00	
									Beginning Balance:		7,079.15
									Total Activity:		615.00
									Ending Balance:		7,694.15
Account	52490		- Other Professional Services								
	11/26/2014	AP00259664	PARK131015 10/14	10/14 Services	00052016	33782	NORTHVALLE		1,962.71	0.00	
Total For	52490		- Other Professional Services						1,962.71	0.00	
									Beginning Balance:		975.00
									Total Activity:		1,962.71
									Ending Balance:		2,937.71
Account	52840		- Permits/License Fees								
Total For	52840		- Permits/License Fees						0.00	0.00	
									Beginning Balance:		1,521.00
									Total Activity:		0.00
									Ending Balance:		1,521.00
TOTAL EXPENSE									2,577.71	0.00	12,152.86

Report ID: GLS7505
Bus. Unit: NAPCG-County of Napa
Fund: 8500 N C Parks & Open Space Distr
Dept: 8501005Parks-Napa River Ecological Rs

GENERAL LEDGER DETAIL TRANSACTIONS
For Fiscal Year 2015
Period 5 to 6

Page No. 12
Run Date 12/02/2014
Run Time 12:59:21

Program:

Journal Date	Journal ID	Journal Description	Voucher Desc	Reference	Vendor ID	Name	Seq	Debit	Credit	Balance
Account 52325 - Waste Disposal Services										
11/24/2014	AP00259590	United 11/6/14 - 12/3/14	Cust #CAN-0973	00051654	20925	UNITEDSITE		130.95	0.00	
11/24/2014	AP00259590	Upper Vly Disp - Oct 2014	Acct #01-00048	00051656	19694	UPPERVALLE		101.52	0.00	
Total For 52325 - Waste Disposal Services								232.47	0.00	
								Beginning Balance:		1,523.81
								Total Activity:		232.47
								Ending Balance:		1,756.28
Account 52340 - Landscaping Services										
Total For 52340 - Landscaping Services										
								0.00	0.00	
								Beginning Balance:		240.00
								Total Activity:		0.00
								Ending Balance:		240.00
Account 52490 - Other Professional Services										
11/26/2014	AP00259664	PARK070115 10/14	10/14 Services	00052013	23180	CJYIPASSOC		686.63	0.00	
11/26/2014	AP00259664	PARK081215 9/14	9/14 Services	00052014	24404	OPTIONS3-0		848.00	0.00	
Total For 52490 - Other Professional Services								1,534.63	0.00	
								Beginning Balance:		3,591.87
								Total Activity:		1,534.63
								Ending Balance:		5,126.50
Account 53350 - Maintenance Supplies										

Report ID: GLS7505
Bus. Unit: NAPCG-County of Napa
Fund: 8500 N C Parks & Open Space Distr
Dept: 8501005Parks-Napa River Ecological Rs

GENERAL LEDGER DETAIL TRANSACTIONS
For Fiscal Year 2015
Period 5 to 6

Page No. 13
Run Date 12/02/2014
Run Time 12:59:21

Program:

Journal Date	Journal ID	Journal Description	Voucher Desc	Reference	Vendor ID	Name	Seq	Debit	Credit	Balance
Total For 53350 - Maintenance Supplies								0.00	0.00	
								Beginning Balance:		30.00
								Total Activity:		0.00
								Ending Balance:		30.00
TOTAL EXPENSE								1,767.10	0.00	7,152.78

Report ID: GLS7505
 Bus. Unit: NAPCG-County of Napa
 Fund: 8500 N C Parks & Open Space Distr
 Dept: 8501007Parks-Putah Creek

GENERAL LEDGER DETAIL TRANSACTIONS
 For Fiscal Year 2015
 Period 5 to 6

Page No. 14
 Run Date 12/02/2014
 Run Time 12:59:21

Program:

Journal	Date	Journal ID	Journal Description	Voucher Desc	Reference	Vendor ID	Name	Seq	Debit	Credit	Balance
Account	52490		- Other Professional Services								
	11/26/2014	AP00259664	PARK070115 10/14	10/14 Services	00052013	23180	CJYIPASSOC		286.08	0.00	
Total For	52490		- Other Professional Services						286.08	0.00	
									Beginning Balance:		1,289.39
									Total Activity:		286.08
									Ending Balance:		1,575.47
Account	52840		- Permits/License Fees								
	11/13/2014	AP00259279	Water Rights fee 14/15	Acct #WR STF 0	00050442	20526	CAST-WATER		151.10	0.00	
Total For	52840		- Permits/License Fees						151.10	0.00	
									Beginning Balance:		0.00
									Total Activity:		151.10
									Ending Balance:		151.10
TOTAL EXPENSE									437.18	0.00	1,726.57

Report ID: GLS7505
Bus. Unit: NAPCG-County of Napa
Fund: 8500 N C Parks & Open Space Distr
Dept: 8501008Parks-State Parks

GENERAL LEDGER DETAIL TRANSACTIONS
For Fiscal Year 2015
Period 5 to 6

Page No. 15
Run Date 12/02/2014
Run Time 12:59:21

Program:

Journal Date	Journal ID	Journal Description	Voucher Desc	Reference	Vendor ID	Name	Seq	Debit	Credit	Balance	
Account 52325 - Waste Disposal Services											
11/06/2014	AP00259093	United 10/30/14-11/26/14	Cust #CAN-0973	00049495	20925	UNITEDSITE		486.70	0.00		
11/13/2014	AP00259279	Port restroom-special event	Bothe State Pa	00050453	27875	JOHNNYONTH		203.60	0.00		
11/13/2014	AP00259279	Upper Vly - Oct 2014	Acct #01-00134	00050455	19694	UPPERVALLE		856.95	0.00		
Total For 52325 - Waste Disposal Services								1,547.25	0.00		
										Beginning Balance:	5,888.20
										Total Activity:	1,547.25
										Ending Balance:	7,435.45
Account 52360 - Construction Services											
Total For 52360 - Construction Services								0.00	0.00		
										Beginning Balance:	1,496.61
										Total Activity:	0.00
										Ending Balance:	1,496.61
Account 52490 - Other Professional Services											
11/07/2014	AP00259124	PARK140915 10/14	10/14 Services	00049754	36609	EHLERS,JON		600.00	0.00		
11/26/2014	AP00259664	PARK081215 10/14	10/14 Services	00052015	33711	MARIONI,JE		1,163.75	0.00		
Total For 52490 - Other Professional Services								1,763.75	0.00		
										Beginning Balance:	6,887.21
										Total Activity:	1,763.75
										Ending Balance:	8,650.96

Report ID: GLS7505
 Bus. Unit: NAPCG-County of Napa
 Fund: 8500 N C Parks & Open Space Distr
 Dept: 8501008Parks-State Parks

GENERAL LEDGER DETAIL TRANSACTIONS
 For Fiscal Year 2015
 Period 5 to 6

Page No. 16
 Run Date 12/02/2014
 Run Time 12:59:21

Program:

Journal	Date	Journal ID	Journal Description	Voucher Desc	Reference	Vendor ID	Name	Seq	Debit	Credit	Balance	
Account	52520	-	Maintenance-Vehicles									
Total For	52520	-	Maintenance-Vehicles						0.00	0.00		
											Beginning Balance:	787.65
											Total Activity:	0.00
											Ending Balance:	787.65
Account	52525	-	Maintenance-Infrastructure/Lan									
	11/17/2014	0000259350	Inv #1 - #3		CT-8108				4,864.61	0.00		
Total For	52525	-	Maintenance-Infrastructure/Lan						4,864.61	0.00		
											Beginning Balance:	451.08
											Total Activity:	4,864.61
											Ending Balance:	5,315.69
Account	52800	-	Communications/Telephone									
	11/13/2014	AP00259279	Telepacific-Nov 2014	Acct #133326	00050462	34480	TELEPACIFI		566.99	0.00		
Total For	52800	-	Communications/Telephone						566.99	0.00		
											Beginning Balance:	2,229.48
											Total Activity:	566.99
											Ending Balance:	2,796.47
Account	52825	-	Bank Charges									
Total For	52825	-	Bank Charges						0.00	0.00		
											Beginning Balance:	619.97
											Total Activity:	0.00

Report ID: GLS7505
 Bus. Unit: NAPCG-County of Napa
 Fund: 8500 N C Parks & Open Space Distr
 Dept: 8501008Parks-State Parks

GENERAL LEDGER DETAIL TRANSACTIONS
 For Fiscal Year 2015
 Period 5 to 6

Page No. 17
 Run Date 12/02/2014
 Run Time 12:59:21

Program:

Journal Date	Journal ID	Journal Description	Voucher Desc	Reference	Vendor ID	Name	Seq	Debit	Credit	Balance
								Ending Balance:		619.97
Account	52840	- Permits/License Fees								
Total For	52840	- Permits/License Fees								
								0.00	0.00	
								Beginning Balance:		214.00
								Total Activity:		0.00
								Ending Balance:		214.00
Account	52905	- Business Travel/Mileage								
11/06/2014	AP00259093	10/2014	7898686642	00049385	12088	CHEVRONPRO		277.49	0.00	
Total For	52905	- Business Travel/Mileage								
								277.49	0.00	
								Beginning Balance:		1,074.19
								Total Activity:		277.49
								Ending Balance:		1,351.68
Account	53100	- Office Supplies								
Total For	53100	- Office Supplies								
								0.00	0.00	
								Beginning Balance:		531.00
								Total Activity:		0.00
								Ending Balance:		531.00
Account	53205	- Utilities - Electric								
11/24/2014	AP00259590	PG&E 10/16/14-11/14/14	Acct #48314069	00051646	945	PAC-GAS-00		66.30	0.00	
11/24/2014	AP00259590	PG&E 10/16/14-11/14/14	Acct #18690124	00051647	945	PAC-GAS-00		755.79	0.00	

Report ID: GLS7505
 Bus. Unit: NAPCG-County of Napa
 Fund: 8500 N C Parks & Open Space Distr
 Dept: 8501008Parks-State Parks

GENERAL LEDGER DETAIL TRANSACTIONS
 For Fiscal Year 2015
 Period 5 to 6

Page No. 18
 Run Date 12/02/2014
 Run Time 12:59:21

Program:

Journal Date	Journal ID	Journal Description	Voucher Desc	Reference	Vendor ID	Name	Seq	Debit	Credit	Balance
Account 53205	- Utilities - Electric									
11/24/2014	AP00259590	PG&E 10/15/14-11/13/14	Acct #67654031	00051649	945	PAC-GAS-00		36.51	0.00	
11/24/2014	AP00259590	PG&E 10/15/14-11/13/14	Acct #21728318	00051650	945	PAC-GAS-00		37.54	0.00	
Total For 53205 - Utilities - Electric								896.14	0.00	
								Beginning Balance:		5,441.06
								Total Activity:		896.14
								Ending Balance:		6,337.20
<hr/>										
Account 53210	- Utilities - Propane									
Total For 53210 - Utilities - Propane								0.00	0.00	
								Beginning Balance:		201.55
								Total Activity:		0.00
								Ending Balance:		201.55
<hr/>										
Account 53330	- Janitorial Supplies									
11/13/2014	AP00259279	C&C - supplies	Acct #60124600	00050459	34310	CASH&CARRY		275.39	0.00	
Total For 53330 - Janitorial Supplies								275.39	0.00	
								Beginning Balance:		2,692.13
								Total Activity:		275.39
								Ending Balance:		2,967.52
<hr/>										
Account 53345	- Construction Supplies/Material									
Total For 53345 - Construction Supplies/Material								0.00	0.00	
								Beginning Balance:		3,189.39

Report ID: GLS7505
Bus. Unit: NAPCG-County of Napa
Fund: 8500 N C Parks & Open Space Distr
Dept: 8501008Parks-State Parks

GENERAL LEDGER DETAIL TRANSACTIONS
For Fiscal Year 2015
Period 5 to 6

Page No. 19
Run Date 12/02/2014
Run Time 12:59:21

Program:

Journal Date	Journal ID	Journal Description	Voucher Desc	Reference	Vendor ID	Name	Seq	Debit	Credit	Balance	
								Total Activity:		0.00	
								Ending Balance:		3,189.39	
<hr/>											
Account	53350	- Maintenance Supplies									
11/06/2014	AP00259093	Brown's Auto-supplies	Acct #8537	00049493	158	BROWNSAUTO		31.61	0.00		
11/06/2014	AP00259093	Central Vly - Oct 2014	Cust #NAPACORP	00049531	219	CENTRALVAL		343.74	0.00		
11/13/2014	AP00259279	Paint Works-supplies	Bothe Park-Wri	00050443	26530	THEPAINTWO		56.18	0.00		
11/13/2014	AP00259279	Paint Works	Bothe Park-Wri	00050446	26530	THEPAINTWO		73.53	0.00		
11/19/2014	0000259458	Harvest Fest-lighting costs		STEVES'S				0.00	402.64		
								<hr/>	<hr/>		
Total For	53350	- Maintenance Supplies							505.06	402.64	
								Beginning Balance:		6,848.50	
								Total Activity:		102.42	
								Ending Balance:		6,950.92	
<hr/>											
Account	53400	- Minor Equipment/Small Tools									
11/13/2014	AP00259279	Belkorp	Bothe Park-Acc	00050450	34758	BELKORPAG-		137.85	0.00		
								<hr/>	<hr/>		
Total For	53400	- Minor Equipment/Small Tools							137.85	0.00	
								Beginning Balance:		1,324.28	
								Total Activity:		137.85	
								Ending Balance:		1,462.13	
<hr/>											
Account	53600	- Special Departmental Expense									
11/06/2014	AP00259093	S. Jones-volunteer food	Reimbursement-	00049501	33857	JONES,SAND		129.91	0.00		

Report ID: GLS7505
Bus. Unit: NAPCG-County of Napa
Fund: 8500 N C Parks & Open Space Distr
Dept: 8501008Parks-State Parks

GENERAL LEDGER DETAIL TRANSACTIONS
For Fiscal Year 2015
Period 5 to 6

Page No. 20
Run Date 12/02/2014
Run Time 12:59:21

Program:

Journal Date	Journal ID	Journal Description	Voucher Desc	Reference	Vendor ID	Name	Seq	Debit	Credit	Balance
Total For 53600 - Special Departmental Expense								129.91	0.00	
								Beginning Balance:		2,103.55
								Total Activity:		129.91
								Ending Balance:		2,233.46
<hr/>										
Account	54500	- Taxes and Assessments								
Total For 54500 - Taxes and Assessments								0.00	0.00	
								Beginning Balance:		455.35
								Total Activity:		0.00
								Ending Balance:		455.35
<hr/>										
TOTAL EXPENSE								10,964.44	402.64	52,997.00
=====										
TOTAL FOR PROGRA								118,396.07	402.64	218,442.50

Park Report for November 2014
Submitted by Ranger Sandy Jones and Jeanne Marioni

Bothe-Napa State Park

Lots of **clean up and organizing** happening in the park!

At the request of State Parks, the Konocti crew cleared brush away from around the two large water tanks in the back of the park. They also dropped two trees identified by the State as hazardous and cleaned up the brush.

Boy Scouts dismantled several deteriorated, broken picnic tables and constructed a couple good ones with the useable portions of wood. The rest of the usable wood will be stacked and saved for other projects.

Park staff cleaned out and re-organized the tool shed (in one of the old historic cabins behind the visitor center).

Our plumbing inventory has been organized and stacked on a new rack built by park staff.

With the help of one of our neighbors who volunteered his time and tractor, we were able to get some big jobs done in the park. Road base was moved, flattened and tamped down to fill in a large, low area. We moved a big log that was a tripping hazard and are now using it as a parking barrier. We moved rock in campsite #9, an ADA accessible spot, and now a wheel chair can move around fire ring. With the use of the tractor, we easily moved rock and gravel to campsite #38 and made a flat spot for the picnic table.

The State has completed the road resurfacing project and the new roof on the shop.

We have a **tractor** coming! Several members of the community responded to articles we placed in the local papers asking for help locating and buying a good, used tractor. Within a few days we had four tractors to choose from and several generous donations of money to help us buy one. One of the tractors is a Kubota in great condition with many attachments – our dream tractor! We are confident we will find the rest of the money we need and the seller is happy to work with us. The Kubota is the best holiday gift Bothe-Napa could have received!

Repairs to the Historic Cabins and the Visitor Center: The State had asked us to provide architectural drawings for the repairs to the back deck; these have been submitted. The State Fire Marshall has reviewed the projects and signed-

off. The ADA unit has approved the projects and signed-off. The PEF is currently being reviewed by the State specialists who are expected to forward their comments within the next few weeks. A CEQA determination will then be made.

Cemetery Project: We are working with one of our volunteers who offered to donate wood and the use of his portable mill to make the lumber we need to repair the fencing in the cemetery.

Our Forest Practices group enjoyed their annual get-together this month. These retired foresters also volunteered their time to drop some of the **hazardous trees** identified by the State.

Bale Grist Mill State Historic Park

The Governor vetoed our proposed legislation. The State's health inspector and the District were asked to try to come up with possible solutions. We met with the State Health Inspectors and the State resource folks to brainstorm methods of milling and food processing acceptable to the State but eliminating the bats is not feasible nor cost effective.

We are creating a new inventory and ordering system for the mill and visitor center gift shops. New cash registers have been ordered with a program that will help us keep better track of inventory. NVSPA plans to increase revenue by improving the offerings of the gift shop and keeping closer track of what is selling and what is not. We also hope to improve the quality of our interpretive items for sale, especially for children.

Thanks to the \$25,000 donation we recently received and then matched by NVSPA, we now have the lumber to repair the waterwheel stacked at Bothe. We also ordered a BIG handsaw for the project.

We are preparing for Pioneer Christmas December 6th. We continue to improve the interpretive value of the event and offer delicious cookies too!

We have new roofs on the mill and granary - cedar shingles on the granary and cedar shakes on the mill. Thanks go out to State Parks for following through on these projects paid for by the matching funds grant.

It is the time of year to think about all we have achieved this year by working together. We can be proud.



The tractor! Watch for us in next year's lighted tractor parade in Calistoga!



New Saw!



The wood!

Plan of Projects
Status Report

08-Dec-14

<u>Name of Project</u>	<u>Description</u>	<u>Status</u>
Bay Area Ridge Trail Tuteur Loop	Assignment of Tuteur Loop Ridge Trail easement from the Bay Area Ridge Trail to the District	The Bay Area Ridge Trail Council obtained a donated easement from the Tuteur family and constructed a section of Bay Area Ridge Trail adjacent to Skyline Park. The Council wishes to transfer this easement to the District. Staff for the District and Council have gathered all the relevant documents, and initiated discussion with the Tuteur family to determine if there are any issues or amendments that should be considered. Next steps are to complete legal review of the documents, make amendments if warranted, obtain the consent of the Coastal Conservancy (who funded the trail construction), and then execute the assignment. Staff will resume work on transferring the easement to the District once the option agreement for purchasing a portion of the Kirkland Ranch is executed.
Bay/River Trail -- American Canyon to Napa	An 8+ mile recreational trail between the cities of American Canyon and Napa generally following the Napa River and interior levees of associated wetlands.	Phase Two--Green Island Road to Soscol Ferry Road Questa has largely completed a revised draft PUC permit application for a public crossing of the SMART tracks. SMART, NRCA and the PUC have verbally agreed to allow the railroad crossing. LSA Associates has completed a biological survey for the Fagan Marsh area; based on the results, DFG has indicated they do not want the trail alignment to follow the levee on the north side of Fagan Marsh; District staff is reviewing the feasibility of an alternative alignment. After 4 years of back and forth, in July 2014 DFW informed the District that it would comply with the BCDC condition for public access north of Green Island Road by removing a fence and graveling the surface of the existing levee, despite concerns about this alignment expressed by the Napa County Airport and the FAA. DFW put this project out to bid in late August, <u>has awarded the bid, and is now waiting for sufficiently dry weather to do the work.</u>
	Phase Three--Soscol Ferry Road to Napa Pipe	The construction contract was awarded by the Board on September 8, 2014. The Caltrans encroachment permit and permission to use a parcel owned by Napa Redevelopment Partners as a construction staging area have been approved. The Notice to Proceed was issued on October 6, 2014. <u>Construction was completed in November 2014, pending final inspection. The project will be complete as soon as directional signs are installed and grant invoices completed.</u>
Berryessa Estates	Acquire 480 acres next to Berryessa Estates from BLM at no fee through their Recreation and Public Purpose Act procedure. Would serve as a wilderness park for local residents eventually be the northern trailhead for a trail between Berryess Estates and Pope Canyon.	The District in 2009 applied to BLM for a no-fee transfer of this property to the District for the no-fee transfer of this property; while this transfer has received conceptual approval by BLM staff, the formal approval has dragged; several meetings have been held over the past three years to try and speed to process, but BLM staff has so far had higher priorities. CDF crews did extensive fire break work in 2009 through 2011 to protect the residences next to the BLM land. The Fire Marshall and the Pope Valley Volunteer Fire Department have added a proposal to construct a fire substation on a corner of the property. The Fire Marshall has identified funding for the fire station, and the County Board of Supervisors is now strongly supportive. The District has completed the donation to the District of a small, 0.2 acre property that provides critical access to the northeast corner of the property. District staff in January 2013 met with the Napa County Fire Marshall and the the Calfire Battalion Chief for the area and agreed to jointly advocate for BLM action. In February staff talked with BLM and was assured that processing of the transfer was now beginning. BLM did a series of site visits June-August, 2013. The Bureau of Reclamation in June 2013 asserted that Reclamation has property rights such that BLM is not permitted to transfer the property. BLM is now projecting the transfer will be complete by the end of this calendar year. In late August Reclamation determined they still retained jurisdiction, but they have committed to completing the transfer in the same time frame as BLM would have. Staff has submitted additional materials to Reclamation which is now processing the permit. Reclamation provided a draft agreement to the District in February 2014 which will lead to Reclamation eventually transferring its interests in the property; District staff responded with comments to the draft in early March 2014.
Berryessa Vista	Planning and stewardship of this 224 acre wilderness park.	Volunteers working with the District have completed detailed GIS mapping showing all existing roads, creek crossings, vista points and potential campsites. Continuing damage by off-road vehicles trespassing on the property was noted. The District sent a letter was sent to all property owners in that area introducing the District, explaining the deed restriction prohibiting off road vehicles, and asking for their cooperation. Since then there has been less observed damage, although the problem is not resolved. Staff was planning on installing a gate to restrict OHV access, but this has proven infeasible. After observing more OHV damage in the summer of 2013, staff is exploring options other than a gate to prevent unauthorized OHV use. The latest plan is to install remote cameras in an attempt to determine who is causing the damage. No other work is anticipated until Lake Berryessa Trail planning is completed, as that is a key step in gaining overland access to the property. District staff has been meeting with Reclamation, their consultants and interested parties on the trail planning and prioritization. Staff in late June 2014 toured an adjacent parcel with the owner of the property; in September the owner indicated they are interested in selling the property for addition to Berryessa Vista Wilderness Park. <u>The Land Trust of Napa County has ordered the appraisal, and the District and Land Trust will coordinate on the purchase of the property, subject to approval by the Board of Directors once the appraisal is complete. Tuleyome has offered to pay for half the cost of the appraisal.</u>

<p>Blue Ridge/Beryessa Peak Trail Obtain right of way and construct trail to provide public access to extensive federal lands on Blue Ridge and to Beryessa Peak</p>	<p>Obtained donated trail easement from the Ahmann family to close gaps between existing public lands on Blue Ridge. A Negative Declaration and Use Permit hearing was approved December 16, 2009 by the County Planning Commission. An Operations and Management Plan has been approved by the property owner and the District. BLM staff on April 11th inspected the proposed trail alignment where it crosses BLM land. District and BLM staff met on August 5, 2011 to discuss BLM review of this project. BLM's biologist inspected the alignment on September 17, 2011. There have been volunteer trail building work parties have been held numerous times between 2011 and the present, and the trail is now done except for signage and a fence crossing. District staff met with Fish and Game on June 15, 2012 to discuss signage at the trailhead on DFG property, and in November 2012 submitted signage language for DFG review. Staff contacted DFG (now DFW) in February of 2013, again in early April, and again in late summer to determine the status of their review. In January 2014 DFW staff responded with an alternative entry sign design, and accepted our fence stile design. Volunteers installed the fence stile in March 2014. The trail can be officially opened as soon as DFW approves the sign design.</p>
<p>Camp Berryessa Redevelopment of former Boy Scout Camp into a group/environmental education camp.</p>	<p>CEQA and NEPA review is complete, as is the Use Agreement between the District and Reclamation. A grant for \$50,000 to help with construction has been provided by the Mead Foundation, together with a \$1.5 million grant from the State Coastal Conservancy. A new water well was dug in October 2012--production is great, and quality is acceptable with minor treatment. Reclamation completed their review of the 90% plans and had a very positive meeting with District staff in late March 2014. The 100% plans were submitted to the District and Reclamation in early July 2014 and were verbally ok'd in mid August. To meet budget constraints, work on the planned black water leach field will be deferred to phase two or it may be deleted altogether. <u>A \$1.7m construction contract was awarded to G.D. Nielson Inc on Napa in November 2014 and Ron Critchley, a retired County engineer, has agreed to serve as our construction manager & inspector on the project. District staff had a kickoff meeting with G.D. Nielson on December 2nd at which it was decided not to break ground until April 1st in order to avoid the uncertainties and potential costs associated with attempting to build over what looks to be a wet winter. Under the revised schedule construction will be complete in mid to late fall 2015.</u> The Coastal Conservancy has agreed to extend the grant until January 1, 2016, giving us a little bit of breathing room on what would otherwise have been an exceptionally tight construction schedule.</p>
<p>District Non-profit Foundation Organize a non-profit foundation to raise funds for District projects</p>	<p>The District Board has approved the goals, objectives and basic structure for a non-profit foundation to assist the District with fundraising. Formation of the foundation will likely be timed to the opening of Camp Berryessa.</p>
<p>Lake Hennessey North Shore Trails Would open up several miles of existing dirt access road, and construct approximately 1 mile of new single track trail, into a loop trail system on the north side of Lake Hennessey, and connecting to the planned Moore Creek Open Space Park trail system.</p>	<p>In November, 2009 the Napa City Council directed city staff to work with the District to finalize an agreement for the proposed Hennessey trails. The District approved a Mitigated Negative Declaration on February 14, 2011. A final lease agreement and operations plan was approved by the District Board in August 2012, and by the City Council in September 2012. Work was completed on the connector trail to Moore Creek in June 2013 and public response to the new trail has been very positive. A plan for fencing and signage improvements along the Hennessey north shore has been accepted by the Director of the Water Division. Installation of City-required fencing was completed in mid-April of 2014 and a crew of 12 hearty volunteers completed the installation of required signage and two kiosks on the weekend of May 17th. Volunteers in August installed wayfinding signs and improved a horse trough, and on September 13, 2014 removed a defunct suspension bridge, as part of our agreement with the City of Napa. Some signs still need to be designed and installed. Lake Hennessey North Shore Trails formally opened with a ribbon cutting on October 18, 2014. <u>We hope to construct our first new trail segment at Lake Hennessey in March or April 2015.</u></p>
<p>Moore Creek Park Development Development of open space park on 673 acres acquired by the District adjacent to City of Napa watershed lands at Lake Hennessey to protect habitat, provide recreational trails, and overnight camping facilities.</p>	<p>The park opened on June 30, 2013. The eastern boundary survey and fencing project was completed June 2014. Construction of the remainder of the Valentine Vista Trail was completed by the Forest Trails Alliance in April 2014. With the help and support of the County Fire Department and County communications technicians, the District has installed an emergency communications radio and antenna at the Ranch House (which has neither landline nor cellular phone service). <u>The next big project is the construction of the Madrone Trail, a roughly 2 miles footpath on the western side of Moore Creek canyon north of the ranch house; staff is working on scheduling a large volunteer work party in May 2015 to begin this construction.</u></p>
<p>Oat Hill Mine Trail Various improvements to the historic Oat Hill Mine Road</p>	<p>The litigation holding up this project has been successfully concluded. Several of the trail sign posts have been vandalized and will need to be replaced. The District is continuing to work with Tuleyome on a project to clean up the Twin Peaks and Corona Mines, in the hopes this may enable the District to safely open the northern Oat Hill Mine Trail for public use. A volunteer crew did erosion control work on the trail in January 2013. Staff and volunteers in February 2013 to did a comprehensive evaluation of erosion issues on the trail, and experts from the RCD joined staff for another evaluation in early April. The City of Calistoga and CalTrans have restarted discussions about constructing a roundabout at the intersection of Highway 29 and Silverado Trail; the District is tracking these discussions to ensure that whatever design as adopted will provide adequate and safe access to the Oat Hill Mine Trail. The Bay Area Ridge Trail did some cleanup and minor improvements in late October 2013 to the staging area, and the lower 4 miles of the OHMT was dedicated as part of the Ridge Trail on November 10, 2013. <u>Acceptance of the donated Randy Lee Johnson property is slated to be complete by the end of calendar 2014.</u></p>
<p>Oat Hill Mine Trail Transfer of 40 acre parcel from BLM</p>	<p>The District in 2008 applied to BLM for a non-fee transfer to the District of a 40 acre parcel at Maple Springs on the Oat Hill Mine Trail; this application is pending. Staff met with BLM in February 2011 to discuss how to speed up this transfer; another meeting with the same topic was held August 5, 2011. The District is still waiting on BLM to process the application.</p>
<p>Rector Ridge/Stags Leap Ridge Trail Construction of staging area and 6+ miles of Ridge Trail climbing east from Silverado Trail near Rector Creek.</p>	<p>CEQA on this project was completed several years ago--staff has prepared a draft update to the Negative Declaration due to the passage of time since the original approval. The project concept has been approved by the District Board, and was positively viewed by the Veterans Home administration. However, Veterans Home staff had been having difficulty figuring out what approval process is needed, because of ongoing discussions at the state level about the appropriate roles and future programs for the Veterans Home, and then key management staff at the Veterans Home retired in November 2010, so progress was delayed pending the filling of their vacant positions. The District will restart the process when other project priorities are under control.</p>

Sklvine Park Protection Permanent protection of Skyline Park	<p>Three past legislative efforts to authorize sale to the County failed due to unrelated disagreements between the state legislature and administration. Separately, the County in September 2009 approved a new park overlay zone and an updated Master Plan for Skyline Park. A fourth legislative effort by Assemblymember Evans in 2010, sponsored by Napa County and supported by the District, was approved by the legislature and signed by the Governor. The County and state General Services agreed on an appraisal process for determining the fair market value purchase price, the County retained an appraiser acceptable to the State, and a draft appraisal was prepared. In late April 2012 the state indicated they did not accept the value as determined by the appraisal and negotiations stalled. A Draft EIR was released in late September 2013 for the proposed expansion of the adjacent Syar Quarry. The District Board approved comments on the DEIR at it's October 2013 meeting. <u>The Final EIR was released in November of 2014, with the hearing planned for early January, 2015.</u></p>
Spanish Valley, Crystal Flats, and Stone Corral Planning for open space donated by Bob and Evalyn Trinchero	<p>The District took full possession of the properties on January 1, 2012. Staff met with key community leaders from Lake Berryessa Estates on February 6 and March 6, 2011. A public session was held April 21st at the Pope Valley Farm Center. The District has negotiated an easement across the District's Stone Corral property to resolve one of the clouds on the title to this land; this easement was approval by the Board at its October meeting, and has now been finalized and recorded. Staff met with the LBEPOA Board many times in 2011-2013 to discuss use of the Crystal Flats and Stone Corral areas. District staff has prepared a draft agreement between the District and the Association, which the Association has informally rejected. The well serving Spanish Valley was repaired in November 2013. The District also sealed up an abandon dry well bore discovered on the property. A group of 10 boyscouts GPS'd old ranch roads and 4-wheel drive tracks on the Spanish Valley property for us over the weekend of April 26-27 so that we can create a map of existing roads and trails. A contract for archeologiical surveying (a required part of the CEQA process) was completed by Tom Origer and Associates in in June, 2014. Staff completed a preliminary survey of the Spanish Valley access road in late July 2012 and, while legal access to the property has been established, it does not appear that the existing road is located within the Spanish Valley Trail easement. In early January 2014 staff learned the affected parcels are for sale. Staff's cash offer to purchase half of the property in mid March was rejected and we have decided to be patient while the property owner attempts to find a better buyer (as we think it unlikely that there is one). In February 2013 several no trespassing signs were installed in response to some evidence of illegal OHV use. The Crystal Flats sign was immediately removed and the lock on the gate removed; a more secure temporary lock has been installed, and staff is researching a new gate that will exclude ATVs and motorcycles while allowing hikers, bicyclists and equestrians. The District is partnering with Tuleyome to investigate and come up with the trail alignment connecting Spanish Valley to the Pope To Putah Trail on BLM land which is under construction by Tuleyome. An abandoned trailer in Spanish Valley was removed in July 2014 at no cost to the District using an abandoned vehicle program administered by the County. The Butts Canyon fire did not reach District property, but CDF graded several emergency roads and firebreaks through Spanish Valley. CDF did some remediation work after the fire to address grading damage.</p>
State Parks Operate Bothe-Napa Valley State Park and the Bale Grist Mill State Historic Park	<p>The District, with assistance from the Napa Valley State Parks Association took over management of the parks on April 1, 2012. A County permit for the pool was obtained in July and the pool was reopened immediately thereafter. The state completed installing 3 yurts in October 2012. The District has installed 7 additional yurts. Numerous volunteer projects have been organized (PG&E event improving the Mill, firewood splitting, hazardous tree removal, mowing, pool cleaning, native plant garden maintenance, historic orchard restoration, lots of trash removal, and in September/October a footbridge on the History Trail was repaired by the St Helena Kiwanis). A volunteer forestry management group has been formed and the District has acquired a boom truck and other equipment in support of their mission. Utility service accounts have been transferred from the state to the District. Work on an improved recycling system is nearly complete. Every septic tank in the park has been pumped clean, and sewer lines were located and cleared of root blockages. Two additional failed septic tanks were discovered in March and pumped clean. Nearly \$270,000 in gifts, grants and pledges have been obtained to assist with improvements at the parks. The District and State Parks have finalized an agreement regarding the "found" state money that provides up to \$537,800 in State funds being granted to the District to cover some salaries and two capital improvement projects (replacement roofs and AC overlay to the picnic area road). The deadline for using these funds was extended in June 2014, so the District will have time to fully utilize the grant. The District is sponsoring SB 170 (Wolk) which would exempt the mill from state food processing facility requirements so that flour from the mill can be sold as a food item; the bill has passed the Senate and all Assembly committees, but unfortunately in late July 2013 the Department of Public Health announced their opposition to the bill. After meeting with DPH, it appears they may be willing to agree to a workable compromise; this will take time to explore, so we have made the bill a two-year bill. Staff will be meeting with the author and Governor's office staff in late July. A contract to prepare architectural plans for the repair of the cabins was awarded in December 2013; the plans were submitted in February 2014 for State Parks approval. In March 2014 the district was approached by several organizations and individuals requesting that the District consider taking over management of Robert Louis Stevenson State Park; after approval from the Board, staff in June 2014 submitted a proposal to State Parks to manage some aspects of RLS; this proposal has received favorable response from the District Superintendent and her immediate superiors, and is now being reviewed by others within State Parks. A free admission day including the dedication of the Ridge Trail/Vine Trail junction was held on July 27, 2014. <u>State-grant funded roof repairs and day use area roadways was completed in November 2014.</u></p>
Vallejo Lakes Possible purchase of 1100 acres of surplus Vallejo Water District lands, of which 200 acres are located in Napa County	<p>Discussions between the District, the Land Trust of Napa County, the County of Solano and the Solano Land Trust indicate a common desire to work together to purchase this property adjacent to Skyline Park. The City Council of the City of Vallejo has officially authorized staff to pursue surplusing of the property. The City of Vallejo has hired an appraiser to prepare an estimate of the property's fair market value, but this has not yet been released. The District GM, together with the County of Solano EO, in February 2012 each sent letters to the City of Vallejo formally expressing interest in the property and requesting notification per state law of any planned surplusing of the property. Sale of the property by the City has been delayed because of complications related to questions about how best to supply water to residents in Green Valley. The Trust for Public Land has expressed interest in assisting with the purchase of this area. Staff from the District and its partners met with the Vallejo City Manager in April 2014; the surplusing process has become more complicated and the City does not anticipate any action in the near future, but meanwhile the City Manager appears open to working with us to figure out a mutually beneficial outcome. Staff had a very interesting meeting with City of Vallejo water division staff and a tour of Lake Curry in late May. The Lake Curry property can only be described as a jewel, and the City of Vallejo would clearly like to divest it. District staff is presently exploring a broad array of options, from an agreement under which the City would retain title and responsibility for the water system while the District would take over land magament at the lake to outright purchase of the property by the District or its partners.</p>
Vine Trail A Class I bicycle/pedestrian path extending from Calistoga to the Vallejo Ferry Terminal sponsored by the Vine Trail Coalition, of which the District is a participating member.	<p>The District has entered into an MOU with the Vine Trail Coalition to provide assistance as requested by the Coalition in receiving funds, preparing plans and environmental documents, constructing and operating the trail. The District, the Bay Area Ridge Trail, the San Francisco Bay Trail and the Vine Trail Coalition have prepared a joint Case Statement for the combined trail network for fundraising purposes. The District on February 5, 2010 submitted an appropriations request for FY 2011 to Senator Feinstein, and a similar request to Congressman Thompson on February 26, 2010 on behalf of the Vine Trail Coalition. The District in April 2013 approved and sent a letter of support for the City of Calistoga's request for a grant from the Coastal Conservancy to plan the trail through Calistoga. The Board President in early June 2014 sent a letter of support for a Vine Trail federal "Tiger" grant to help construct the section of trail between Yountville and Napa. The District continues to coordinate with the Vine Trail on plans to route the Vine Trail through Bothe-Napa Valley State Park. A joint Vine Trail/Ridge Trail dedication event was held at Bothe on July 27, 2014.</p>

Completed Projects

Bay Area Ridge Trail Realignment	In December of 2012 the Bay Area Ridge Trail Council approved the proposed realignment of the Ridge Trail through Napa County as requested by the District.
Amendment to the proposed alignment of the Bay Area Ridge Trail extend north to the Oat Hill Mine Trail	
Bay/River Trail -- American Canyon to Napa Phase I	Construction of approximately 5 miles of Class I bicycle and pedestrian path in the vicinity of American Canyon along the Napa River was completed in April 2012, in partnership with the City of American Canyon, Department of Fish and Game and Napa Vallejo Waste Management Authority. A formal opening ceremony was held June 2, 2012.
Phase One--Euclptus Drive to Green Island Road	
Berryessa Vista Acquisition	Purchase of 224 acres from the Land Trust of Napa County for use as a public park completed in early 2008 using State Prop 12 funds.
Connolly Ranch	Construction of patio, restrooms and cooking facilities completed in 2008 using State Prop 12 funds.
Oat Hill Mine Trail	The Oat Hill Mine Trail was formally opened in May Of 2008, after a major volunteer work party doing signage installation, brush removal and erosion control.
Historic ROW Analysis	Staff has completed a comprehensive review of historic rights-of-way, and is now focusing attention on those which have greatest potential.
Study to determine location and status of historic road Rights-of-Way and whether they have value as non-motorized recreational trails	
Linda Falls	Conservation easement accepted in spring 2008 from Land Trust of Napa County to provide additional protection for this 39 acre property, which is owned by the land trust
Master Plan Development	The Master Plan for 2008-2013 was approved in January 2009
Master Plan Update	Board adhoc committee appointed. Methodology for doing update has been agreed upon. Project was delayed due to competing demands on staff time (primarily the effort to keep Napa's state parks from closing. A draft update has been prepared by staff working with the Board ad hoc committee for the Master Plan update, and released by the Board at the April 9, 2012 meeting for public comment. The plan update was adopted by the Board at its June 2012 meeting.
First scheduled update to the Master Plan adopted in January 2009	
Milliken Reservoir Trails and Picnic Area Feasibility Study	The feasibility study has been completed, and accepted by the Board of Directors. The Napa City Council in November, 2009 approved city staff recommendation to hold off on the Milliken Reservoir trails project until the Hennessey trail project is up and running.
Would construct approximately 3 miles of Bay Area Ridge Trail plus additional feeder and loop trails, along with a staging and picnic area	
Moore Creek Open Space Park	Acquisition of 673 acres in the Moore Creek Watershed completed in December 2008.
Napa River Ecological Reserve Improvements	Parking area paved, and rock barrier installed to control vehicular access in 2007. Trash enclosure constructed and entry signs restored by volunteers in 2008. Deteriorated kiosk removed in 2008. The District in July 2008 assumed the County's role in managing the preserve under the joint management agreement with DFG. A new maintenance contract with the non-profit organization Options 3 was started in January 2009. The old deteriorated information kiosk, which had become a serious eyesore, was removed in November 2008.
Napa River Ecological Reserve Restoration	This multi-year project resulted in the removal of the bulk of the invasive teasel that had taken over the 5 acre meadow at the entrance to the Reserve, and the construction of a short native plant interpretive trail. Work was done by volunteers, students, and paid contractors. In doing this work, several thousand students received a day of environmental education about native and invasive plants and riparian ecology.
Napa River Flood Control Easement	Conservation easement accepted by District in 2007 to facilitate Flood District project and grant funding
Newell Preserve Improvements	As part of the arrangement with the land trust on the District's purchase of Berryessa Vista, the land trust was willing to use some of the proceeds from the transaction to fund a well pump and distribution system at the Preserve. However, the first well drilled by the City of American Canyon came up dry. The City has dropped plans for digging any more test wells.
Provide on-site water supply for group campground for cattle	
River to Ridge Trail Enhancements	Installation of animal silhouettes along the entryway fence illustrating the types of birds and mammals that can be found in the area completed by Eagle Scout candidate in 2008. In November 2008 five Valley Oak trees were planted at the Highway 221 entrance to the trail with the assistance of a volunteer from CNPS.
River to Ridge Trail	Deeds accomplishing the adjustment in property boundaries between Syar and the State have been recorded.
Lot line adjustment to legalize River to Ridge Trail as constructed (it curenly encroaches on private	
River to Ridge Trail Entrance Enhancements	A new information kiosk was installed at the entrance in December 2008 as part of a Boy Scout project. Several Live Oak seedlings were donated by CNPS and have been planted at the entrance to improve its appearance.

River to Ridge Trail	Correct drainage problems to trail can be used year-round.	Two volunteer work weekends in March and April and two more in May of 2010 were organized by the District to clear brush, improve drainage, and surface about 300 feet of the trail with quarry fines to control problems with mud. Volunteers completed additional work in August 2011.
Skyline Park Road and Trail Improvements	Erosion control work on Lake Marie Road, and paving of campground loop road, completed in 2007 using State Prop 12 funds.	
Skyline Park Concessionaire Agreement Renewal	District staff negotiated renewal of concessionaire agreement on behalf of the County. The renewal involved changes to the fee schedule and amendments to and approval of subagreements with three non-profit partner organizations.	
Skyline Park Trail Improvements	Major volunteer event to reroute and repair trails	Staff worked with SPCA and V-O-CAL to sponsor a weekend work party on October 15-17, 2010. Approximately 110 volunteers worked to reroute and repair trails experiencing serious erosion problems. SPCA is donating \$1,000 toward expenses.
Skyline Park Facility Improvements	Partner-sponsored improvement include a second greenhouse and a covered equestrian arena.	The proposals for a second greenhouse and a covered arena were approved by the Department of General Services and by the County Board of Supervisors. The sponsors of these projects are now raising funds for implementation.
South Napa Wetlands Habitat Area	Transfer to the District those wetlands owned by the Napa County flood control district between the Napa River, Highway 29 and Newport Drive for use as habitat and nature-based recreation.	Transfer was approved in concept by the flood control district, and Park District staff prepared the first draft of a transfer agreement. Subsequently, attorney's for the flood district concluded it would be better from their perspective for the flood district to retain ownership of the property, due to their ongoing maintenance obligations.
State Parks	Assume management of Bothe-Napa Valley State Park and keep it and the Bale Grist Mill open	The District took over operations of the parks on April 1, 2012, and have a 5 year agreement with the State to continue operating the parks.
Trichero Open Space Acquisition	Donation of 3,400 acres of open space to the District by Bob and Evalyn Trinchero	The donation was completed on December 29, 2010. A related granting of an access easement to the Lake Berryessa Resort Improvement District was completed in mid-January 2011.
Wild Lake Ranch	Assist land trust with planning and possible joint management of trails, camping and picnic areas.	The District participated in the development of a strategic plan for the property, together with other public lands in the area, that was led by the Land Trust of Napa County. The land trust has decided, at least for the near term, to manage the Wildlake-Duff property itself.