



**Napa County Regional Park
and Open Space District**

Karen Turjanis
Director, Ward One

Tony Norris
Director, Ward Two

Michael Haley
Director, Ward Three

Dave Finigan
Director, Ward Four

Barry Christian
Director, Ward Five

AGENDA

BOARD OF DIRECTORS REGULAR MEETING

Monday, October 13, 2014 at 2:00 P.M.

NCTPA, 625 Burnell Street, Napa, CA 94559

NOTE SPECIAL LOCATION

General Information

Agenda items will generally be considered in the order indicated below, except for Set Matters, which will be considered at the time indicated. Agenda items may from time to time be taken out of order at the discretion of the President.

The meeting room is wheelchair accessible. Assistive listening devices and interpreters are available through the District Secretary. Requests for disability related modifications or accommodations, aids, or services may be made to the Secretary's office no less than than 48 hours prior to the meeting date by contacting 707.259.8603.

Any member of the audience desiring to address the District on a matter on the Agenda, please proceed to the rostrum and, after receiving recognition from the President, give your name, address, and your comments or questions. In order that all interested parties have an opportunity to speak, please be brief and limit you comments to the specific subject under discussion. Time limitations shall be at the discretion of the President.

State law requires agency officers (Directors and Officers) to disclose, and then be disqualified from participation in, any proceeding involving a license, permit, or other entitlement for use, if the officer has received from any participant in the proceeding an amount exceeding \$250 within the prior 12 month period. State law also requires any participant in a proceeding to disclose on the record any such contributions to an agency officer.

All materials relating to an agenda item for an open session of a regular meeting of the Board of Directors which are provided to a majority or all of the members of the Board by Board members, staff or the public within 72 hours of but prior to the meeting will be available for public inspection, on and after at the time of such distribution, in the NCRPOSD Office at 1195 Third Street, Suite 210, Napa, California 94559, Monday through Friday, between the hours of 8:00 a.m. and 4:30 p.m., except for County holidays. Materials distributed to a majority or all of the members of the Board at the meeting will be available for public inspection at the public meeting if prepared by the members of the Board or County staff and after the public meeting if prepared by some other person. Availability of materials related to agenda items for public inspection does not include materials which are exempt from public disclosure under Government Code §§6253.5, 6254, 6254.3, 6254.7, 6254.15, 6254.16, or 6254.22.

1. Call to Order and Roll Call

2. Public Comment

In this time period, anyone may address the Board of Directors regarding any subject over which the Board has jurisdiction but which is not on today's posted agenda. In order to provide all interested parties an opportunity to speak, time limitations shall be at the discretion of the President. As required by Government Code, no action or discussion will be undertaken on any item raised during this Public Comment period.

3. Set Matters

None

4. Administrative Items

- a. Consideration and potential approval of Minutes of the Board of Directors regular meeting of September 8, 2014 and Minutes of the special meeting of September 25, 2014.
- b. Consideration and potential adoption of resolution supporting the proposal by Congressman Thompson to establish the Berryessa Snow Mountain National Monument.
- c. Receipt of report on expenditures, encumbrances, donations, and grants approved by District staff.
- d. Receipt of monthly report for Bothe-Napa Valley State Park and the Bale Grist Mill State Historic Park.
- e. Review of the District Projects Status.

5. Announcements by Board and Staff

In this time period, members of the Board of Directors and staff will announce meetings, events, and other matters of interest. No action will be taken by the Board on any announcements.

6. Agenda Planning

In this time period, members of the Board of Directors and staff will discuss matters for possible consideration at future meetings. Other than to determine whether and when such matters should be agendized, no action will be taken by the Board on these items unless specifically noted otherwise.

Next Board Meeting: Regular Board Meeting of November 10, 2014, 2 pm, at NCTPA
 Moore Creek Park Lake Hennessey Unit Ribbon Cutting: October 18, 2014
 Myrna Abramowicz Commemorative Rock Dedication: November 8, 2014, 10 am
 Park & Open Space District Advisory Committee Field Trips: Oct 31 & Nov 5, 11 am
 Park & Open Space District Advisory Committee Meeting: Nov 6, 2014, 2 pm

7. Adjournment



**Napa County Regional Park
and Open Space District**

Karen Turjanis
Director, Ward One

Tony Norris
Director, Ward Two

Michael Haley
Director, Ward Three

Dave Finigan
Director, Ward Four

Barry Christian
Director, Ward Five

MINUTES

BOARD OF DIRECTORS SPECIAL MEETING

Monday, September 8, 2014 at 2:00 P.M.

NCTPA, 625 Burnell Street, Napa, CA 94559

1. Call to Order and Roll Call

Directors present: Karen Bower-Turjanis, Michael Haley, Barry Christian, Tony Norris and Dave Finigan.

Staff present: John Woodbury, Chris Cahill and Melissa Frost.

2. Public Comment

None

3. Set Matters

None

4. Administrative Items

- a. Consideration and potential approval of Minutes of the Board of Directors regular meeting of August 11, 2014.

TN-MH-KBT-BC-DF

- b. Approval of Board of Directors' Certification that there were not more candidates than offices to be elected.

Directors voted to Find that the proposed amendment is not a project under CEQA and approved Certification that there were not more candidates than offices to be elected for the November 4, 2014 General Election.

TN-MH-KBT-BC-DF

- c. Consideration and potential approval of appointments to the Park and Open Space District Advisory Committee.

Directors voted to find that the proposed amendment is not a project under CEQA and appointed Karen Chang to represent the City of Calistoga, and Roberta Oswald to represent the City of St. Helena.

MH-TN-BC-KBT-DF

- d. Consideration and potential approval of By-laws for the Park and Open Space District Advisory Committee.
 Directors voted to find that the proposed action is not a project under CEQA and approved the recommended By-Laws.
 TN-KBT-BC-MH-DF
- e. Consideration and potential award of contract for construction of the Napa River and Bay Trail Segments 7 & 8 with C. Hardy General Engineering Contractor, Inc. in the amount not to exceed \$249,805.
 Directors voted to authorize the General Manager to execute a contract with C. Hardy General Engineering Contractor, Inc. in the amount not to exceed \$249,805 to construct the Napa River and Bay Trail Segments 7 & 8, subject to submittal and staff approval of required work schedule, insurance certificate, and performance, and labor and materials bonds.
 TN-BC-KBT-MH-DF
- f. Consideration and potential approval of agreement with Questa Engineering to perform construction management services for the Napa River and Bay Trail Segments 7 & 8, in an amount not to exceed \$35,100, and amendment to the District budget for FY 2014-15 by moving \$35,000 from the District's fund balance to Napa River and Bay Trail Park Operations and Improvements.
 Directors voted to find that the proposed agreement is not a project under CEQA, authorized the General Manager to enter into a Professional Services Agreement with Questa Engineering to perform construction management services for the Napa River and Bay Trail Segments 7 & 8 project, and move \$35,000 from the District's fund balance to Napa River and Bay Trail Park Operations and Improvements.
 MH-TN-BC-KBT-DF
- g. Receipt of report on expenditures, encumbrances, donations, and grants approved by District staff.
 Directors received the report. No action taken
- h. Receipt of monthly report, and summary of accomplishments since April 2012, for Bothe-Napa Valley State Park and the Bale Grist Mill State Historic Park.
 Directors received the report. No action taken
- i. Review of the District Projects Status.
 John Woodbury gave the report with discussions on; Napa River Bay Trail, Camp Berryessa, Lake Hennessey North Shore, Moore Creek, Skyline Park, Spanish Valley and Vallejo Lakes.

5. Announcements by Board and Staff

- Barry Christian announced the Ridge Trail 25th Celebration will be on October 19, 2014.

6. Agenda Planning

- Moore Creek Park Lake Hennessey Unit Ribbon Cutting: Saturday, October 18, 2014
- Myrna Abramowicz Commemorative Plaque Dedication: TBD

7. Adjournment

Adjourned to the Regular Board Meeting of October 13, 2014.

DAVE FINIGAN, Board President

ATTEST:

MELISSA FROST, District Secretary

Key

Vote: MH = Michael Haley; TN = Tony Norris; BC = Barry Christian; DF = David Finigan; KBT= Karen Bower Turjanis

The maker of the motion and second are reflected respectively in the order of the recorded vote.

Notations under vote: N = No; A = Abstain; X = Excused



Napa County Regional Park
and Open Space District

STAFF REPORT

Date: October 13, 2014
 Agenda Item: 4.B
 Subject: Consideration and potential adoption of resolution supporting the proposal by Congressman Thompson to establish the Berryessa Snow Mountain National Monument.

Recommendation

1. Find that the proposed agreement is not a project under CEQA
2. Adopt the proposed resolution supporting the proposal to Congressman Thompson to establish the Berryessa Snow Mountain National Monument

ENVIRONMENTAL DETERMINATION

The proposed action is not a project as defined by 14 California Code of Regulations 15378 (State CEQA Guidelines) and therefore CEQA is not applicable.

Background

The Board of Directors on May 8, 2012 adopted a resolution supporting legislation by Congressman Thompson to establish the Berryessa Snow Mountain National Conservation Area (NCA). Since then, despite broad support for the proposed NCA, the potential for legislative action at this time appears limited due to political gridlock in Washington, D.C. Therefore, Congressman Thompson and supporters are now seeking a Presidential declaration establishing the area as a national monument. The same purposes, authorities and restrictions that were proposed in the draft legislation that would have created the NCA, would also apply to the proposed national monument.

A proposed resolution of support is attached, together with a copy of the draft legislation showing the purposes, authorities and restrictions that were proposed for the NCA, a map of the proposed national monument boundaries, and a list of supporters. Staff does not have any list of opponents, but is generally aware that some people are opposed due to fears that designation of federal lands as a national monument could adversely impact private property uses and values. Staff believes the draft legislation clearly indicates that designation would have no regulatory effect on non-federal lands.

Note the draft resolution conditions support on a clarification that transfers of federal land to local agencies under the Recreation and Public Purposes (R&PP) Act would still be permissible. The

District currently has one active R&PP application pending with the Bureau of Land Management and the Bureau of Reclamation for the transfer to the District of 480 acres of federal land adjacent to the District's Spanish Valley holdings. Supporters of the national monument designation have indicated they have no objection to this limited exemption from the proposed prohibition on the disposition of federal lands within the national monument.

RESOLUTION NO. _____

**A RESOLUTION OF THE BOARD OF DIRECTORS
OF THE NAPA COUNTY REGIONAL PARK AND OPEN SPACE DISTRICT
SUPPORTING THE PROPOSED
BERRYESSA SNOW MOUNTAIN NATIONAL MONUMENT**

WHEREAS, the non-profit land conservation organization Tuleyome, together with supportive business owners, elected officials, private landowners, and other community members seek to permanently protect the Berryessa Snow Mountain federal public lands in Napa, Yolo, Solano, Lake and Mendocino counties as a National Monument and has approached the Napa County Regional Park and Open Space District for a resolution of support; and

WHEREAS, it is in the interest of Napa County to permanently preserve both nearby public land, including the Cedar Roughs Wilderness, the Knoxville Recreation Area, the Lake Berryessa Recreation Area and all other parcels of federal land within the Berryessa Snow Mountain region of the county, as well as those public lands outside the boundaries of the county for the protection of our region's vast watersheds, wildlife habitat and outdoor recreation opportunities; and

WHEREAS, there are various single parcels of federal public land within the BSM lands in Napa County that are important to protect as wildlife habitat as well as being integral to plans for a county-wide trail system, that have recently been threatened with inclusion on a federal surplus land list, which was successfully opposed by local public agencies and private organizations active in the area, and that National Monument designation is needed to permanently protect, and

WHEREAS, National Monument designations have been shown to help communities diversify their economies and increase tourism, thereby generating economic benefits for nearby communities through local employment and tax revenue; and

WHEREAS, National Monument designation would permanently protect some of the most biologically diverse public land in the nation, from the oak woodlands around Lake Berryessa in the south, stretching 100 miles north to the 7,000 foot peak of Snow Mountain Wilderness in the Mendocino National Forest: and

WHEREAS, permanently protected public lands will enhance and ensure that local residents and visitors can continue to enjoy opportunities for many recreational activities including hiking, hunting, fishing, horseback riding, photography, camping, orienteering, wildlife viewing, scientific research, mountain biking, motorized recreation on authorized routes, nature study, and other forms of land and water-based recreation; and

WHEREAS, the Lake Berryessa Recreation Area is a federal recreation destination with motor boating, water skiing, paddling, hiking, swimming, other forms of recreational opportunities available, and concession areas with overnight accommodations, campgrounds, marinas, and retail facilities, as well as government offices; and Napa County wishes to ensure that such authorized activities are not affected by National Monument designation, and

WHEREAS, the Napa County Regional Park and Open Space District is currently engaged in acquiring adjacent federal land under the Recreation and Public Purposes Act (43 U.S.C. 869), thereby providing more management resources in both staff and funding as such land is incorporated into the District's

conservation and recreation plans, and may in future acquire additional land that is adjacent to federal tracts, within the region,

NOW, THEREFORE, BE IT RESOLVED that the Board of Directors of the Napa County Regional Park and Open Space District ask President Obama to designate the Berryessa Snow Mountain public lands as a National Monument on the condition that the designation will not affect the authorized activities at Lake Berryessa and that there be a limited exemption to continue to allow transfers under the Recreation and Public Purposes Act (43 U.S.C. 869), where the purpose for which the land is to be conveyed is consistent with the purposes of the National Monument.

///
///

THE FOREGOING RESOLUTION WAS DULY AND REGULARLY ADOPTED by the Board of Directors of the Napa County Regional Park and Open Space District at a regular meeting of said Board held on the 13th day of October, 2014, by the following vote:

AYES: DIRECTORS _____

NOES: DIRECTORS _____

ABSENT: DIRECTORS _____

Signed: _____
President, Board of Directors

ATTEST:

By: _____
MELISSA FROST
District Secretary

**APPROVED BY THE NAPA COUNTY
REGIONAL PARK AND OPEN SPACE
DISTRICT BOARD OF DIRECTORS**

Date: _____

Processed by:

District Secretary

APPROVED AS TO FORM
Office of County Counsel

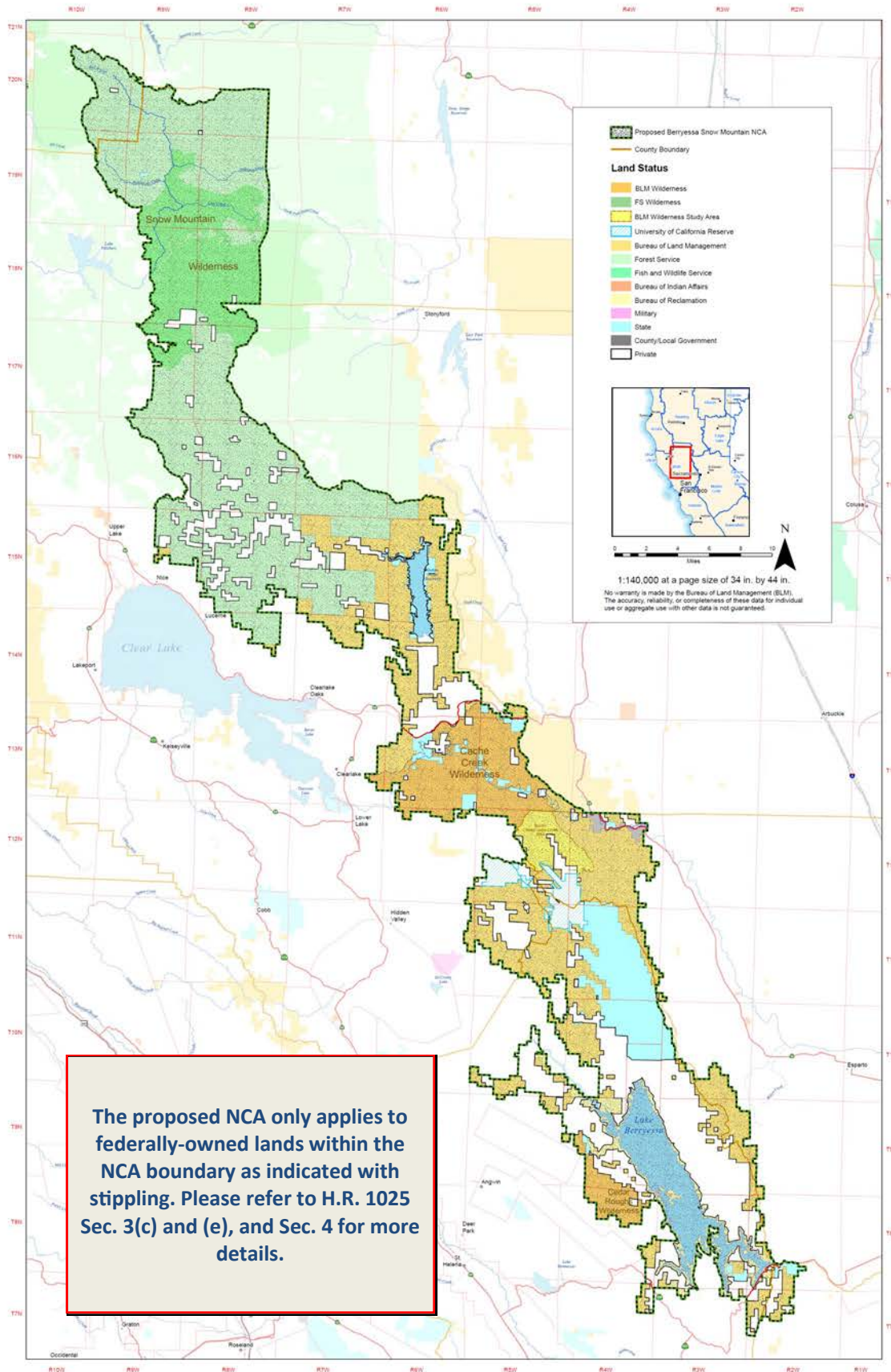
By: _____
(Via E-Signature)
Date: _____, 2014

Berryessa Snow Mountain National Conservation Area

March 5, 2013

DRAFT

This map prepared at the request of Representative Mike Thompson



The proposed NCA only applies to federally-owned lands within the NCA boundary as indicated with stippling. Please refer to H.R. 1025 Sec. 3(c) and (e), and Sec. 4 for more details.

113TH CONGRESS
1ST SESSION

H. R. 1025

To designate the Berryessa Snow Mountain National Conservation Area in the State of California, and for other purposes.

IN THE HOUSE OF REPRESENTATIVES

MARCH 7, 2013

Mr. THOMPSON of California (for himself, Mr. GARAMENDI, Mr. HUFFMAN, Ms. ESHOO, and Mr. BERA of California) introduced the following bill; which was referred to the Committee on Natural Resources

A BILL

To designate the Berryessa Snow Mountain National Conservation Area in the State of California, and for other purposes.

1 *Be it enacted by the Senate and House of Representa-*
2 *tives of the United States of America in Congress assembled,*

3 **SECTION 1. SHORT TITLE AND TABLE OF CONTENTS.**

4 (a) **SHORT TITLE.**—This Act may be cited as the
5 “Berryessa Snow Mountain National Conservation Area
6 Act”.

7 (b) **TABLE OF CONTENTS.**—The table of contents for
8 this Act is as follows:

Sec. 1. Short title and table of contents.

Sec. 2. Definitions.

Sec. 3. Establishment of Berryessa Snow Mountain National Conservation Area, California.

Sec. 4. Access and buffer zones.

Sec. 5. Management of Federal lands in conservation area.

Sec. 6. Berryessa Snow Mountain National Conservation Area Advisory Council.

Sec. 7. Water.

1 **SEC. 2. DEFINITIONS.**

2 In this Act:

3 (1) **ADVISORY COUNCIL.**—The term “advisory
4 council” means the Berryessa Snow Mountain Na-
5 tional Conservation Area Advisory Council.

6 (2) **CONSERVATION AREA.**—The term “con-
7 servation area” means the Berryessa Snow Moun-
8 tain National Conservation Area.

9 (3) **SECRETARY.**—The term “Secretary”
10 means—

11 (A) the Secretary of Agriculture, with re-
12 spect to those conservation area lands under
13 the jurisdiction of the Secretary of Agriculture;
14 and

15 (B) the Secretary of the Interior, with re-
16 spect to those conservation area lands under
17 the jurisdiction of the Secretary of the Interior.

18 (4) **SECRETARIES.**—The term “Secretaries”
19 means the Secretary of Agriculture and the Sec-
20 retary of the Interior acting jointly.

21 (5) **STATE.**—The term “State” means the State
22 of California.

1 (6) MOTOR VEHICLE USE MAPS.—The term
2 “motor vehicle use maps” means the maps produced
3 by the Forest Service titled “Motor Vehicle Use
4 Map, Mendocino National Forest, SOUTH MAP,
5 California, 2008” and “Motor Vehicle Use Map,
6 Mendocino National Forest, SOUTH CENTRAL
7 MAP, California, 2008” and any amendments to
8 those maps.

9 **SEC. 3. ESTABLISHMENT OF BERRYESSA SNOW MOUNTAIN**
10 **NATIONAL CONSERVATION AREA, CALI-**
11 **FORNIA.**

12 (a) ESTABLISHMENT.—Subject to valid existing
13 rights, there is hereby established the Berryessa Snow
14 Mountain National Conservation Area in the State.

15 (b) PURPOSE.—The purpose of the Berryessa Snow
16 Mountain National Conservation Area is to conserve, pro-
17 tect, and enhance for the benefit and enjoyment of present
18 and future generations the ecological, scenic, wildlife, rec-
19 reational, cultural, historical, natural, educational, and
20 scientific resources of the lands included in the conserva-
21 tion area.

22 (c) AREA INCLUDED.—The conservation area con-
23 sists of approximately _____ acres of Federal land and
24 interests in Federal land within Napa, Lake, Mendocino,
25 Solano, and Yolo Counties, California, as depicted on the

1 map entitled "Berryessa Snow Mountain National Con-
2 servation Area" and dated _____.

3 (d) LEGAL DESCRIPTIONS; CORRECTIONS OF ER-
4 RORS.—

5 (1) PREPARATION.—As soon as practical after
6 the date of enactment of this Act, but in no event
7 later than two years after such date, the Secretaries
8 shall prepare final maps and legal descriptions of the
9 conservation area.

10 (2) SUBMISSION.—As soon as practicable after
11 the preparation of the maps and legal descriptions
12 under paragraph (1), the Secretaries shall submit
13 the maps and legal descriptions to the Committee on
14 Natural Resources of the House of Representatives
15 and to the Committee on Energy and Natural Re-
16 sources of the Senate.

17 (3) PUBLIC AVAILABILITY.—The maps and
18 legal descriptions prepared under paragraph (1)
19 shall be available for public inspection at appropriate
20 offices of the Bureau of Land Management and For-
21 est Service.

22 (4) LEGAL EFFECT.—The maps and legal de-
23 scriptions of the conservation area shall have the
24 same force and effect as if included in this Act, ex-
25 cept that the Secretaries may correct clerical and ty-

1 pographical errors in the maps and legal descrip-
2 tions.

3 (e) SENSE OF CONGRESS.—It is the sense of Con-
4 gress that this Act should apply only to Federal land and
5 interests in Federal land and should not apply to private
6 property or other non-Federal land and interests in land.

7 **SEC. 4. ACCESS AND BUFFER ZONES.**

8 (a) NON-FEDERAL LANDS AND INTERESTS.—

9 (1) NO REQUIREMENT OF PUBLIC ACCESS.—
10 Nothing in this Act requires a non-Federal property
11 owner to allow public access to private property.

12 (2) AFFECT ON OTHER LAWS.—Nothing in this
13 Act modifies any provision of Federal, State, or local
14 law with respect to use of non-Federal land.

15 (b) ACCESS.—The Secretary shall continue to provide
16 historical and adequate access to private inholdings in the
17 conservation area.

18 (c) BUFFER ZONES.—

19 (1) IN GENERAL.—Nothing in this Act creates
20 a protective perimeter or buffer zone around the
21 conservation area.

22 (2) ACTIVITIES OUTSIDE OF CONSERVATION
23 AREA.—The fact that any activities or uses outside
24 of areas designated by this Act can be seen or heard

1 within the conservation area shall not preclude the
2 activities or uses outside of the conservation area.

3 **SEC. 5. MANAGEMENT OF FEDERAL LANDS IN CONSERVA-**
4 **TION AREA.**

5 (a) BASIS OF MANAGEMENT.—

6 (1) APPLICABLE LAWS.—The Secretary shall
7 manage the conservation area in a manner that con-
8 serves, protects, and enhances the natural resources
9 and values of the conservation area, in accordance
10 with—

11 (A) this Act;

12 (B) the Federal Land Policy and Manage-
13 ment Act of 1976 (43 U.S.C. 1701 et seq.) for
14 lands managed by the Bureau of Land Manage-
15 ment;

16 (C) the Wilderness Act (16 U.S.C. 1131 et
17 seq.);

18 (D) the Act of June 17, 1902 (commonly
19 known as the Reclamation Act of 1902; 32
20 Stat. 388) and Acts amendatory thereof and
21 supplemental thereto;

22 (E) other laws (including regulations) ap-
23 plicable to the National Forest System for land
24 managed by the Forest Service; and

1 (F) other applicable law (including regula-
2 tions).

3 (2) RESOLUTION OF CONFLICTS.—If there is a
4 conflict between a provision of this Act and a provi-
5 sion of one of the other laws specified in paragraph
6 (1), the more restrictive provision shall control.

7 (b) USES.—The Secretary shall allow only such uses
8 of the conservation area as the Secretary determines
9 would further the purposes for which the conservation
10 area is established.

11 (c) TRIBAL CULTURAL USES.—Nothing in this Act
12 shall be construed to enlarge or diminish the rights of any
13 Indian tribe.

14 (d) RECREATION.—The Secretary shall continue to
15 authorize, maintain, and enhance the recreational use of
16 the conservation area, including hunting, fishing, camping,
17 hiking, hang gliding, sightseeing, nature study, horseback
18 riding, rafting, mountain biking and motorized recreation
19 on authorized routes, and other recreational activities, so
20 long as such recreational use is consistent with the pur-
21 poses of the conservation area, this section, other applica-
22 ble law (including regulations), and applicable manage-
23 ment plans.

24 (e) MANAGEMENT PLAN.—

1 (1) IN GENERAL.—Within three years after the
2 date of enactment of this Act, the Secretaries shall
3 develop a comprehensive plan for the protection and
4 management of the Federal lands included within
5 the conservation area that fulfills the purposes for
6 which the conservation area is established. In imple-
7 menting the management plan and in considering
8 any recommendations from the advisory council, the
9 Secretaries shall consult on a regular basis.

10 (2) PURPOSES.—The management plan shall—

11 (A) describe the appropriate uses and
12 management of the conservation area;

13 (B) be developed with extensive public
14 input;

15 (C) take into consideration any informa-
16 tion developed in studies of the land within the
17 conservation area;

18 (D) assess the impacts of climate change
19 on the conservation area and establish policies
20 and procedures to ensure the preservation of
21 wildlife corridors and facilitate species migra-
22 tion;

23 (E) include a comprehensive weed manage-
24 ment strategy (including use of grazing where

1 appropriate) to guide noxious weed control ef-
2 forts and activities;

3 (F) identify and prioritize habitat restora-
4 tion opportunities and strategies within the con-
5 servation area;

6 (G) identify opportunities to enhance rec-
7 reational opportunities throughout the conserva-
8 tion area;

9 (H) identify areas outside of designated
10 wilderness where non-motorized recreation will
11 be emphasized;

12 (I) identify opportunities to improve fish
13 passage and habitat quality for native fish spe-
14 cies;

15 (J) include a plan to address the public
16 safety and environmental clean-up issues associ-
17 ated with illegal marijuana production within
18 the conservation area;

19 (K) identify opportunities to promote vol-
20 untary cooperative conservation projects with
21 State, local, and private interests; and

22 (L) take into consideration existing land
23 uses (including grazing) on the Federal lands
24 within the conservation area.

1 (3) OTHER PLANS.—In developing the manage-
2 ment plan, and to the extent consistent with this
3 section, the Secretary may incorporate any provision
4 from a resource management plan, land and re-
5 source management plan, or any other plan applica-
6 ble to the conservation area.

7 (4) COOPERATIVE AGREEMENTS.—In carrying
8 out this Act, the Secretary may make grants to, or
9 enter into cooperative agreements with, State, tribal,
10 and local governmental entities and private entities
11 to conduct research, develop scientific analyses, and
12 carry out any other initiative relating to the restora-
13 tion or conservation of the conservation area.

14 (f) FISH AND WILDLIFE.—Nothing in this Act af-
15 fects the jurisdiction of the State with respect to fish and
16 wildlife located on public land in the State, except that
17 the Secretary, after consultation with the California De-
18 partment of Fish and Wildlife, may designate zones in the
19 conservation area where, and periods when, hunting shall
20 not be allowed for reasons of public safety, administration,
21 or public use and enjoyment.

22 (g) MOTORIZED AND MECHANIZED VEHICLES.—

23 (1) IN GENERAL.—Except where needed for ad-
24 ministrative purposes or to respond to an emer-
25 gency, the use of motorized and mechanized vehicles

1 on lands within the conservation area shall be per-
2 mitted only on roads and trails designated for their
3 use.

4 (2) ADDITIONAL REQUIREMENT.—In developing
5 the management plan required by this section, and
6 to the extent consistent with this section, the Sec-
7 retary, for lands under jurisdiction of Forest Serv-
8 ice, shall incorporate the motor vehicle use maps. In
9 developing the management plan (and making any
10 subsequent amendment to the management plan),
11 the Secretary shall explicitly analyze and docu-
12 ment—

13 (A) each instance in which the require-
14 ments of this section or other applicable law
15 makes it necessary to alter the motor vehicle
16 use maps; and

17 (B) the manner in which the motor vehicle
18 use maps are consistent with the requirements
19 of this section.

20 (h) INCORPORATION OF ACQUIRED LANDS AND IN-
21 TERESTS.—

22 (1) AUTHORITY.—The Secretary may acquire
23 non-Federal land within the boundaries of the con-
24 servation area only through exchange, donation, or
25 purchase from a willing seller.

1 (2) MANAGEMENT.—Any land or interest in
2 land that is located within the conservation area that
3 is acquired by the United States shall—

4 (A) become part of the conservation area;

5 and

6 (B) be managed in accordance with this
7 Act.

8 (i) WITHDRAWAL.—Subject to valid existing rights,
9 all Federal land within the conservation area is withdrawn
10 from—

11 (1) entry, appropriation, or disposal under the
12 public land laws;

13 (2) location, entry, and patent under the mining
14 laws; and

15 (3) leasing or disposition under all laws relating
16 to—

17 (A) minerals; and

18 (B) operation of the mineral leasing, min-
19 eral materials, and geothermal leasing laws.

20 (j) GRAZING.—

21 (1) IN GENERAL.—Livestock grazing within the
22 conservation area, where established before the date
23 of enactment of this Act, shall be permitted to con-
24 tinue subject to all applicable laws and regulations.

1 (2) OTHER GRAZING.—Livestock grazing within
2 the conservation area, where not established before
3 the date of enactment of this Act, shall only be per-
4 mitted to the extent that it is consistent with the
5 purposes of the conservation area and subject to all
6 applicable laws and regulations.

7 (3) TARGETED GRAZING.—The Secretary may
8 issue annual targeted grazing permits for purposes
9 of the control of noxious weeds, fire suppression, or
10 to provide other ecological benefits consistent with
11 the purposes of the conservation area.

12 (k) WILDLAND FIRE OPERATIONS.—Nothing in this
13 section prohibits the Secretary, in cooperation with other
14 Federal, State, and local agencies, as appropriate, from
15 conducting wildland fire operations in the conservation
16 area, consistent with the purposes of the conservation
17 area.

18 (l) HORSES.—Subject to any terms and conditions
19 determined to be necessary by the Secretary, nothing in
20 this Act precludes horseback riding in, or the entry of rec-
21 reational or commercial saddle or pack stock into, the con-
22 servation area where such use is consistent with the pur-
23 poses of the conservation area and other applicable law
24 (including regulations).

1 **SEC. 6. BERRYESSA SNOW MOUNTAIN NATIONAL CON-**
2 **SERVATION AREA ADVISORY COUNCIL.**

3 (a) **ESTABLISHMENT.**—Not less than 180 days after
4 the date of enactment of this Act, the Secretaries shall
5 establish an advisory council, to be known as the
6 “Berryessa Snow Mountain National Conservation Area
7 Advisory Council”.

8 (b) **DUTIES.**—The advisory council shall advise the
9 Secretaries with respect to the preparation and implemen-
10 tation of the management plan for the conservation area.

11 (c) **APPLICABLE LAW.**—The advisory council shall be
12 subject to—

13 (1) the Federal Advisory Committee Act (5
14 U.S.C. App.);

15 (2) the Federal Land Policy and Management
16 Act of 1976 (43 U.S.C. 1701 et seq.); and

17 (3) all other applicable law.

18 (d) **MEMBERS.**—The advisory council shall include 12
19 members, to be appointed by the Secretaries, of whom,
20 to the extent practicable—

21 (1) one member shall be appointed after consid-
22 ering the recommendations of the Lake County
23 Board of Supervisors;

24 (2) one member shall be appointed after consid-
25 ering the recommendations of the Napa County
26 Board of Supervisors;

1 (3) one member shall be appointed after consid-
2 ering the recommendations of the Yolo County
3 Board of Supervisors;

4 (4) one member shall be appointed after consid-
5 ering the recommendations of the Mendocino County
6 Board of Supervisors;

7 (5) one member shall be appointed after consid-
8 ering the recommendations of the Solano County
9 Board of Supervisors;

10 (6) one member shall be appointed after consid-
11 ering the recommendations of the head of the Cali-
12 fornia Resources Agency;

13 (7) one member shall be appointed to represent
14 Native American Tribes;

15 (8) five members shall reside in, or within rea-
16 sonable proximity to, Yolo County, Napa County,
17 Mendocino County, Solano County, or Lake County,
18 California, with backgrounds that reflect—

19 (A) the purposes for which the conserva-
20 tion area was established; and

21 (B) the interest of the stakeholders that
22 are affected by the planning and management
23 of the conservation area, including stakeholders
24 representing the agricultural, private land-own-

1 ership, environmental, recreational, tourism, or
2 other non-Federal land interests.

3 (e) REPRESENTATION.—The Secretaries shall ensure
4 that the membership of the advisory council is fairly bal-
5 anced in terms of the points of view represented and the
6 functions to be performed by the advisory council.

7 (f) TERMS.—

8 (1) STAGGERED TERMS.—Members of the advi-
9 sory council shall be appointed for terms of 3 years,
10 except that, of the members first appointed, 4 of the
11 members shall be appointed for a term of 1 year and
12 4 of the members shall be appointed for a term of
13 2 years.

14 (2) REAPPOINTMENT.—A member may be re-
15 appointed to serve on the advisory council upon the
16 expiration of the member's current term.

17 (3) VACANCY.—A vacancy on the advisory
18 council shall be filled in the same manner as the
19 original appointment.

20 (g) QUORUM.—A quorum shall be six members of the
21 advisory council. The operations of the advisory council
22 shall not be impaired by the fact that a member has not
23 yet been appointed as long as a quorum has been attained.

1 (h) CHAIRPERSON AND PROCEDURES.—The advisory
2 council shall elect a chairperson and establish such rules
3 and procedures as it deems necessary or desirable.

4 (i) SERVICE WITHOUT COMPENSATION.—Members of
5 the advisory council shall serve without pay.

6 (j) TERMINATION.—The advisory committee shall
7 cease to exist—

8 (1) on the date that is five years after the date
9 on which the management plan is officially adopted
10 by the Secretaries; or

11 (2) on such later date as the Secretaries con-
12 sider appropriate.

13 **SEC. 7. WATER.**

14 Nothing in this Act—

15 (1) affects the use or allocation, in existence on
16 the date of enactment of this Act, of any water,
17 water right, or interest in water;

18 (2) affects any vested absolute or decreed condi-
19 tional water right in existence on the date of enact-
20 ment of this Act, including any water right held by
21 the United States;

22 (3) affects any interstate water compact in ex-
23 istence on the date of enactment of this Act;

24 (4) authorizes or imposes any new reserved
25 Federal water rights;

1 (5) relinquishes or reduces any water rights re-
2 served or appropriated by the United States in the
3 State on or before the date of enactment of this Act;

4 (6) impairs the ability of the Bureau of Rec-
5 lamation and its managing partners to operate,
6 maintain, or manage Monticello Dam, Lake
7 Berryessa, and other Solano Project facilities in ac-
8 cordance with the purposes of such project;

9 (7) modifies, changes, or supersedes any water
10 contract or agreements approved or administered by
11 the Bureau of Reclamation or Solano County Water
12 Agency or Solano Irrigation District; or

13 (8) affects the use of motorized or non-
14 motorized watercraft (including personal, commer-
15 cial, and recreational watercraft) on Lake Berryessa.

○



Napa County Regional Park
and Open Space District

STAFF REPORT

Date: October 13, 2014
Item: 4.C
Subject: Receipt of report on expenditures, encumbrances, donations, and grants approved by District staff

Recommendation

Receive the report.

Background

Section III.A.(7) of the District By-laws authorizes the General Manager to bind the district for supplies, materials, labor, and other valuable consideration, in accordance with board policy and the adopted District budget, up to \$10,000 for non-construction purposes and up to \$25,000 for construction purposes, provided that all such expenditures are subsequently reported to the Board of Directors. Section III.A.(8) of the By-laws authorizes the General Manager to apply for grants and receive donations, subject to reporting such actions to the Board of Directors.

Attached is a report showing all District expenditures for September 1 through October 7, 2014.

Report ID: GLS7505
Bus. Unit: NAPCG-County of Napa
Fund: 8500 N C Parks & Open Space Distr
Dept: 8500000Parks-Administration

GENERAL LEDGER DETAIL TRANSACTIONS
For Fiscal Year 2015
Period 3 to 4

Page No. 2
Run Date 10/07/2014
Run Time 14:30:37

Program:

Journal Date	Journal ID	Journal Description	Voucher Desc	Reference	Vendor ID	Name	Seq	Debit	Credit	Balance	
Account 52830 - Publications & Legal Notices											
09/08/2014	AP00256968	#27305 CDPC891 7/2/14	Acct. 237-6000	00041466	878	NAVLY-PUBL		114.08	0.00		
09/08/2014	AP00256968	#28821 CDPC898 7/28/14	Acct. 237-6000	00041472	878	NAVLY-PUBL		68.53	0.00		
09/08/2014	AP00256968	#29003 CDPC897 7/31/14	Acct. 237-6000	00041473	878	NAVLY-PUBL		86.75	0.00		
Total For 52830 - Publications & Legal Notices								269.36	0.00		
										Beginning Balance:	0.00
										Total Activity:	269.36
										Ending Balance:	269.36
Account 52905 - Business Travel/Mileage											
09/08/2014	AP00256968	Mileage		00041548				138.88	0.00		
Total For 52905 - Business Travel/Mileage								138.88	0.00		
										Beginning Balance:	147.68
										Total Activity:	138.88
										Ending Balance:	286.56
Account 53100 - Office Supplies											
10/06/2014	AP00257935	Office exp reimbursements	Reimbursement	00045357	24717	CAHILL,CHR		39.96	0.00		
Total For 53100 - Office Supplies								39.96	0.00		
										Beginning Balance:	0.00
										Total Activity:	39.96
										Ending Balance:	39.96

Report ID: GLS7505
Bus. Unit: NAPCG-County of Napa
Fund: 8500 N C Parks & Open Space Distr
Dept: 8500000Parks-Administration

GENERAL LEDGER DETAIL TRANSACTIONS
For Fiscal Year 2015
Period 3 to 4

Page No. 3
Run Date 10/07/2014
Run Time 14:30:37

Program:

Journal	Date	Journal ID	Journal Description	Voucher Desc	Reference	Vendor ID	Name	Seq	Debit	Credit	Balance
Account	53415		- Computer Software/Licensing Fe								
	09/08/2014	AP00256968	Web Service annual payment	Reimbursement	00041548	19796	WOODBURY,J		431.46	0.00	
Total For	53415		- Computer Software/Licensing Fe						431.46	0.00	
									Beginning Balance:		0.00
									Total Activity:		431.46
									Ending Balance:		431.46
Account	53600		- Special Departmental Expense								
	09/18/2014	AP00257412	Abramowicz boulder plaque	Napa County Pa	00043259	36796	NAPAMARBLE		799.20	0.00	
Total For	53600		- Special Departmental Expense						799.20	0.00	
									Beginning Balance:		0.00
									Total Activity:		799.20
									Ending Balance:		799.20
TOTAL EXPENSE									15,516.49	0.00	20,123.83

Report ID: GLS7505
 Bus. Unit: NAPCG-County of Napa
 Fund: 8500 N C Parks & Open Space Distr
 Dept: 8501000Parks-Moore Creek

GENERAL LEDGER DETAIL TRANSACTIONS
 For Fiscal Year 2015
 Period 3 to 4

Page No. 4
 Run Date 10/07/2014
 Run Time 14:30:37

Program:

Journal	Date	Journal ID	Journal Description	Voucher Desc	Reference	Vendor ID	Name	Seq	Debit	Credit	Balance
Account	52325		- Waste Disposal Services								
10/06/2014		AP00257935	United 9/17/14-10/14/14	Cust #CAN-0973	00045361	20925	UNITEDSITE		115.62	0.00	
10/06/2014		AP00257935	United-Misc serv 9/25/14	Cust #CAN-0973	00045362	20925	UNITEDSITE		73.39	0.00	
Total For 52325 - Waste Disposal Services									189.01	0.00	
										Beginning Balance:	346.86
										Total Activity:	189.01
										Ending Balance:	535.87
Account	52360		- Construction Services								
Account	52360		- Construction Services						0.00	0.00	
										Beginning Balance:	2,000.00
										Total Activity:	0.00
										Ending Balance:	2,000.00
Account	52490		- Other Professional Services								
09/08/2014		AP00256968	McCollum-service call	Moore Creek Pa	00041554	13247	MCCOLLUMGE		130.15	0.00	
09/09/2014		AP00257052	PARK070115 8/14	8/14 Services	00041743	23180	CJYIPASSOC		1,549.68	0.00	
09/23/2014		AP00257544	PARK140215 9/14	9/14 Moore Cre	00043827	35422	HERITAGESY		367.67	0.00	
Total For 52490 - Other Professional Services									2,047.50	0.00	
										Beginning Balance:	2,092.82
										Total Activity:	2,047.50
										Ending Balance:	4,140.32

Report ID: GLS7505
 Bus. Unit: NAPCG-County of Napa
 Fund: 8500 N C Parks & Open Space Distr
 Dept: 8501000Parks-Moore Creek

GENERAL LEDGER DETAIL TRANSACTIONS
 For Fiscal Year 2015
 Period 3 to 4

Page No. 5
 Run Date 10/07/2014
 Run Time 14:30:37

Program:

Journal	Date	Journal ID	Journal Description	Voucher Desc	Reference	Vendor ID	Name	Seq	Debit	Credit	Balance	
Account	52800		- Communications/Telephone									
	09/24/2014	AP00257571	9/12/14 - 10/12/14	Acct #DSS88360	00044003	17372	HUGHESNETW		76.59	0.00		
Total For	52800		- Communications/Telephone						76.59	0.00		
											Beginning Balance:	153.18
											Total Activity:	76.59
											Ending Balance:	229.77
Account	52840		- Permits/License Fees									
Account	52840		- Permits/License Fees						0.00	0.00		
											Beginning Balance:	431.00
											Total Activity:	0.00
											Ending Balance:	431.00
Account	53205		- Utilities - Electric									
	10/06/2014	AP00257935	PG&E 8/23/14-9/23/14	Acct #00997592	00045359	945	PAC-GAS-00		155.68	0.00		
Total For	53205		- Utilities - Electric						155.68	0.00		
											Beginning Balance:	305.43
											Total Activity:	155.68
											Ending Balance:	461.11
Account	53350		- Maintenance Supplies									
	09/08/2014	AP00256968	Supplies-gravel		00041548				28.62	0.00		
	09/08/2014	AP00256968	Central Valley-August 2014	Cust #NAPACORP	00041560	219	CENTRALVAL		77.57	0.00		

Report ID: GLS7505
 Bus. Unit: NAPCG-County of Napa
 Fund: 8500 N C Parks & Open Space Distr
 Dept: 8501000Parks-Moore Creek

GENERAL LEDGER DETAIL TRANSACTIONS
 For Fiscal Year 2015
 Period 3 to 4

Page No. 6
 Run Date 10/07/2014
 Run Time 14:30:37

Program:

Journal Date	Journal ID	Journal Description	Voucher Desc	Reference	Vendor ID	Name	Seq	Debit	Credit	Balance
10/06/2014	AP00257935	Diamond-pool supplies	Acct #55555555	00045363	25498	DIAMONDQUA		109.40	0.00	
Total For 53350 - Maintenance Supplies								215.59	0.00	
								Beginning Balance:		325.27
								Total Activity:		215.59
								Ending Balance:		540.86
<hr/>										
Account	53600	- Special Departmental Expense								
09/08/2014	AP00256968	Chino-volunteer food		00041535				145.07	0.00	
Total For 53600 - Special Departmental Expense								145.07	0.00	
								Beginning Balance:		0.00
								Total Activity:		145.07
								Ending Balance:		145.07
<hr/>										
Account	54500	- Taxes and Assessments								
Account	54500	- Taxes and Assessments								
								0.00	0.00	
								Beginning Balance:		757.62
								Total Activity:		0.00
								Ending Balance:		757.62
<hr/>										
TOTAL EXPENSE								2,829.44	0.00	9,241.62
=====										

Report ID: GLS7505
Bus. Unit: NAPCG-County of Napa
Fund: 8500 N C Parks & Open Space Distr
Dept: 8501001Parks-Oat Hill Mine Trail

GENERAL LEDGER DETAIL TRANSACTIONS
For Fiscal Year 2015
Period 3 to 4

Page No. 7
Run Date 10/07/2014
Run Time 14:30:37

Program:

Journal	Date	Journal ID	Journal Description	Voucher Desc	Reference	Vendor ID	Name	Seq	Debit	Credit	Balance
Account	52490		- Other Professional Services								
	09/09/2014	AP00257052	PARK070115 8/14	8/14 Services	00041743	23180	CJYIPASSOC		479.12	0.00	
Total For	52490		- Other Professional Services						479.12	0.00	
									Beginning Balance:		161.20
									Total Activity:		479.12
									Ending Balance:		640.32
TOTAL EXPENSE									479.12	0.00	640.32

=====

Report ID: GLS7505
Bus. Unit: NAPCG-County of Napa
Fund: 8500 N C Parks & Open Space Distr
Dept: 8501002Parks-Napa River and Bay Trail

GENERAL LEDGER DETAIL TRANSACTIONS
For Fiscal Year 2015
Period 3 to 4

Page No. 8
Run Date 10/07/2014
Run Time 14:30:37

Program:

Journal	Date	Journal ID	Journal Description	Voucher Desc	Reference	Vendor ID	Name	Seq	Debit	Credit	Balance	
Account	52490		- Other Professional Services									
	09/09/2014	AP00257052	PARK070115 8/14	8/14 Services	00041743	23180	CJYIPASSOC		488.64	0.00		
Total For	52490		- Other Professional Services						488.64	0.00		
											Beginning Balance:	425.20
											Total Activity:	488.64
											Ending Balance:	913.84
Account	52905		- Business Travel/Mileage									
	09/08/2014	AP00256968	Mileage		00041548				50.96	0.00		
Total For	52905		- Business Travel/Mileage						50.96	0.00		
											Beginning Balance:	12.88
											Total Activity:	50.96
											Ending Balance:	63.84
Account	53350		- Maintenance Supplies									
	09/08/2014	AP00256968	Chino-Panel material		00041535				19.20	0.00		
Total For	53350		- Maintenance Supplies						19.20	0.00		
											Beginning Balance:	0.00
											Total Activity:	19.20
											Ending Balance:	19.20
TOTAL EXPENSE									558.80	0.00	996.88	

Report ID: GLS7505
Bus. Unit: NAPCG-County of Napa
Fund: 8500 N C Parks & Open Space Distr
Dept: 8501002Parks-Napa River and Bay Trail

GENERAL LEDGER DETAIL TRANSACTIONS
For Fiscal Year 2015
Period 3 to 4

Page No. 9
Run Date 10/07/2014
Run Time 14:30:37

Program:

Journal	Date	Journal ID	Journal Description	Voucher Desc	Reference	Vendor ID	Name	Seq	Debit	Credit	Balance
---------	------	------------	---------------------	--------------	-----------	-----------	------	-----	-------	--------	---------

Report ID: GLS7505
 Bus. Unit: NAPCG-County of Napa
 Fund: 8500 N C Parks & Open Space Distr
 Dept: 8501003Parks-Camp Berryessa

GENERAL LEDGER DETAIL TRANSACTIONS
 For Fiscal Year 2015
 Period 3 to 4

Page No. 10
 Run Date 10/07/2014
 Run Time 14:30:37

Program:

Journal	Date	Journal ID	Journal Description	Voucher Desc	Reference	Vendor ID	Name	Seq	Debit	Credit	Balance
Account	52360		- Construction Services								
	09/02/2014	AP00256779	Svc extension 7850 Berryessa	Contract ID 11	00041026	945	PAC-GAS-00		5,079.15	0.00	
Total For	52360		- Construction Services						5,079.15	0.00	
									Beginning Balance:		2,000.00
									Total Activity:		5,079.15
									Ending Balance:		7,079.15
Account	52490		- Other Professional Services								
Account	52490		- Other Professional Services						0.00	0.00	
									Beginning Balance:		75.00
									Total Activity:		0.00
									Ending Balance:		75.00
Account	52840		- Permits/License Fees								
	10/02/2014	0000257880	Plan Ck fees-water system		#130843				490.00	0.00	
Total For	52840		- Permits/License Fees						490.00	0.00	
									Beginning Balance:		1,031.00
									Total Activity:		490.00
									Ending Balance:		1,521.00
TOTAL EXPENSE									5,569.15	0.00	8,675.15

Report ID: GLS7505
Bus. Unit: NAPCG-County of Napa
Fund: 8500 N C Parks & Open Space Distr
Dept: 8501005Parks-Napa River Ecological Rs

GENERAL LEDGER DETAIL TRANSACTIONS
For Fiscal Year 2015
Period 3 to 4

Page No. 11
Run Date 10/07/2014
Run Time 14:30:37

Program:

Journal Date	Journal ID	Journal Description	Voucher Desc	Reference	Vendor ID	Name	Seq	Debit	Credit	Balance	
Account 52325 - Waste Disposal Services											
09/18/2014	AP00257412	Upper Vly - Aug 2014	Acct #01-48644	00043227	19694	UPPERVALLE		101.52	0.00		
09/24/2014	AP00257571	United Site 9/11/14-10/8/14	Cust #CAN-0973	00043998	20925	UNITEDSITE		243.85	0.00		
Total For 52325 - Waste Disposal Services								345.37	0.00		
										Beginning Balance:	833.07
										Total Activity:	345.37
										Ending Balance:	1,178.44
Account 52340 - Landscaping Services											
Account 52340 - Landscaping Services											
								0.00	0.00		
										Beginning Balance:	240.00
										Total Activity:	0.00
										Ending Balance:	240.00
Account 52490 - Other Professional Services											
09/09/2014	AP00257052	PARK081215 7/14	7/14 Services	00041741	24404	OPTIONS3-0		985.00	0.00		
09/09/2014	AP00257052	PARK070115 8/14	8/14 Services	00041743	23180	CJYIPASSOC		556.16	0.00		
09/23/2014	AP00257544	PARK081215 Options3 8/14	8/14 Services	00043824	24404	OPTIONS3-0		813.75	0.00		
Total For 52490 - Other Professional Services								2,354.91	0.00		
										Beginning Balance:	836.96
										Total Activity:	2,354.91
										Ending Balance:	3,191.87

Report ID: GLS7505
Bus. Unit: NAPCG-County of Napa
Fund: 8500 N C Parks & Open Space Distr
Dept: 8501005Parks-Napa River Ecological Rs

GENERAL LEDGER DETAIL TRANSACTIONS
For Fiscal Year 2015
Period 3 to 4

Page No. 12
Run Date 10/07/2014
Run Time 14:30:37

Program:

Journal Date	Journal ID	Journal Description	Voucher Desc	Reference	Vendor ID	Name	Seq	Debit	Credit	Balance
TOTAL EXPENSE								2,700.28	0.00	4,610.31

=====

Report ID: GLS7505
Bus. Unit: NAPCG-County of Napa
Fund: 8500 N C Parks & Open Space Distr
Dept: 8501007Parks-Putah Creek

GENERAL LEDGER DETAIL TRANSACTIONS
For Fiscal Year 2015
Period 3 to 4

Page No. 13
Run Date 10/07/2014
Run Time 14:30:37

Program:

Journal	Date	Journal ID	Journal Description	Voucher Desc	Reference	Vendor ID	Name	Seq	Debit	Credit	Balance
Account	52490		- Other Professional Services								
	09/09/2014	AP00257052	PARK070115 8/14	8/14 Services	00041743	23180	CJYIPASSOC		338.64	0.00	
Total For	52490		- Other Professional Services						338.64	0.00	
									Beginning Balance:		650.80
									Total Activity:		338.64
									Ending Balance:		989.44
TOTAL EXPENSE									338.64	0.00	989.44

=====

Report ID: GLS7505
 Bus. Unit: NAPCG-County of Napa
 Fund: 8500 N C Parks & Open Space Distr
 Dept: 8501008Parks-State Parks

GENERAL LEDGER DETAIL TRANSACTIONS
 For Fiscal Year 2015
 Period 3 to 4

Page No. 14
 Run Date 10/07/2014
 Run Time 14:30:37

Program:

Journal Date	Journal ID	Journal Description	Voucher Desc	Reference	Vendor ID	Name	Seq	Debit	Credit	Balance
Account	52325	- Waste Disposal Services								
09/18/2014	AP00257412	United Site 9/4/14-10/1/14	Cust #CAN-0973	00043226	20925	UNITEDSITE		486.70	0.00	
09/18/2014	AP00257412	Upper Vly - Ashes	Acct #01-2642-	00043261	19694	UPPERVALLE		328.17	0.00	
09/18/2014	AP00257412	Upper Vly - August 2014	Acct #01-13452	00043265	19694	UPPERVALLE		856.95	0.00	
Total For 52325 - Waste Disposal Services								1,671.82	0.00	
								Beginning Balance:		2,544.56
								Total Activity:		1,671.82
								Ending Balance:		4,216.38
Account	52360	- Construction Services								
Account	52360	- Construction Services								
								0.00	0.00	
								Beginning Balance:		916.61
								Total Activity:		0.00
								Ending Balance:		916.61
Account	52490	- Other Professional Services								
09/09/2014	AP00257052	PARK140915 8/14	8/14 Services	00041739	36609	EHLERS, JON		600.00	0.00	
09/23/2014	AP00257544	PARK081215 8/14	8/14 Services	00043825	33711	MARIONI, JE		1,211.00	0.00	
09/24/2014	AP00257571	ATP Sept 2014	Acct #746-0150	00044006	33928	ADVANTAGET		40.00	0.00	
Total For 52490 - Other Professional Services								1,851.00	0.00	
								Beginning Balance:		2,243.75
								Total Activity:		1,851.00
								Ending Balance:		4,094.75

Report ID: GLS7505
Bus. Unit: NAPCG-County of Napa
Fund: 8500 N C Parks & Open Space Distr
Dept: 8501008Parks-State Parks

GENERAL LEDGER DETAIL TRANSACTIONS
For Fiscal Year 2015
Period 3 to 4

Page No. 15
Run Date 10/07/2014
Run Time 14:30:37

Program:

Journal	Date	Journal ID	Journal Description	Voucher Desc	Reference	Vendor ID	Name	Seq	Debit	Credit	Balance
Account	52520		- Maintenance-Vehicles								
Account	52520		- Maintenance-Vehicles						0.00	0.00	
									Beginning Balance:		787.65
									Total Activity:		0.00
									Ending Balance:		787.65
Account	52525		- Maintenance-Infrastructure/Lan								
	09/18/2014	AP00257412	Konocti labor (May 2014)	Bothe Park wor	00043281	27627	CAST-DEPTF		451.08	0.00	
Total For	52525		- Maintenance-Infrastructure/Lan						451.08	0.00	
									Beginning Balance:		0.00
									Total Activity:		451.08
									Ending Balance:		451.08
Account	52800		- Communications/Telephone								
	09/18/2014	AP00257412	Telepacific-Sept 2014	Acct #133326	00043278	34480	TELEPACIFI		551.74	0.00	
Total For	52800		- Communications/Telephone						551.74	0.00	
									Beginning Balance:		1,117.76
									Total Activity:		551.74
									Ending Balance:		1,669.50
Account	52825		- Bank Charges								
	09/08/2014	0000256950	Heartland credit card fees-WFB			9/2/14			49.54	0.00	

Report ID: GLS7505
 Bus. Unit: NAPCG-County of Napa
 Fund: 8500 N C Parks & Open Space Distr
 Dept: 8501008Parks-State Parks

GENERAL LEDGER DETAIL TRANSACTIONS
 For Fiscal Year 2015
 Period 3 to 4

Page No. 16
 Run Date 10/07/2014
 Run Time 14:30:37

Program:

Journal Date	Journal ID	Journal Description	Voucher Desc	Reference	Vendor ID	Name	Seq	Debit	Credit	Balance
10/02/2014	0000257846	Heartland credit card fees-WFB		10/1/14				45.14	0.00	
Total For 52825 - Bank Charges								94.68	0.00	
								Beginning Balance:		97.46
								Total Activity:		94.68
								Ending Balance:		192.14
<hr/>										
Account	52840	- Permits/License Fees								
Account	52840	- Permits/License Fees								
								0.00	0.00	
								Beginning Balance:		214.00
								Total Activity:		0.00
								Ending Balance:		214.00
<hr/>										
Account	52905	- Business Travel/Mileage								
09/11/2014	AP00257203	Aug 2014 Equipment pool fuel	Statement # 42	00042232	12088	CHEVRONPRO		241.01	0.00	
Total For 52905 - Business Travel/Mileage								241.01	0.00	
								Beginning Balance:		428.89
								Total Activity:		241.01
								Ending Balance:		669.90
<hr/>										
Account	53100	- Office Supplies								
09/18/2014	AP00257412	Office supplies-Bothe	Reimbursement	00043258	33711	MARIONI,JE		22.94	0.00	
Total For 53100 - Office Supplies								22.94	0.00	
								Beginning Balance:		231.62

Report ID: GLS7505
 Bus. Unit: NAPCG-County of Napa
 Fund: 8500 N C Parks & Open Space Distr
 Dept: 8501008Parks-State Parks

GENERAL LEDGER DETAIL TRANSACTIONS
 For Fiscal Year 2015
 Period 3 to 4

Page No. 17
 Run Date 10/07/2014
 Run Time 14:30:37

Program:

Journal Date	Journal ID	Journal Description	Voucher Desc	Reference	Vendor ID	Name	Seq	Debit	Credit	Balance	
								Total Activity:		22.94	
								Ending Balance:		254.56	
<hr/>											
Account	53205	- Utilities - Electric									
09/24/2014	AP00257571	PG&E 8/16/14-9/16/14	Acct #90517302	00043971	945	PAC-GAS-00		7.89	0.00		
09/24/2014	AP00257571	PG&E 8/16/14-9/16/14	Acct #48314069	00043975	945	PAC-GAS-00		109.24	0.00		
09/24/2014	AP00257571	PG&E 8/15/14-9/15/14	Acct #21728318	00043987	945	PAC-GAS-00		61.83	0.00		
09/24/2014	AP00257571	PG&E 8/15/14-9/15/14	Acct #67654031	00043989	945	PAC-GAS-00		39.87	0.00		
09/24/2014	AP00257571	PG&E 8/16/14-9/16/14	Acct #18690124	00043994	945	PAC-GAS-00		1,137.52	0.00		
								<hr/>	<hr/>		
Total For	53205	- Utilities - Electric									
								1,356.35	0.00		
								Beginning Balance:		3,037.56	
								Total Activity:		1,356.35	
								Ending Balance:		4,393.91	
<hr/>											
Account	53330	- Janitorial Supplies									
09/08/2014	AP00256968	C&C - janitorial supplies	Acct #60124600	00041558	34310	CASH&CARRY		196.88	0.00		
								<hr/>	<hr/>		
Total For	53330	- Janitorial Supplies									
								196.88	0.00		
								Beginning Balance:		2,495.25	
								Total Activity:		196.88	
								Ending Balance:		2,692.13	
<hr/>											
Account	53345	- Construction Supplies/Material									
Account	53345	- Construction Supplies/Material									
								0.00	0.00		

Report ID: GLS7505
Bus. Unit: NAPCG-County of Napa
Fund: 8500 N C Parks & Open Space Distr
Dept: 8501008Parks-State Parks

GENERAL LEDGER DETAIL TRANSACTIONS
For Fiscal Year 2015
Period 3 to 4

Page No. 18
Run Date 10/07/2014
Run Time 14:30:37

Program:

Journal Date	Journal ID	Journal Description	Voucher Desc	Reference	Vendor ID	Name	Seq	Debit	Credit	Balance
--------------	------------	---------------------	--------------	-----------	-----------	------	-----	-------	--------	---------

Beginning Balance: 3,189.39
 Total Activity: 0.00
 Ending Balance: 3,189.39

Account 53350 - Maintenance Supplies

09/08/2014	AP00256968	Brown Auto-supplies	Acct #8537	00041540	158	BROWNSAUTO		68.04	0.00	
09/08/2014	AP00256968	Chlorine/acid/pool supplies	Bothe State Pa	00041551	25498	DIAMONDQUA		605.11	0.00	
09/08/2014	AP00256968	Central Valley-August 2014	Cust #NAPACORP	00041560	219	CENTRALVAL		514.27	0.00	
10/06/2014	AP00257935	Steve's Hardware-Sept 2014	Acct #31248	00045360	1222	STEVESHARD		853.23	0.00	
10/06/2014	AP00257935	Brown's Auto- Sept 2014	Acct #8537	00045365	158	BROWNSAUTO		229.03	0.00	

2,269.68 0.00
 Beginning Balance: 2,518.14
 Total Activity: 2,269.68
 Ending Balance: 4,787.82

Account 53400 - Minor Equipment/Small Tools

09/08/2014	AP00256968	Grainger - locks	Acct #88253849	00041531	30995	GRAINGERIN		452.30	0.00	
------------	------------	------------------	----------------	----------	-------	------------	--	--------	------	--

Total For 53400 - Minor Equipment/Small Tools

452.30 0.00
 Beginning Balance: 547.66
 Total Activity: 452.30
 Ending Balance: 999.96

Account 53600 - Special Departmental Expense

Report ID: GLS7505
Bus. Unit: NAPCG-County of Napa
Fund: 8500 N C Parks & Open Space Distr
Dept: 8501008Parks-State Parks

GENERAL LEDGER DETAIL TRANSACTIONS
For Fiscal Year 2015
Period 3 to 4

Page No. 19
Run Date 10/07/2014
Run Time 14:30:37

Program:

Journal Date	Journal ID	Journal Description	Voucher Desc	Reference	Vendor ID	Name	Seq	Debit	Credit	Balance	
09/08/2014	AP00256968	Chino-camp host name tags	Reimbursement	00041535	23180	CJYIPASSOC		142.56	0.00		
Total For 53600 - Special Departmental Expense								142.56	0.00		
								Beginning Balance:		1,960.99	
								Total Activity:		142.56	
								Ending Balance:		2,103.55	
Account	54500	- Taxes and Assessments									
Account	54500	- Taxes and Assessments									
								0.00	0.00		
								Beginning Balance:		455.35	
								Total Activity:		0.00	
								Ending Balance:		455.35	
TOTAL EXPENSE								9,302.04	0.00	32,088.68	
=====											
TOTAL FOR PROGRAM								37,293.96	0.00	77,366.23	

Park Report 2014 for the month of September
Submitted by: Ranger Sandy Jones and Jeanne Marioni

Bothe-Napa

Our summer hosts have moved on and the fall hosts are in. We will have a smaller staff now that school has started.

The pool will be open as long as we have good weather (mid-October).

Sept 10 – We met again with CSPs re the Visitor Center Project to repair the entrances. Plans for the project have been signed off by the Fire Marshal so the PEF is moving along. Plans are being reviewed by ADA folks.

Our Cemetery Committee met with the state park Accessible Trails Coordinator, Landscape Architect, Archaeologist, Maintenance Chief, District Supervisor, Park Ecologist and one other staff members to discuss issues regarding the proposed Pioneer Cemetery project.

The Accessible Trails Coordinator will prepare the PEF. It will take about 6 months to get approval. The ADA trail and ADA parking will be funded and developed by State Parks. Due to concern for breeding season of migratory birds, the work must be done in fall and winter. If all goes well, that could be fall of 2015. The ecologist has some concern about possibility of rare plants in the area but should not be a real problem.

The archaeologist observed obsidian fragments, which might indicate potential Native American artifacts that will effect trail construction. Top 6 inches of soil may be disturbed but deeper penetration is problematic. The archaeologist also confirmed our observations that there are probably several other grave sites that have not been formally identified.

Replacement of the family plot fencing is considered maintenance and no PEF is necessary. We are to replace kind with kind - redwood instead of pressure treated Douglas fir.

We have \$10,000 in grant money to spend and another \$2,000 budgeted. We are considering making the ADA benches in-house with staff and a few volunteers. That way most of the grant funds can be used to purchase the interpretative panels, the most expensive part of the project.

A couple alterations were made to the cabin plans - occupancy information needed to be included prior to Fire Marshall approval.

Bothe's road project has been approved. Tillman's will be the contractor. In late September and October sections of the road and shoulders in the day use area will be resurfaced. The road through "Yurtville" and up to the camp hosts residences will also be resurfaced. Then all will be stripped. This project is being paid for using the governor's matching grant funds.

DGS (Department of General Services) has yet to approve the roof projects and the window for doing the roof work is narrowing (only until mid October).

The park needs a tractor. Got one? We have a potential donor and are seeking a tractor that would save HUGE amounts of time and effort for hardworking staff.

Bale Grist Mill

Rob and staff made emergency repairs to the water wheel and replace a broken arm – only 31 more to go!!



Chain saw station - We built a new, well organized area for storing, cleaning and repairing our chain saws in the tool shed.



Sept 4th – We hosted the Calistoga Rotary Club. They held their regular meeting at the mill and also listened to a talk about who we are and what we are doing in the parks. Then they enjoyed a mill tour, saw an amazing power point presentation about our parks, and enjoyed a sack lunch at the picnic tables under the oaks with the best view of the water wheel! They want to help us with work projects, have offered marketing and architectural services, and a donor considering a match of NVSPA funds to repair the waterwheel has stepped forward.

May 3rd – NVSPA will host a pancake breakfast for members and volunteers. The Calistoga Rotary has offered their griddle trailer – perfect for a nice outdoor breakfast under the oaks!

Sept 6 Harvest Dinner was a success! We met our goal - 150 tickets sold. We had fantastic help from Bill Fisher, our volunteer lighting expert, who took on the huge job of lighting over the dinner tables that makes our evening so wonderful.



Holbrook Mitchell and Teresa, mill supporters!

Napa County Regional Park and Open Space District

Plan of Projects

Status Report

13-Oct-14

<u>Name of Project</u>	<u>Description</u>	<u>Status</u>
Bay Area Ridge Trail Tuteur Loop	Assignment of Tuteur Loop Ridge Trail easement from the Bay Area Ridge Trail to the District	The Bay Area Ridge Trail Council obtained a donated easement from the Tuteur family and constructed a section of Bay Area Ridge Trail adjacent to Skyline Park. The Council wishes to transfer this easement to the District. Staff for the District and Council have gathered all the relevant documents, and initiated discussion with the Tuteur family to determine if there are any issues or amendments that should be considered. Next steps are to complete legal review of the documents, make amendments if warranted, obtain the consent of the Coastal Conservancy (who funded the trail construction), and then execute the assignment. Staff will resume work on transferring the easement to the District once the option agreement for purchasing a portion of the Kirkland Ranch is executed.
Bay/River Trail -- American Canyon to Napa	An 8+ mile recreational trail between the cities of American Canyon and Napa generally following the Napa River and interior levees of associated wetlands.	Phase Two--Green Island Road to Soscol Ferry Road Questa has largely completed a revised draft PUC permit application for a public crossing of the SMART tracks. SMART, NRCA and the PUC have verbally agreed to allow the Road railroad crossing. LSA Associates has completed a biological survey for the Fagan Marsh area; based on the results, DFG has indicated they do not want the trail alignment to follow the levee on the north side of Fagan Marsh; District staff is reviewing the feasibility of an alternative alignment. After 4 years of back and forth, in July 2014 DFW informed the District that it would comply with the BCDC condition for public access north of Green Island Road by removing a fence and graveling the surface of the existing levee, despite concerns about this alignment expressed by the Napa County Airport and the FAA. DFW put this project out to bid in late August.
Phase Three--Soscol Ferry Road to Napa Pipe	<u>The construction contract was awarded by the Board on September 8, 2014. The Caltrans encroachment permit permission to use a parcel owned by Napa Redevelopment Partners as a construction staging area have been approved. The Notice to Proceed was issued on October 6, 2014. Construction is to be completed within 45 working days.</u>	
Berryessa Estates	Acquire 480 acres next to Berryessa Estates from BLM at no fee through their Recreation and Public Purpose Act procedure. Would serve as a wilderness park for local residents eventually be the northern trailhead for a trail between Berryess Estates and Pope Canyon.	The District in 2009 applied to BLM for a no-fee transfer of this property to the District for the no-fee transfer of this property; while this transfer has received conceptual approval by BLM staff, the formal approval has dragged; several meetings have been held over the past three years to try and speed to process, but BLM staff has so far had higher priorities. CDF crews did extensive fire break work in 2009 through 2011 to protect the residences next to the BLM land. The Fire Marshall and the Pope Valley Volunteer Fire Department have added a proposal to construct a fire substation on a corner of the property. The Fire Marshall has identified funding for the fire station, and the County Board of Supervisors is now strongly supportive. The District has completed the donation to the District of a small, 0.2 acre property that provides critical access to the northeast corner of the property. District staff in January 2013 met with the Napa County Fire Marshall and the the Calfire Battalion Chief for the area and agreed to jointly advocate for BLM action. In February staff talked with BLM and was assured that processing of the transfer was now beginning. BLM did a series of site visits June-August, 2013. The Bureau of Reclamation in June 2013 asserted that Reclamation has property rights such that BLM is not permitted to transfer the property. BLM is now projecting the transfer will be complete by the end of this calendar year. In late August Reclamation determined they still retained jurisdiction, but they have committed to completing the transfer in the same time frame as BLM would have. Staff has submitted additional materials to Reclamation which is now processing the permit. Reclamation provided a draft agreement to the District in February 2014 which will lead to Reclamation eventually transferring its interests in the property; District staff responded with comments to the draft in early March 2014.
Berryessa Vista	Planning and stewardship of this 224 acre wilderness park.	Volunteers working with the District have completed detailed GIS mapping showing all existing roads, creek crossings, vista points and potential campsites. Continuing damage by off-road vehicles trespassing on the property was noted. The District sent a letter was sent to all property owners in that area introducing the District, explaining the deed restriction prohibiting off road vehicles, and asking for their cooperation. Since then there has been less observed damage, although the problem is not resolved. Staff was planning on installing a gate to restrict OHV access, but this has proven infeasible. After observing more OHV damage in the summer of 2013, staff is exploring options other than a gate to prevent unauthorized OHV use. The latest plan is to install remote cameras in an attempt to determine who is causing the damage. No other work is anticipated until Lake Berryessa Trail planning is completed, as that is a key step in gaining overland access to the property. District staff has been meeting with Reclamation, their consultants and interested parties on the trail planning and prioritization. Staff in late June 2014 toured an adjacent parcel with the owner of the property; <u>in September the owner indicated they are interested in selling the property for addition to Berryessa Vista Wilderness Park. The Land Trust of Napa County will obtain the appraisal, and the District and Land Trust will coordinate on the purchase of the property, subject to approval by the Board of Directors once the appraisal is complete.</u>

<p>Blue Ridge/Berryess Peak Trail</p> <p>Obtain right of way and construct trail to provide public access to extensive federal lands on Blue Ridge and to Berryessa Peak</p>	<p>Obtained donated trail easement from the Ahmann family to close gaps between existing public lands on Blue Ridge. A Negative Declaration and Use Permit hearing was approved December 16, 2009 by the County Planning Commission. An Operations and Management Plan has been approved by the property owner and the District. BLM staff on April 11th inspected the proposed trail alignment where it crosses BLM land. District and BLM staff met on August 5, 2011 to discuss BLM review of this project. BLM's biologist inspected the alignment on September 17, 2011. There have been volunteer trail building work parties have been held numerous times between 2011 and the present, and the trail is now done except for signage and a fence crossing. District staff met with Fish and Game on June 15, 2012 to discuss signage at the trailhead on DFG property, and in November 2012 submitted signage language for DFG review. Staff contacted DFG (now DFW) in February of 2013, again in early April, and again in late summer to determine the status of their review. In January 2014 DFW staff responded with an alternative entry sign design, and accepted our fence stile design. Volunteers installed the fence stile in March 2014. The trail can be officially opened as soon as DFW approves the sign design.</p>
<p>Camp Berryessa</p> <p>Redevelopment of former Boy Scout Camp into a group/environmental education camp.</p>	<p>CEQA and NEPA review is complete, as is the Use Agreement between the District and Reclamation. A grant for \$50,000 to help with construction has been provided by the Mead Foundation, together with a \$1.5 million grant from the State Coastal Conservancy. A new water well was dug in October 2012--production is great, and quality is acceptable with minor treatment. Reclamation completed their review of the 90% plans and had a very positive meeting with District staff in late March 2014. The 100% plans were submitted to the District and Reclamation in early July 2014 and were verbally ok'd in mid August. To meet budget constraints, work on the planned black water leach field will be deferred to phase two or it may be deleted altogether. The project went out to bid in late July 2014, and interest among potential bidders is very high. A required job walk was held on August 21 and eighteen separate potential bidders turned out. <u>Due to the earthquake and a resulting delay in County permit processing, the bid opening has been pushed back yet again. We're now scheduled to open bids on Monday Oct 20th, and we expect to actually hit that date. Construction is still slated to start in fall 2014 and to end by July 15, 2015. We have had fruitful initial conversations with Ron Critchley, a retired County engineer, about serving as our construction manager & inspector on the project.</u>The Coastal Conservancy has agreed to extend the grant until January 1, 2016, giving us a little bit of breathing room on what would otherwise have been an exceptionally tight construction schedule; this will hopefully drive project costs down a bit.</p>
<p>District Non-profit Foundation</p> <p>Organize a non-profit foundation to raise funds for District projects</p>	<p>The District Board has approved the goals, objectives and basic structure for a non-profit foundation to assist the District with fundraising. Formation of the foundation will likely be timed to the opening of Camp Berryessa.</p>
<p>Lake Hennessey North Shore Trails</p> <p>Would open up several miles of existing dirt access road, and construct approximately 1 mile of new single track trail, into a loop trail system on the north side of Lake Hennessey, and connecting to the planned Moore Creek Open Space Park trail system.</p>	<p>In November, 2009 the Napa City Council directed city staff to work with the District to finalize an agreement for the proposed Hennessey trails. The District approved a Mitigated Negative Declaration on February 14, 2011. A final lease agreement and operations plan was approved by the District Board in August 2012, and by the City Council in September 2012. Work was completed on the connector trail to Moore Creek in June 2013 and public response to the new trail has been very positive. A plan for fencing and signage improvements along the Hennessey north shore has been accepted by the Director of the Water Division. Installation of City-required fencing was completed in mid-April of 2014 and a crew of 12 hearty volunteers completed the installation of required signage and two kiosks on the weekend of May 17th. Volunteers in August installed wayfinding signs and improved a horse trough, <u>and on September 13, 2014 removed a defunct suspension bridge, as part of our agreement with the City of Napa. Some signs still need to be designed and installed. Lake Hennessey North Shore Trails is scheduled to formally open with a ribbon cutting on October 18, 2014.</u></p>
<p>Moore Creek Park Development</p> <p>Development of open space park on 673 acres acquired by the District adjacent to City of Napa watershed lands at Lake Hennessey to protect habitat, provide recreational trails, and overnight camping facilities.</p>	<p>The park opened on June 30, 2013. The eastern boundary survey and fencing project was completed June 2014. Construction of the remainder of the Valentine Vista Trail was completed by the Forest Trails Alliance in April 2014. With the help and support of the County Fire Department and County communications technicians, the District has installed an emergency communications radio and antenna at the Ranch House (which has neither landline nor cellular phone service). <u>A minor trail reroute and some boundary fencing is planned for as the next volunteer project, in November 2014 assuming there is some rain beforehand.</u></p>
<p>Oat Hill Mine Trail</p> <p>Various improvements to the historic Oat Hill Mine Road</p>	<p>The litigation holding up this project has been successfully concluded. Several of the trail sign posts have been vandalized and will need to be replaced. The District is continuing to work with Tuleyome on a project to clean up the Twin Peaks and Corona Mines, in the hopes this may enable the District to safely open the northern Oat Hill Mine Trail for public use. A volunteer crew did erosion control work on the trail in January 2013. Staff and volunteers in February 2013 to did a comprehensive evaluation of erosion issues on the trail, and experts from the RCD joined staff for another evaluation in early April. The City of Calistoga and CalTrans have restarted discussions about constructing a roundabout at the intersection of Highway 29 and Silverado Trail; the District is tracking these discussions to ensure that whatever design as adopted will provide adequate and safe access to the Oat Hill Mine Trail. The Bay Area Ridge Trail did some cleanup and minor improvements in late October 2013 to the staging area, and the lower 4 miles of the OHMT was dedicated as part of the Ridge Trail on November 10, 2013. In recent months staff has observed extensive unauthorized construction of banks, ramps, jumps and new trails for mountain bicyclists; staff is attempting to determine who is doing the work.</p>
<p>Oat Hill Mine Trail</p> <p>Transfer of 40 acre parcel from BLM</p>	<p>The District in 2008 applied to BLM for a non-fee transfer to the District of a 40 acre parcel at Maple Springs on the Oat Hill Mine Trail; this application is pending. Staff met with BLM in February 2011 to discuss how to speed up this transfer; another meeting with the same topic was held August 5, 2011. The District is still waiting on BLM to process the application.</p>
<p>Rector Ridge/Stags Leap Ridge Trail</p> <p>Construction of staging area and 6+ miles of Ridge Trail climbing east from Silverado Trail near Rector Creek.</p>	<p>CEQA on this project was completed several years ago--staff has prepared a draft update to the Negative Declaration due to the passage of time since the original approval. The project concept has been approved by the District Board, and was positively viewed by the Veterans Home administration. However, Veterans Home staff had been having difficulty figuring out what approval process is needed, because of ongoing discussions at the state level about the appropriate roles and future programs for the Veterans Home, and then key management staff at the Veterans Home retired in November 2010, so progress was delayed pending the filling of their vacant positions. The District will restart the process when other project priorities are under control.</p>

<p>Skyline Park Protection Purchase of Skyline Park from the State</p>	<p>Three past legislative efforts to authorize sale to the County failed due to unrelated disagreements between the state legislature and administration. Separately, the County in September 2009 approved a new park overlay zone and an updated Master Plan for Skyline Park. A fourth legislative effort by Assemblymember Evans in 2010, sponsored by Napa County and supported by the District, was approved by the legislature and signed by the Governor. The County and state General Services agreed on an appraisal process for determining the fair market value purchase price, the County retained an appraiser acceptable to the State, and a draft appraisal was prepared. In late April 2012 the state indicated they did not accept the value as determined by the appraisal and negotiations stalled. A Draft EIR was released in late September 2013 for the proposed expansion of the adjacent Syar Quarry. The District Board approved comments on the DEIR at its October 2013 meeting. <u>The Final EIR is expected to be released in October or November of 2014.</u></p>
<p>Spanish Valley, Crystal Flats, and Stone Corral Planning for open space donated by Bob and Evalyn Trinchero</p>	<p>The District took full possession of the properties on January 1, 2012. Staff met with key community leaders from Lake Berryessa Estates on February 6 and March 6, 2011. A public session was held April 21st at the Pope Valley Farm Center. The District has negotiated an easement across the District's Stone Corral property to resolve one of the clouds on the title to this land; this easement was approved by the Board at its October meeting, and has now been finalized and recorded. Staff met with the LBEPOA Board many times in 2011-2013 to discuss use of the Crystal Flats and Stone Corral areas. District staff has prepared a draft agreement between the District and the Association, which the Association has informally rejected. The well serving Spanish Valley was repaired in November 2013. The District also sealed up an abandon dry well bore discovered on the property. A group of 10 boyscouts GPS'd old ranch roads and 4-wheel drive tracks on the Spanish Valley property for us over the weekend of April 26-27 so that we can create a map of existing roads and trails. A contract for archeological surveying (a required part of the CEQA process) was completed by Tom Origer and Associates in June, 2014. Staff completed a preliminary survey of the Spanish Valley access road in late July 2012 and, while legal access to the property has been established, it does not appear that the existing road is located within the Spanish Valley Trail easement. In early January 2014 staff learned the affected parcels are for sale. Staff's cash offer to purchase half of the property in mid March was rejected and we have decided to be patient while the property owner attempts to find a better buyer (as we think it unlikely that there is one). In February 2013 several no trespassing signs were installed in response to some evidence of illegal OHV use. The Crystal Flats sign was immediately removed and the lock on the gate removed; a more secure temporary lock has been installed, and staff is researching a new gate that will exclude ATV's and motorcycles while allowing hikers, bicyclists and equestrians. The District is partnering with Tuleyome to investigate and come up with the trail alignment connecting Spanish Valley to the Pope To Putah Trail on BLM land which is under construction by Tuleyome. An abandoned trailer in Spanish Valley was removed in July 2014 at no cost to the District using an abandoned vehicle program administered by the County. The Butts Canyon fire did not reach District property, but CDF graded several emergency roads and firebreaks through Spanish Valley. <u>CDF did some remediation work after the fire to address grading damage.</u></p>
<p>State Parks Operate Bothe-Napa Valley State Park and the Bale Grist Mill State Historic Park</p>	<p>The District, with assistance from the Napa Valley State Parks Association took over management of the parks on April 1, 2012. A County permit for the pool was obtained in July and the pool was reopened immediately thereafter. The state completed installing 3 yurts in October 2012. The District has installed 7 additional yurts. Numerous volunteer projects have been organized (PG&E event improving the Mill, firewood splitting, hazardous tree removal, mowing, pool cleaning, native plant garden maintenance, historic orchard restoration, lots of trash removal, and in September/October a footbridge on the History Trail was repaired by the St Helena Kiwanis). A volunteer forestry management group has been formed and the District has acquired a boom truck and other equipment in support of their mission. Utility service accounts have been transferred from the state to the District. Work on an improved recycling system is nearly complete. Every septic tank in the park has been pumped clean, and sewer lines were located and cleared of root blockages. Two additional failed septic tanks were discovered in March and pumped clean. Nearly \$270,000 in gifts, grants and pledges have been obtained to assist with improvements at the parks. The District and State Parks have finalized an agreement regarding the "found" state money that provides up to \$537,800 in State funds being granted to the District to cover some salaries and two capital improvement projects (replacement roofs and AC overlay to the picnic area road). The deadline for using these funds was extended in June 2014, so the District will have time to fully utilize the grant. The District is sponsoring SB 170 (Wolk) which would exempt the mill from state food processing facility requirements so that flour from the mill can be sold as a food item; the bill has passed the Senate and all Assembly committees, but unfortunately in late July 2013 the Department of Public Health announced their opposition to the bill. After meeting with DPH, it appears they may be willing to agree to a workable compromise; this will take time to explore, so we have made the bill a two-year bill. Staff will be meeting with the author and Governor's office staff in late July. A contract to prepare architectural plans for the repair of the cabins was awarded in December 2013; the plans were submitted in February 2014 for State Parks approval. In March 2014 the district was approached by several organizations and individuals requesting that the District consider taking over management of Robert Louis Stevenson State Park; after approval from the Board, staff in June 2014 submitted a proposal to State Parks to manage some aspects of RLS; this proposal has received favorable response from the District Superintendent and her immediate superiors, and is now being reviewed by others within State Parks. A free admission day including the dedication of the Ridge Trail/Vine Trail junction was held on July 27, 2014.</p>
<p>Vallejo Lakes Possible purchase of 1100 acres of surplus Vallejo Water District lands, of which 200 acres are located in Napa County</p>	<p>Discussions between the District, the Land Trust of Napa County, the County of Solano and the Solano Land Trust indicate a common desire to work together to purchase this property adjacent to Skyline Park. The City Council of the City of Vallejo has officially authorized staff to pursue surplus of the property. The City of Vallejo has hired an appraiser to prepare an estimate of the property's fair market value, but this has not yet been released. The District GM, together with the County of Solano EO, in February 2012 each sent letters to the City of Vallejo formally expressing interest in the property and requesting notification per state law of any planned surplus of the property. Sale of the property by the City has been delayed because of complications related to questions about how best to supply water to residents in Green Valley. The Trust for Public Land has expressed interest in assisting with the purchase of this area. Staff from the District and its partners met with the Vallejo City Manager in April 2014; the surplus process has become more complicated and the City does not anticipate any action in the near future, but meanwhile the City Manager appears open to working with us to figure out a mutually beneficial outcome. Staff had a very interesting meeting with City of Vallejo water division staff and a tour of Lake Curry in late May. The Lake Curry property can only be described as a jewel, and the City of Vallejo would clearly like to divest it. District staff is presently exploring a broad array of options, from an agreement under which the City would retain title and responsibility for the water system while the District would take over land management at the lake to outright purchase of the property by the District or its partners.</p>
<p>Vine Trail A Class I bicycle/pedestrian path extending from Calistoga to the Vallejo Ferry Terminal sponsored by the Vine Trail Coalition, of which the District is a participating member.</p>	<p>The District has entered into an MOU with the Vine Trail Coalition to provide assistance as requested by the Coalition in receiving funds, preparing plans and environmental documents, constructing and operating the trail. The District, the Bay Area Ridge Trail, the San Francisco Bay Trail and the Vine Trail Coalition have prepared a joint Case Statement for the combined trail network for fundraising purposes. The District on February 5, 2010 submitted an appropriations request for FY 2011 to Senator Feinstein, and a similar request to Congressman Thompson on February 26, 2010 on behalf of the Vine Trail Coalition. The District in April 2013 approved and sent a letter of support for the City of Calistoga's request for a grant from the Coastal Conservancy to plan the trail through Calistoga. The Board President in early June 2014 sent a letter of support for a Vine Trail federal "Tiger" grant to help construct the section of trail between Yountville and Napa. The District continues to coordinate with the Vine Trail on plans to route the Vine Trail through Bothe-Napa Valley State Park. A joint Vine Trail/Ridge Trail dedication event was held at Bothe on July 27, 2014.</p>

Completed Projects

Bay Area Ridge Trail Realignment Amendment to the proposed alignment of the Bay Area Ridge Trail extend north to the Oat Hill Mine Trail	In December of 2012 the Bay Area Ridge Trail Council approved the proposed realignment of the Ridge Trail through Napa County as requested by the District.
Bay/River Trail -- American Canyon to Napa Phase I Phase One--Euclptus Drive to Green Island Road	Construction of approximately 5 miles of Class I bicycle and pedestrian path in the vicinity of American Canyon along the Napa River was completed in April 2012, in partnership with the City of American Canyon, Department of Fish and Game and Napa Vallejo Waste Management Authority. A formal opening ceremony was held June 2, 2012.
Berryessa Vista Acquisition	Purchase of 224 acres from the Land Trust of Napa County for use as a public park completed in early 2008 using State Prop 12 funds.
Connolly Ranch	Construction of patio, restrooms and cooking facilities completed in 2008 using State Prop 12 funds.
Oat Hill Mine Trail	The Oat Hill Mine Trail was formally opened in May Of 2008, after a major volunteer work party doing signage installation, brush removal and erosion control.
Historic ROW Analysis Study to determine location and status of historic road Rights-of-Way and whether they have value as non-motorized recreational trails	Staff has completed a comprehensive review of historic rights-of-way, and is now focusing attention on those which have greatest potential.
Linda Falls	Conservation easement accepted in spring 2008 from Land Trust of Napa County to provide additional protection for this 39 acre property, which is owned by the land trust
Master Plan Development The Master Plan for 2008-2013 was approved in January 2009	
Master Plan Update First scheduled update to the Master Plan adopted in January 2009	Board adhoc committee appointed. Methodology for doing update has been agreed upon. Project was delayed due to competing demands on staff time (primarily the effort to keep Napa's state parks from closing. A draft update has been prepared by staff working with the Board ad hoc committee for the Master Plan update, and released by the Board at the April 9, 2012 meeting for public comment. The plan update was adopted by the Board at its June 2012 meeting.
Milliken Reservoir Trails and Picnic Area Feasibility Study Would construct approximately 3 miles of Bay Area Ridge Trail plus additional feeder and loop trails, along with a staging and picnic area	The feasibility study has been completed, and accepted by the Board of Directors. The Napa City Council in November, 2009 approved city staff recommendation to hold off on the Milliken Reservoir trails project until the Hennessey trail project is up and running.
Moore Creek Open Space Park Acquisition of 673 acres in the Moore Creek Watershed completed in December 2008.	
Napa River Ecological Reserve Improvements Parking area paved, and rock barrier installed to control vehicular access in 2007. Trash enclosure constructed and entry signs restored by volunteers in 2008. Deteriorated kiosk removed in 2008. The District in July 2008 assumed the County's role in managing the preserve under the joint management agreement with DFG. A new maintenance contract with the non-profit organization Options 3 was started in January 2009. The old deteriorated information kiosk, which had become a serious eyesore, was removed in November 2008.	
Napa River Ecological Reserve Restoration This multi-year project resulted in the removal of the bulk of the invasive teasel that had taken over the 5 acre meadow at the entrance to the Reserve, and the construction of a short native plant interpretive trail. Work was done by volunteers, students, and paid contractors. In doing this work, several thousand students received a day of environmental education about native and invasive plants and riparian ecology.	
Napa River Flood Control Easement Conservation easement accepted by District in 2007 to facilitate Flood District project and grant funding	
Newell Preserve Improvements Provide on-site water supply for group campground for cattle	As part of the arrangement with the land trust on the District's purchase of Berryessa Vista, the land trust was willing to use some of the proceeds from the transaction to fund a well pump and distribution system at the Preserve. However, the first well drilled by the City of American Canyon came up dry. The City has dropped plans for digging any more test wells.
River to Ridge Trail Enhancements Installation of animal silhouettes along the entryway fence illustrating the types of birds and mammals that can be found in the area completed by Eagle Scout candidate in 2008. In November 2008 five Valley Oak trees were planted at the Highway 221 entrance to the trail with the assistance of a volunteer from CNPS.	
River to Ridge Trail Lot line adjustment to legalize River to Ridge Trail as constructed (it curenly encroaches on private	Deeds accomplishing the adjustment in property boundaries between Syar and the State have been recorded.
River to Ridge Trail Entrance Enhancements A new information kiosk was installed at the entrance in December 2008 as part of a Boy Scout project. Several Live Oak seedlings were donated by CNPS and have been planted at the entrance to improve its appearance.	

River to Ridge Trail	Correct drainage problems to trail can be used year-round.	Two volunteer work weekends in March and April and two more in May of 2010 were organized by the District to clear brush, improve drainage, and surface about 300 feet of the trail with quarry fines to control problems with mud. Volunteers completed additional work in August 2011.
Skyline Park Road and Trail Improvements	Erosion control work on Lake Marie Road, and paving of campground loop road, completed in 2007 using State Prop 12 funds.	
Skyline Park Concessionaire Agreement Renewal	District staff negotiated renewal of concessionaire agreement on behalf of the County. The renewal involved changes to the fee schedule and amendments to and approval of subagreements with three non-profit partner organizations.	
Skyline Park Trail Improvements	Major volunteer event to reroute and repair trails	Staff worked with SPCA and V-O-CAL to sponsor a weekend work party on October 15-17, 2010. Approximately 110 volunteers worked to reroute and repair trails experiencing serious erosion problems. SPCA is donating \$1,000 toward expenses.
Skyline Park Facility Improvements	Partner-sponsored improvement include a second greenhouse and a covered equestrian arena.	The proposals for a second greenhouse and a covered arena were approved by the Department of General Services and by the County Board of Supervisors. The sponsors of these projects are now raising funds for implementation.
South Napa Wetlands Habitat Area	Transfer to the District those wetlands owned by the Napa County flood control district between the Napa River, Highway 29 and Newport Drive for use as habitat and nature-based recreation.	Transfer was approved in concept by the flood control district, and Park District staff prepared the first draft of a transfer agreement. Subsequently, attorney's for the flood district concluded it would be better from their perspective for the flood district to retain ownership of the property, due to their ongoing maintenance obligations.
State Parks	Assume management of Bothe-Napa Valley State Park and keep it and the Bale Grist Mill open	The District took over operations of the parks on April 1, 2012, and have a 5 year agreement with the State to continue operating the parks.
Trichero Open Space Acquisition	Donation of 3,400 acres of open space to the District by Bob and Evalyn Trinchero	The donation was completed on December 29, 2010. A related granting of an access easement to the Lake Berryessa Resort Improvement District was completed in mid-January 2011.
Wild Lake Ranch	Assist land trust with planning and possible joint management of trails, camping and picnic areas.	The District participated in the development of a strategic plan for the property, together with other public lands in the area, that was led by the Land Trust of Napa County. The land trust has decided, at least for the near term, to manage the Wildlake-Duff property itself.