



**Napa County Regional Park  
and Open Space District**

Harold Kelly  
*Director, Ward One*

Tony Norris  
*Director, Ward Two*

Michael Haley  
*Director, Ward Three*

Dave Finigan  
*Director, Ward Four*

Barry Christian  
*Director, Ward Five*

## AGENDA

### BOARD OF DIRECTORS REGULAR MEETING

Monday, October 14, 2013 at 2:00 P.M.

1195 Third Street, Third Floor, Napa, Calif. 94559

#### General Information

Agenda items will generally be considered in the order indicated below, except for Set Matters, which will be considered at the time indicated. Agenda items may from time to time be taken out of order at the discretion of the President.

The meeting room is wheelchair accessible. Assistive listening devices and interpreters are available through the District Secretary. Requests for disability related modifications or accommodations, aids, or services may be made to the Secretary's office no less than than 48 hours prior to the meeting date by contacting 707.259.8603.

Any member of the audience desiring to address the District on a matter on the Agenda, please proceed to the rostrum and, after receiving recognition from the President, give your name, address, and your comments or questions. In order that all interested parties have an opportunity to speak, please be brief and limit you comments to the specific subject under discussion. Time limitations shall be at the discretion of the President.

State law requires agency officers (Directors and Officers) to disclose, and then be disqualified from participation in, any proceeding involving a license, permit, or other entitlement for use, if the officer has received from any participant in the proceeding an amount exceeding \$250 within the prior 12 month period. State law also requires any participant in a proceeding to disclose on the record any such contributions to an agency officer.

All materials relating to an agenda item for an open session of a regular meeting of the Board of Directors which are provided to a majority or all of the members of the Board by Board members, staff or the public within 72 hours of but prior to the meeting will be available for public inspection, on and after at the time of such distribution, in the NCRPOSD Office at 1195 Third Street, Suite 210, Napa, California 94559, Monday through Friday, between the hours of 8:00 a.m. and 4:30 p.m., except for County holidays. Materials distributed to a majority or all of the members of the Board at the meeting will be available for public inspection at the public meeting if prepared by the members of the Board or County staff and after the public meeting if prepared by some other person. Availability of materials related to agenda items for public inspection does not include materials which are exempt from public disclosure under Government Code §§6253.5, 6254, 6254.3, 6254.7, 6254.15, 6254.16, or 6254.22.

#### 1. Call to Order and Roll Call

## 2. Public Comment

*In this time period, anyone may address the Board of Directors regarding any subject over which the Board has jurisdiction but which is not on today's posted agenda. In order to provide all interested parties an opportunity to speak, time limitations shall be at the discretion of the President. As required by Government Code, no action or discussion will be undertaken on any item raised during this Public Comment period.*

## 3. Set Matters

2:00 pm          Oath of Office for Director Karen Bower Turjanis

## 4. Administrative Items

- a. Consideration and potential approval of Minutes of the Board of Directors regular meetings of September 9, 2013 and special meeting of September 30, 2013.
- b. Consideration and potential adoption of comments on the Draft Environmental Impact Report for the proposed Syar Napa Quarry Expansion.
- c. Update on Bothe-Napa Valley State Park and the Bale Grist Mill State Historic Park.
- d. Consideration and potential approval of Agreement № 13-14 with PSOMAS, to reinstate a contract for Camp Berryessa engineering services which lapsed on June 30, 2013.
- e. Receipt of report on expenditures, encumbrances, donations, and grants approved by District staff.
- f. Review of the District Projects Status Report

## 5. Announcements by Board and Staff

*In this time period, members of the Board of Directors and staff will announce meetings, events, and other matters of interest. No action will be taken by the Board on any announcements.*

## 6. Agenda Planning

*In this time period, members of the Board of Directors and staff will discuss matters for possible consideration at future meetings. Other than to determine whether and when such matters should be agendized, no action will be taken by the Board on these items unless specifically noted otherwise.*

Next Board Meeting: Regular Board Meeting of November 4, 2013  
(note change from normal second Monday of each month)

## 7. Adjournment



**Napa County Regional Park  
and Open Space District**

Vacant  
Director, Ward One

Tony Norris  
Director, Ward Two

Michael Haley  
Director, Ward Three

Dave Finigan  
Director, Ward Four

Barry Christian  
Director, Ward Five

## MINUTES

### BOARD OF DIRECTORS REGULAR MEETING

Monday, September 9, 2013 at 2:00 P.M.

1195 Third Street, Third Floor, Napa, Calif. 94559

1. Call to Order and Roll Call

Directors present: Michael Haley, Barry Christian, Dave Finigan, and Tony Norris.

Staff present: John Woodbury, Chris Apallas, Tracy Schulze, Chris Cahill, Melissa Frost

2. Public Comment

None

3. Set Matters

- a. Presentation by County of Napa and District Auditor-Controller Tracy Schulze and discussion of audit results for FY 2012-13

Tracy Schulze gave the presentation. No Action taken.

- b. Discussion and potential approval of amendments to the FY 2013-14 budget

Directors voted to find that the proposed amendment is not a project under CEQA and approved budget amendments as recommended.

DF-MH-BC-TN

4. Administrative Items

- a. Consideration and potential approval of Minutes of the Board of Directors regular meetings of June 10, 2013 and August 13, 2013 and special meeting of August 23, 2013.

Minutes for June 10, 2013 were approved as corrected.

DF-TN-MH-BC-HK

X A X

Minutes for August 12, 2013 and August 23, 2013 were approved as presented.

MH-BC-DF-TN

- b. Receipt of report on expenditures, encumbrances, donations, and grants approved by District staff.  
John Woodbury gave the report, including the addition of a contract with Don Hays Construction in the amount of \$22,339.20 to construct the Valentine Vista Trail connector.
- c. Consideration and potential approval of Amendment № 2 to Agreement № 11-18 with PSOMAS, to expand the scope of work to include development of a Storm Water Pollution Prevention Plan and increase total allowable compensation by \$8,095.  
Directors voted to find that the proposed amendment is not a project under CEQA and approved Amendment № 2 to Agreement № 11-18, to expand the scope of work and increase total allowable compensation by \$8,095 to \$194,754.  
MH-DF-BC-TN
- d. Oral update on Bothe-Napa Valley State Park and the Bale Grist Mill State Historic Park.  
John Woodbury gave the report and shared that the Bale Grist Mill Dinner had 211 guests in attendance.
- e. Review of the District Projects Status Report  
John Woodbury gave the report with discussions on Napa River Bay Trail, Lake Berryessa Estates, Camp Berryessa, Moore Creek, Spanish Valley, State Parks, Vallejo Lakes, and the Oat Hill Mine Trail.

#### 5. Announcements by Board and Staff

- John Woodbury announced the District has been named as a responsible agency in a lawsuit filed against MTC and ABAG, because the district is in line to receive a grant from the Priority Conservation Area program administered by MTC under the One Bay Area plan.
- Barry Christian shared that the Bale Grist Mill dinner was a success. He also shared that the American Canyon Open Space Advisory Committee is has developed a recommendation for providing public access to the Newell Preserve.
- Barry Christian shared that the Syar Quarry Draft EIR is out in circulation and suggested that the District Board organize a hike on the property to understand the issues.
- Tony Norris noted the Ag Respect program led by the Vine Trail has been posted on their website.

#### 6. Agenda Planning

Next Board Meeting: Special Meeting Monday, September 30, 2013, at 1:00 pm  
Regular Meeting Monday, October 14, 2013 at 2:00 pm

7. Adjournment

Adjourned to the Special Park and Open Space District meeting of September 30, 2013.

---

TONY NORRIS, Board President

ATTEST:

---

MELISSA FROST, District Secretary

Key

Vote: TN = Tony Norris; MH = Michael Haley; DF = David Finigan; BC = Barry Christian

The maker of the motion and second are reflected respectively in the order of the recorded vote.

Notations under vote: N = No; A = Abstain; X = Excused



**Napa County Regional Park  
and Open Space District**

Vacant  
Director, Ward One

Tony Norris  
Director, Ward Two

Michael Haley  
Director, Ward Three

Dave Finigan  
Director, Ward Four

Barry Christian  
Director, Ward Five

## MINUTES

### BOARD OF DIRECTORS SPECIAL MEETING

Monday, September 30, 2013 at 12:00 P.M.  
1195 Third Street, Third Floor, Napa, Calif. 94559

1. Call to Order and Roll Call

Directors present: Michael Haley, Barry Christian, Dave Finigan, and Tony Norris.  
Staff present: John Woodbury, Chris Cahill, Melissa Frost

2. Public Comment

None

3. Administrative Matters

a. Interviews with applicants (times subject to change)

12:30	Karen Bower Turjanis
12:50	Phill Blake (call in)
1:10	Dane Zehrung (not confirmed)
1:30	Mark Lucas
1:50	Alex Pader
2:10	Patrick Band
2:30	Jeff Dodd
2:50	Eve Kahn
3:10	Dorothy Glaros
3:30	John Glaser

b. Consideration and potential appointment of Director for Ward 1

Directors interviewed applicants, excepting Dane Zehrung, who was not available, and voted to appoint Karen Bower Turjanis to the Board of Directors, for Ward One of the Napa County Regional Park and Open Space District, commencing on October 14<sup>th</sup> 2013.

BC-MH-DF-TN

4. Adjournment

Adjourned to the Regular Park and Open Space District meeting of October 14, 2013.

---

TONY NORRIS, Board President

ATTEST:

---

MELISSA FROST, District Secretary

Key

Vote: TN = Tony Norris; MH = Michael Haley; DF = David Finigan; BC = Barry Christian

The maker of the motion and second are reflected respectively in the order of the recorded vote.

Notations under vote: N = No; A = Abstain; X = Excused



Napa County Regional Park  
and Open Space District

## STAFF REPORT

Date: May 13, 2013  
 Agenda Item: 4.B  
 Subject: Consideration and potential adoption of comments on the Draft Environmental Impact Report for the proposed Syar Napa Quarry Expansion.

### Recommendation

Authorize the Board President on behalf of the District to submit comments, as discussed in this memo, on the DEIR for the Syar Quarry expansion project

### Environmental Determination

The proposed action is not a project as defined by 14 California Code of Regulations 15378 (State CEQA Guidelines) and therefore CEQA is not applicable.

### Background

In response to the Notice of Preparation of an Environmental Impact Report for the expansion of the Syar quarry adjacent to Skyline Wilderness Park, the District Board in July 2009 requested that analysis of the project consider various potential aesthetic, noise, air quality, ground water and biological impacts (see attached).

Staff has reviewed the Draft EIR issued in August 2013, and has the following observations:

- (1) Trail Relocation. Syar has proposed to pay for the relocation of a short section of the Skyline Trail so that it would no longer encroach on Syar property. The Skyline Park Citizens Association believes that the new alignment proposed by Syar is not workable, and so earlier this year proposed a new realignment. In addition to the section directly affected by the proposed Syar quarry expansion, the Association also identified an improved route for the next section of the trail to the south, and asked that Syar pay for this section as well.

In the judgment of District staff, the realignment proposed by the Association for the lower section of the trail is far superior to the Syar-proposed alignment, but the realignment of the next section of the trail to the south is not really related to the Syar quarry expansion project, and while meritorious, Syar should not be held accountable for paying for improvements to this section of trail.

It should be noted that under the County's lease of the property from the State, State approval is required for any significant improvements in the park. Therefore, once the preferred



location of the trail is settled, it will need to be forwarded to the State Department of Real Estate for their review. At this time there is no reason to believe that it would be a problem to get State approval. However, the State may charge for this review, so any review charges they may impose should be included in the cost of the trail relocation paid for by Syar.

- (2) Change to Project. When the Notice of Preparation was circulated in 2009, most of the Pasini property was shown as an “exclusion area” where no mining would take place. The project has since then been revised, so that much of the Pasini property would now be available for mining (see attached Figures 3-3 and 3-5). In particular, Syar proposes to remove the knoll and small ridge along the northern boundary of the Pasini property. This knoll and ridge currently provides an effective barrier between the quarry and the park. With the removal of this knoll and ridge, it appears that the central portion of the wilderness part of Skyline Park would be directly exposed to quarry noise, dust and odor. The existing visual barrier between the park and the Pasini property would also be removed along approximately 750 feet of the Pasini/Park boundary.
- (3) Noise. The DEIR indicates (Figures 4.11-35 and -36) shows projected quarry noise levels as high as 70 dBA along the edge of Skyline Park, and noise levels over 50 dBA over much of the central portion of Skyline Park. Given that this portion of Skyline Park is essentially a wilderness, where current background noise levels are very low, it is surprising that the DEIR concludes there would be no significant noise impact on Skyline Park.
- (4) Hydrology and Biology. As proposed, the pond located on the Pasini property would be retained, but the expanded mining operation would eliminate what appears to be the primary source of water for the pond. If eliminated, it seems likely the pond would dry out and disappear for most of each year. This potential impact does not appear to have been analyzed in the DEIR.
- (5) Alternatives. The DEIR identifies two potential alternatives to the project as proposed. The “Reduced Footprint/Conservation Alternative” would allow the same annual rate of quarry production, but would reduce the geographic extent of the quarry. However, there is no site plan associated with this alternative, so it is difficult to understand how it translates on the ground. If adopted, this alternative at first glance would appear to significantly reduce impacts on the park, while still allowing a dramatic increase in the rate of production (from 0.81 to 2.0 million tons per year extracted, for a 247% increase.). Syar’s proposed project would allow for at least 35 years of quarry operation. The DEIR does not indicate whether or to what degree the Reduced Footprint/Conservation Alternative would reduce the life of the quarry to less than the current 35 year projection.
- (6) Assurances. Several areas along the border between the quarry and the park are proposed as exclusion areas where no mining will take place. These exclusion areas provide important buffers between the quarry and the park. However, there appears to be no mechanism to assure these buffers remain for the long term. It would greatly strengthen protection for Skyline Park to have these exclusion areas permanently protected through a conservation easement.

#### Recommendations:

- (a) Support the realignment proposed by the Skyline Park Citizen’s Association for the lower (northern) section of the Skyline Trail, but not the upper (southern) section of the trail.

(b) Request a more detailed description of the “Reduced Footprint/Conservation Alternative”, including a more thorough comparison of the proposed project to this alternative in terms of visual, noise, dust and odor impacts, as well as what effect it would have on the long-term life of the quarry operation. A site map showing the physical extent of this alternative would also be very helpful for assessing its value.

(c) Technical Comments:

- (i) The DEIR analysis of visual impacts (especially from Sites C10 and C11, as illustrated on pages 4.1-19 and 4.1-20) shows the proposed project will be highly visible from some of the wilderness portions of the park, yet the DEIR concludes this is not a significant impact. How does this conclusion mesh with County General Plan policies listed on pages 4.1-7 to 4.1-9?
- (ii) Figure 4.8-2 showing the quarry watershed and direction of water flows does not show that the northern portion of the Pasini property currently flows into Skyline Park. Under the proposed project this area would be excavated and water that currently flows into Skyline Park would in the future have its direction reversed and thus drain into what is left of Arroyo Creek. The Figure should be corrected.
- (iii) Figure 4.8-6 showing groundwater flows does not include groundwater flows for most of the Pasini property. All of the Pasini property that is proposed for mining should be analyzed for groundwater flows and whether/how the quarry expansion would affect groundwater resources in the park.
- (iv) The proposed project removes some of the water sources for the pond on the Pasini property. What impact will this have on the pond?
- (v) The FEIR should consider requiring conservation easements for the “Exclusion Areas” so that these areas are in fact protected for the long term.
- (vi) Page 4.14-5 (first paragraph) states that other than the lower Skyline Trail, trails that encroach onto Syar property (see Figure 4.14-1, inset B, C, and D) would not interfere with the proposed quarry expansion, and therefore Skyline Park would be granted a temporary easement or license to retain those trails. Since those trails are located in designated “Exclusion Areas”, which are not supposed to be developed, requiring the grant of a permanent trail easement should have no impact on the quarry, but would provide more protection for Skyline Park. This option should be considered.
- (vii) According to Figure 4.11-1, of the eight noise monitoring locations shown, none were located in the wilderness portions of Skyline Park. Without knowing ambient noise levels in these areas, how was it possible to conclude that noise impacts on the park are less than significant?
- (viii) Mitigation 4.4-9 requires the developer to permanently preserve 111 acres of Oak Woodland off-site, but the mitigation is permitted to be located anywhere in Napa County. There is general agreement in the conservation community that mitigation habitat should generally be as close to the project impact site as possible. Since there are several potential opportunities to acquire fee title or easements for Oak Woodlands in the immediate vicinity (including Skyline Park itself, as well as other privately-owned parcels to the east and south of Skyline Park, it would be appropriate to tighten the mitigation measure to indicate that priority will be given to nearby parcels before considering more remote locations.

In addition, the mitigation requirement does not appear to have a time frame or deadline. For habitat mitigation to be most effective, it should be in place before the impact occurs. Therefore, the FEIR should also include a deadline by when the preservation of the off-site acres will be completed.



Napa County Regional Park  
and Open Space District

## **STAFF REPORT**

Date: July 13, 2009  
Agenda Item: 4.B  
Subject: Consideration of and potential approval of comments on the scope of the Environmental Impact Report to be prepared by the County of Napa for the Syar Napa Quarry Expansion and Surface Mining Permit.

### Recommendation

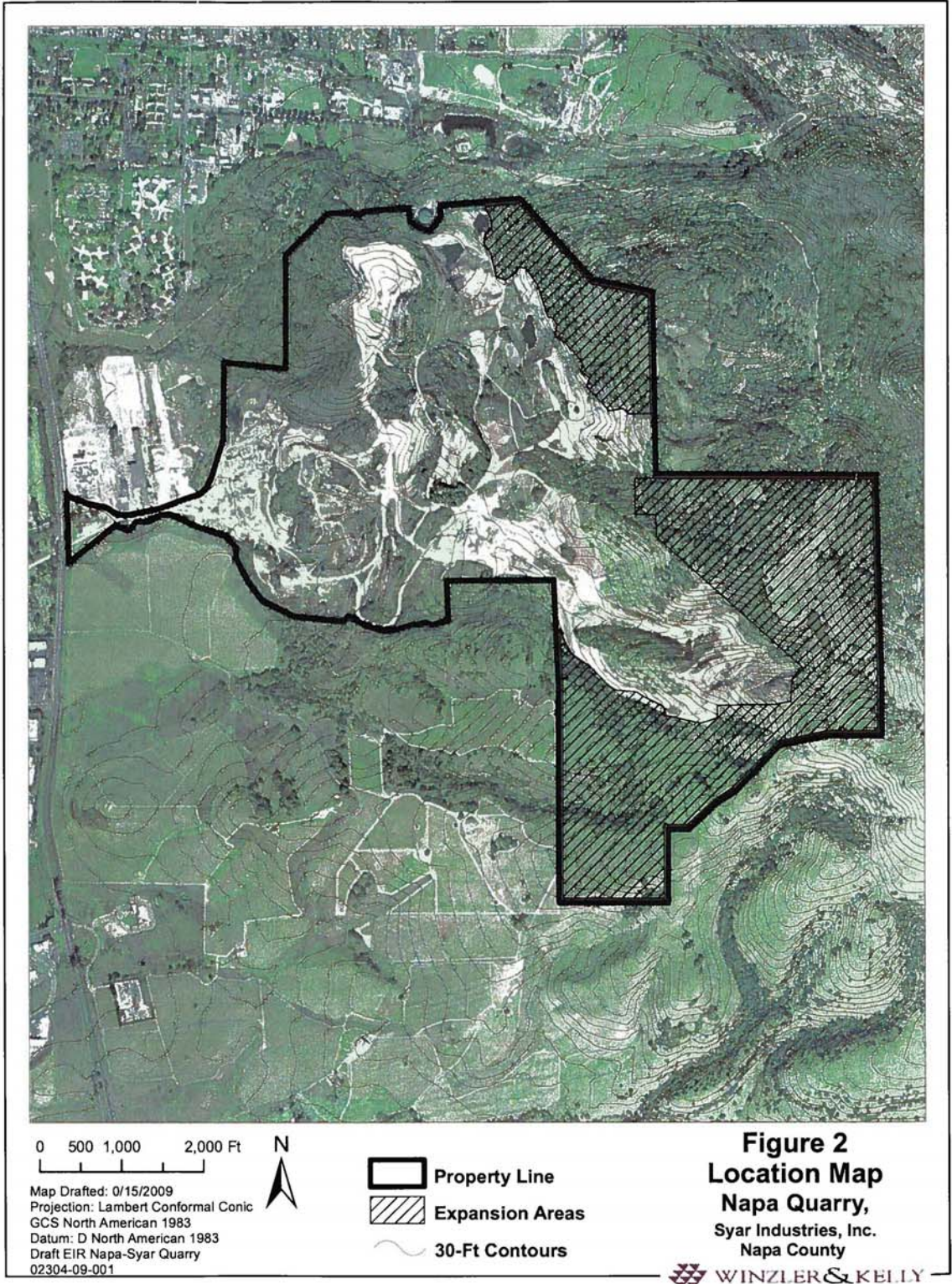
Provide direction to staff on potential District comments on the scope of the Environmental Impact Report for the Syar Napa Quarry Expansion and Surface Mining Permit.

### Background

The Syar Napa Quarry adjacent to Skyline Wilderness Park has applied for a permit to expand the quarry. As a first formal step in the consideration of the permit, the County of Napa has issued a Notice of Preparation of an Environmental Impact Report (EIR) under the California Environmental Quality Act, and has requested comments in determining the scope of the EIR. Comments are due by July 14, 2009.

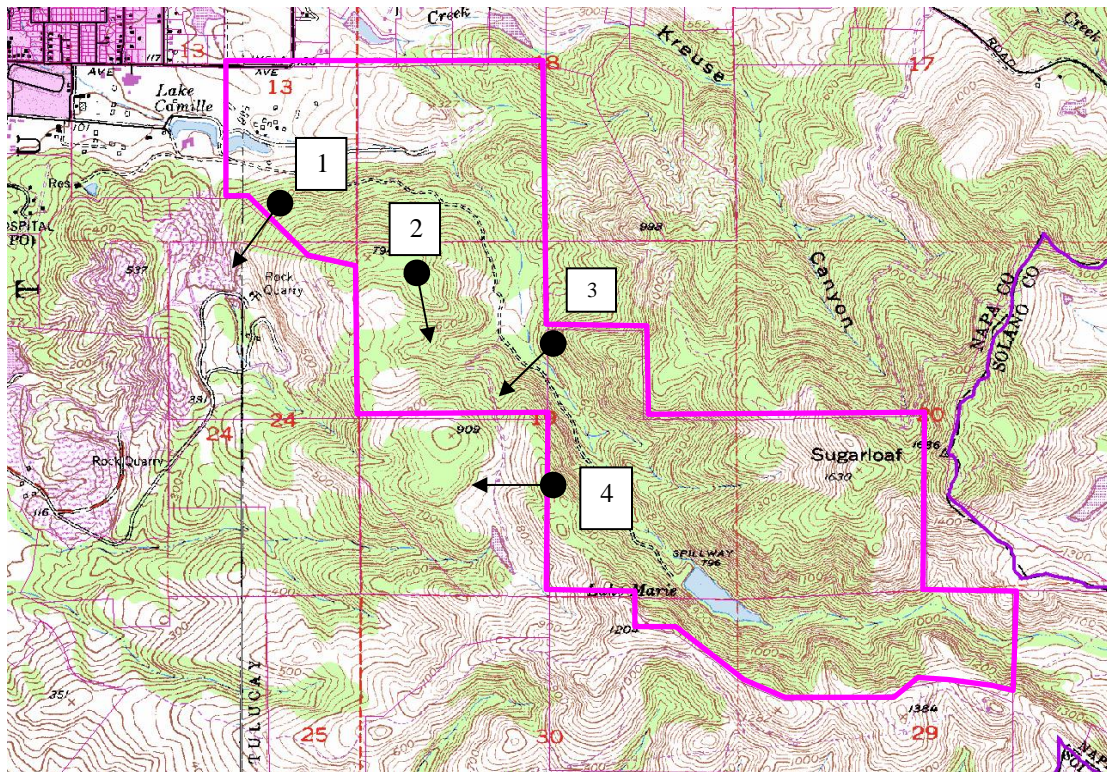
Skyline Wilderness Park is located on land owned by the State of California which is leased to the County of Napa. The County in turn has a concessionaire agreement with the Skyline Park Citizens' Association to operate the park. The District does not at this time have any formal responsibilities related to the park itself. However, the District does have a general responsibility to assist with the preservation of significant open space lands and the promotion of nature-based recreation within the County. It is also possible that at some future point the District may acquire formal responsibilities related to the management of the park. For these reasons, staff believes it would be appropriate for the District to provide input into the scoping process for the EIR.

A map showing the proposed quarry expansion area is attached. Draft comments on the proposed scope of work are also attached for Board consideration.



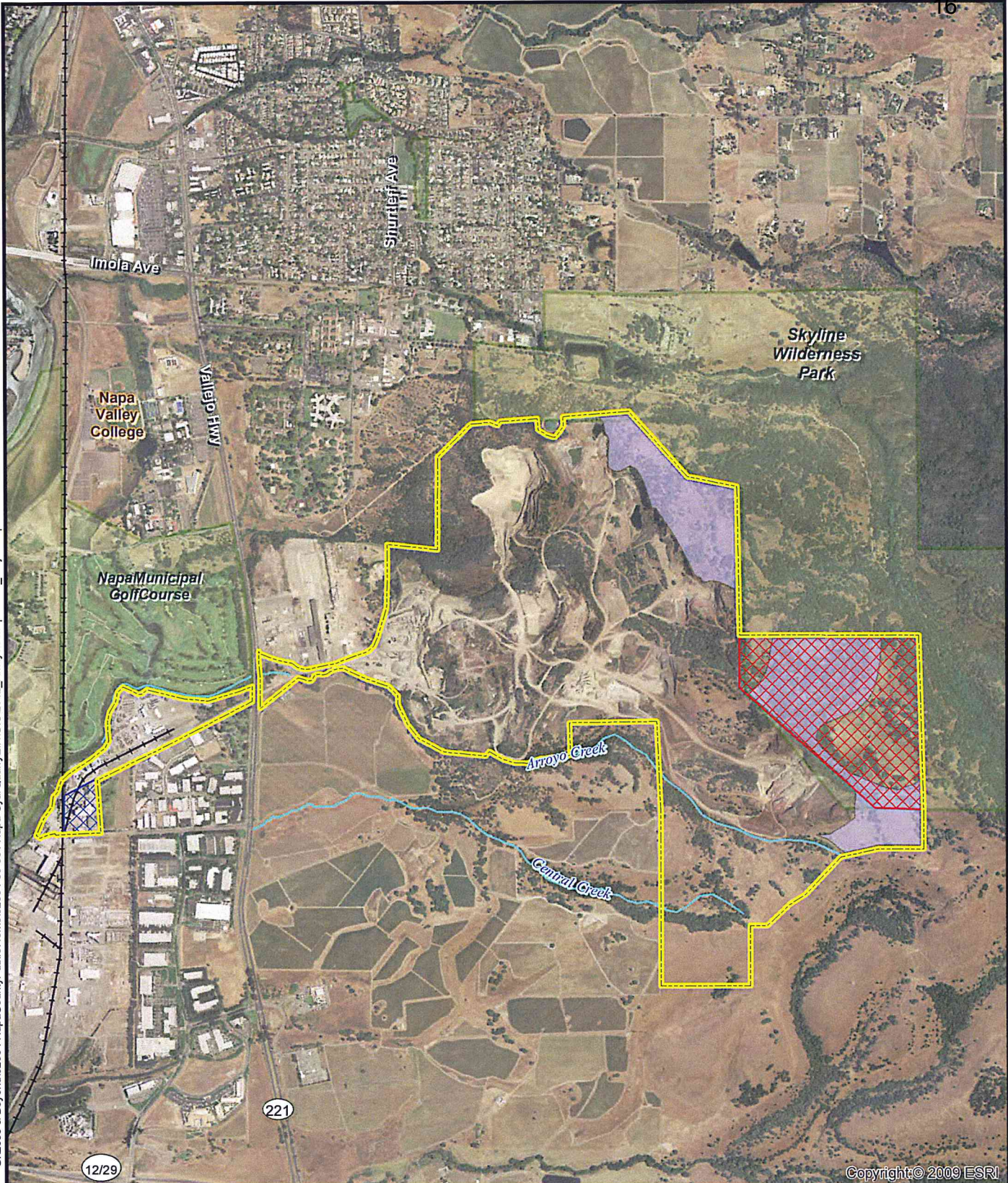
### Potential Comments on the Draft Scope of Work Syar Napa Quarry Expansion

- (1) Aesthetics. The scope of work proposed a visual analysis/simulation from nine locations, one of which is Skyline Park. This should be modified to include at least four locations within Skyline Park, as shown below. Below the map is a Google Earth view showing the proposed mining area that would be visible from point #1.



2. Noise. Ambient noise levels within Skyline Park should be established at representative locations, including the same four locations recommended for visual impact analysis. This should then be compared to potential noise increase from quarry trucks, other equipment and blasting. Impacts to be considered should include aesthetic impacts, disturbance to animals and birds, and the potential to cause a safety hazard for equestrians.
3. Air quality. The EIR should evaluate the potential for fugitive dust emissions to travel over and onto Skyline Park, not just the overall potential for dust emissions and their generalized impact of health.
4. Groundwater. The proposed quarry expansion would involve deep cutting into the strata within 50 feet of the park boundary. The potential for this to lower the water table within the park, and thereby reduce water available for trees and other plants within the park, should be evaluated.
5. Biology. The impact of expanded quarry operations on mammals and birds that utilize the park should be specifically discussed, particularly for species that are easily disturbed by human activity.

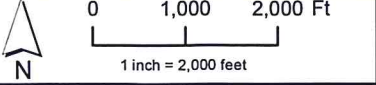
G:\2005 & Beyond\02304 NapaCountyPublicWorks\02304-09-001 Napa-SyarQuarryEIR\GIS\2012\_Analysis\Maps\F3-3\_ProjectExpansionAreas.mxd - 8/22/2013 - 10:42:23 AM



Copyright © 2009 ESRI

Cartography: GLD

- Project Site
  - Pasini Parcel
  - Benson Kaiser Road, LLC (Pacific Coast Steel)
  - Expansion Areas
  - Parks/Open Space
- Railroads



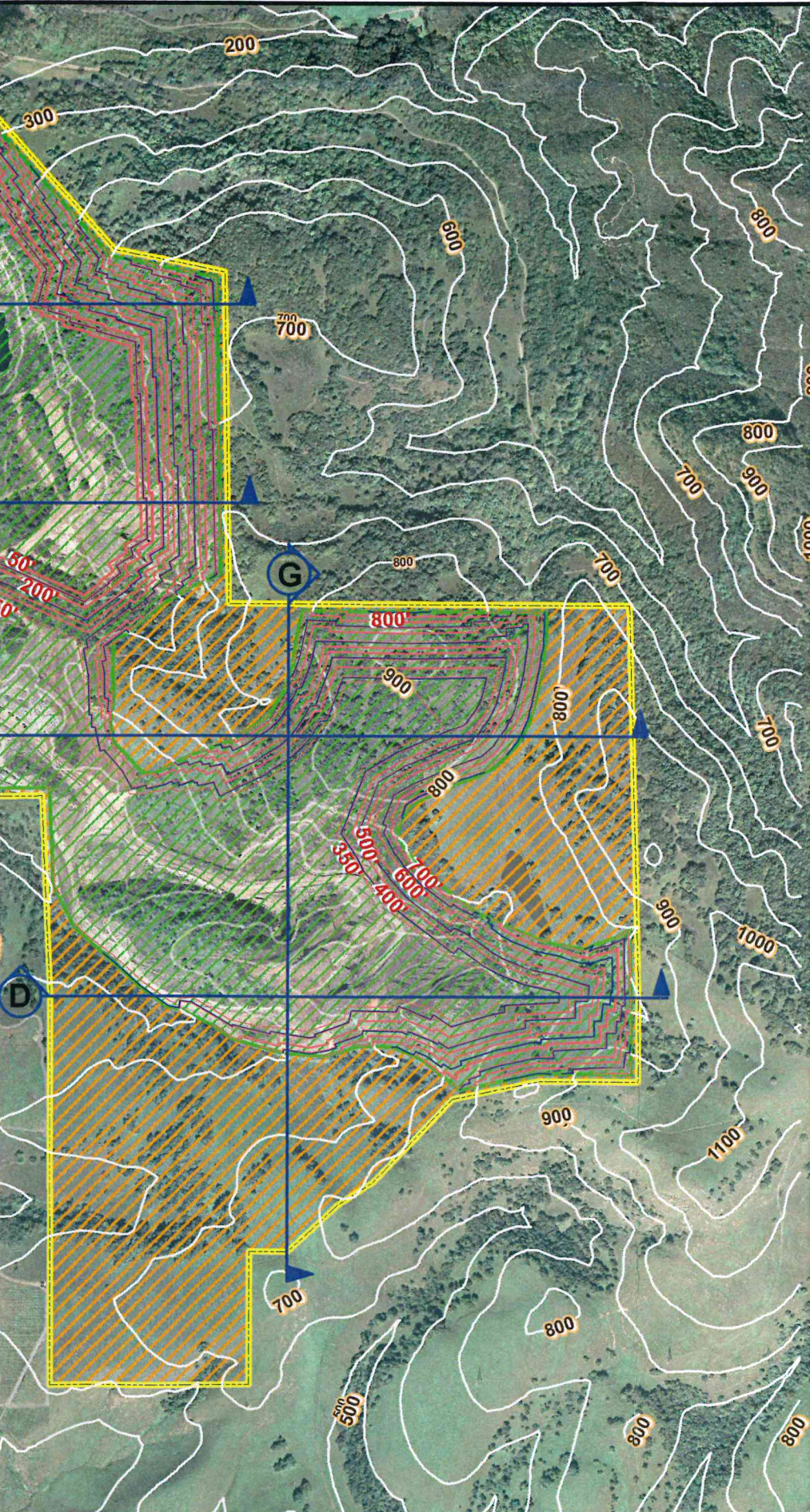
Sources: ESRI - tele atlas









**WINZLER & KELLY**  
 www.w-and-k.com

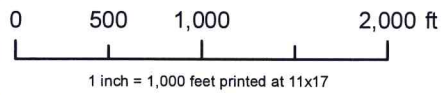
**Figure 3-3**  
**Mining and Reclamation**  
**Expansion Areas**

Draft EIR  
 Syar Napa Quarry Expansion





-  Project Site
-  Exclusion Area  
(See Figure 3-4)
-  Excavation Limits
-  Processing Area
-  Existing Road  
(to be maintained)
-  Proposed Finished  
Grade Contours
-  Existing Surface  
Contours
-  Profile Cut Line  
(see Figure 3-6 for Profiles)



Sources: Napa County GIS; 2007 Napa County Orthophoto 0.5 ft resolution.

**WINZLER & KELLY**  
www.w-and-k.com

Cartography BFV/AF/GLD	Date 7/29/2013	Project # 02304-09-001
---------------------------	-------------------	---------------------------

**Figure 3-5**  
**Limits of Vertical Excavation**

**Draft EIR**  
**Syar Napa Quarry Expansion**

© Winzler & Kelly



Napa County Regional Park  
and Open Space District

## STAFF REPORT

Date: October 14, 2013  
 Agenda Item: 4.C  
 Subject: Update on Bothe-Napa Valley State Park and the Bale Grist Mill State Historic Park.  
 By: Park Manager Sandy Jones and Outreach Coordinator Jeanne Marioni

### Recommendation

Receive the August Report

### Discussion

#### **Bothe-Napa**

**Campground** - We have had a busy summer at Bothe. All summer, the campground has been full on the weekends and nearly full during the week.

**Visitor Center** - The visitor center remains open 5 days a week.

September 4<sup>th</sup> many DPR folks came to Bothe for a site visit regarding our planned project to repair the entrances to the visitor center using the \$35,000 CSPF grant money and our park staff. The repairs to the entrances will be considered maintenance. The DPR/ADA folks indicated verbal approval of our project as outlined in the grant proposal. We will submit a PEF for written approval.

Another DPR/ADA visit to Bothe is scheduled for October 2<sup>nd</sup> to investigate site conditions and refine the scope of an access improvement project in the park. This second site visit is intended to look closely at each location in Bothe where ADA work is planned which includes campground restroom buildings, the day use area, and making the visitor center ADA accessible. State Parks will pay for this long-term project.

**Yurts** – We are working on the path to the last ADA accessible yurt. DPR has requested a few small fixes to the ADA paths and we are completing that. When done, photos will be taken of the paths and forwarded to DPR for approval. The Fire Marshall gave verbal approval over the telephone; we await written approval.

The Odd Fellows have sponsored an Eagle Scout project to build 3 food lockers for the yurts. Go team!

**Wright House** – We are nearing completion on this project. We are getting bids to refinish the wood floors. The broken corner tiles around the kitchen sink will be replaced. New tiles have been ordered and we have a volunteer to install them. The interior paint is coming along. The windows require **a lot** of detail work and there are **many** windows. After the yurt project is completed we will begin painting the exterior of the Wright House.

**Historic Cabins** – During the September 4<sup>th</sup> site visit, DPR/ADA also looked at the historic cabins and made some initial suggestions. We will hire an architect to produce formal drawings for the PEF.

**Pool** – We have had a successful season. The pool has been enjoyed by many. September 14<sup>th</sup> will be our last Saturday.

**Cemetery** - We have received approval for Gary Shannon, state park landscape architect, to assist with the drawings for the cemetery paths. He will work with ADA to correctly categorize the type of pathways required. Submission of the PEF will follow.

## **Bale Grist Mill**

**Harvest Dinner** – Our annual fundraiser dinner on September 5<sup>th</sup> was a huge success selling over 200 tickets at \$100 each - twice as many paid guests as last year. We have received many compliments for a most “magical evening”. Although most guests are from St Helena, Calistoga and Yountville, this year we had many more guests from Napa City, American Canyon, Sacramento, Santa Rosa and San Francisco. The silent auction was well organized and quite a success (the total amount made is still being calculated).

In preparation for the Harvest Dinner, lighting along the walkways was installed from the granary to the parking lot. Lighting for the ADA walkway needs to be completed.

The wood benches made by the St Helena Kiwanis folks were great. We were able to provide more outdoor seating for our guests during the silent auction. The benches were easy to move around and looked just right.





**Old Mill Days** (October 5<sup>th</sup> and 6<sup>th</sup>) – We are on schedule. This year’s event just might be the best ever! Be sure you attend – bring friends and family.

**Sturgeons Mill** - Several of the folks from Sturgeon’s Mill showed up for a tour of our mill on August 25<sup>th</sup>. It was a great visit with two of the Sturgeon’s people purchasing tickets for our Harvest Dinner.

**Recycling** – We are hoping to reduce the number of trash cans on the mill grounds by using a couple of recycling bins. We are looking into getting the bins at a reduced price (or free) and using the old metal trash cans as critter proof corn bins under the granary.



Napa County Regional Park  
and Open Space District

## STAFF REPORT

*By:* Chris Cahill, Land Planner  
*Date:* October 14, 2013  
*Item:* 4.d  
*Subject:* Consideration and potential approval of Agreement № 13-14 with PSOMAS, to reinstate a contract for Camp Berryessa engineering services which lapsed on June 30, 2013.

### RECOMMENDATION

- 1.) Find that the proposed amendment is not a project under CEQA.
- 2.) Approve Agreement № 13-14, including the previously-approved scope of work and a cumulative total allowable compensation of \$194,754.

### ENVIRONMENTAL DETERMINATION

The proposed action is not a project as defined by 14 California Code of Regulations 15378 (State CEQA Guidelines) and therefore CEQA is not applicable.

### BACKGROUND

In late 2011, the District contracted with PSOMAS Engineering for the completion of plans and specifications for the construction of Camp Berryessa. The Board has since approved two revisions to the scope of work and total allowable compensation to incorporate the development of: 1.) structural plans for combination shower/restroom buildings (Amendment № 1, March 2013) and 2.) engineered stormwater plans (Amendment № 2, September 2013).

On Monday October 7, 2013 the Auditor's office noted and pointed out to Parks staff that the term of our original agreement with PSOMAS lapsed on June 30<sup>th</sup> of this year. The agreement presently before the Board simply reinstates the previous terms and conditions as amended, with the exception that the contract term would run through June 2015 and continue year-to-year thereafter if necessary. With construction scheduled to take place summer 2014 and project clean up/closeout running for some months thereafter, we do not expect to have to extend the contract past June 2015.



Napa County Regional Park  
and Open Space District

## STAFF REPORT

Date: October 14, 2013  
 Item: 4.E  
 Subject: Receipt of report on expenditures, encumbrances, donations, and grants approved by District staff

### Recommendation

Receive the report.

### Background

Section III.A.(7) of the District By-laws authorizes the General Manager to bind the district for supplies, materials, labor, and other valuable consideration, in accordance with board policy and the adopted District budget, up to \$10,000 for non-construction purposes and up to \$25,000 for construction purposes, provided that all such expenditures are subsequently reported to the Board of Directors. Section III.A.(8) of the By-laws authorizes the General Manager to apply for grants and receive donations, subject to reporting such actions to the Board of Directors.

Attached is a report showing all District expenditures for September 1- October 9, 2013.

In addition to the attached report on expenditures, the General Manager approved the following contracts:

Stephen Bechtel Jr Foundation – 2<sup>nd</sup> grant of \$50,000 for Bothe-Napa Valley State Park Agreement 13-11 - Don Hays Trail Contractor, Inc. - Moore Creek Trail Construction - \$22,339<sup>20</sup>  
 Agreement 13-12 - Cal-Tech Pump Well & Compressor - Spanish Valley Water System Improvements - \$10,956<sup>15</sup>  
 Agreement 13-13 - Carbone’s Custom Painting, Inc. - Moore Creek gatehouse Exterior Repainting - \$9,690<sup>00</sup>

Report ID: GLS7505  
 Bus. Unit: NAPCG-County of Napa  
 Fund: 8500 N C Parks & Open Space Distr  
 Dept: 8500000 Parks-Administration

GENERAL LEDGER DETAIL TRANSACTIONS  
 For Fiscal Year 2014  
 Period 3 to 3

Page No. 1  
 Run Date 10/09/2013  
 Run Time 14:46:59

Program:

Journal	Date	Journal ID	Journal Description	Voucher Desc	Reference	Vendor ID	Name	Seq	Debit	Credit	Balance
Account	52490	-	Other Professional Services						0.00	0.00	
									Beginning Balance:		2,662.21
									Total Activity:		0.00
									Ending Balance:		2,662.21
Account	52705	-	Insurance - Premiums						0.00	0.00	
									Beginning Balance:		1,433.44
									Total Activity:		0.00
									Ending Balance:		1,433.44
Account	52840	-	Permits/License Fees						0.00	0.00	
									Beginning Balance:		-15.00
									Total Activity:		0.00
									Ending Balance:		-15.00
Account	52905	-	Business Travel/Mileage								
	09/25/2013	AP00245476	J. Woodbury-Sept mileage		00898508				164.85	0.00	
Total For	52905	-	Business Travel/Mileage						164.85	0.00	
									Beginning Balance:		290.64
									Total Activity:		164.85
									Ending Balance:		455.49
Account	53100	-	Office Supplies								
	09/25/2013	AP00245476	Chino - survey wheel, technu	Reimbursement-	00898504	23180	CJYIPASSOC		149.03	0.00	
	09/25/2013	AP00245476	J. Woodbury - Linode-web serv	Reimbursement	00898508	19796	WOODBURY,J		431.46	0.00	

Report ID: GLS7505  
 Bus. Unit: NAPCG-County of Napa  
 Fund: 8500 N C Parks & Open Space Distr  
 Dept: 8500000 Parks-Administration

GENERAL LEDGER DETAIL TRANSACTIONS  
 For Fiscal Year 2014  
 Period 3 to 3

Page No. 2  
 Run Date 10/09/2013  
 Run Time 14:46:59

Program:

Journal Date	Journal ID	Journal Description	Voucher Desc	Reference	Vendor ID	Name	Seq	Debit	Credit	Balance
Total For 53100 - Office Supplies								580.49	0.00	
								Beginning Balance:		105.62
								Total Activity:		580.49
								Ending Balance:		686.11
Account 53600 - Special Departmental Expense								0.00	0.00	
								Beginning Balance:		88.94
								Total Activity:		0.00
								Ending Balance:		88.94
TOTAL EXPENSE								745.34	0.00	5,311.19

=====



Report ID: GLS7505  
 Bus. Unit: NAPCG--County of Napa  
 Fund: 8500 N C Parks & Open Space Distr  
 Dept: 8501000 Parks-Moore Creek

GENERAL LEDGER DETAIL TRANSACTIONS  
 For Fiscal Year 2014  
 Period 3 to 3

Page No. 3  
 Run Date 10/09/2013  
 Run Time 14:46:59

Program:

Journal	Date	Journal ID	Journal Description	Voucher Desc	Reference	Vendor ID	Name	Seq	Debit	Credit	Balance
Account	52325		- Waste Disposal Services								
	09/10/2013	AP00244903	United Site 8/21/13-9/17/13	Customer #CAN-	00896357	20925	UNITEDSITE		302.34	0.00	
Total For	52325		- Waste Disposal Services						302.34	0.00	
									Beginning Balance:		1,186.55
									Total Activity:		302.34
									Ending Balance:		1,488.89
Account	52360		- Construction Services								
	09/03/2013	AP00244666	PARK130314Pearson 8/20/13	MOORE CREEK 8/	00895662	34991	PEARSONEXP		10,620.00	0.00	
	09/17/2013	AP00245145	PARK130314Pearson CO#1	CHANGE ORDER #	00897437	34991	PEARSONEXP		7,650.00	0.00	
Total For	52360		- Construction Services						18,270.00	0.00	
									Beginning Balance:		125,510.00
									Total Activity:		18,270.00
									Ending Balance:		143,780.00
Account	52490		- Other Professional Services								
	09/25/2013	AP00245476	Caltest - MC test	Lab Order #N09	00898497	19800	CALTESTANA		45.00	0.00	
Total For	52490		- Other Professional Services						45.00	0.00	
									Beginning Balance:		2,378.21
									Total Activity:		45.00
									Ending Balance:		2,423.21

Report ID: GLS7505  
 Bus. Unit: NAPCG-County of Napa  
 Fund: 8500 N C Parks & Open Space Distr  
 Dept: 8501000 Parks-Moore Creek

GENERAL LEDGER DETAIL TRANSACTIONS  
 For Fiscal Year 2014  
 Period 3 to 3

Page No. 4  
 Run Date 10/09/2013  
 Run Time 14:46:59

Program:

Journal	Date	Journal ID	Journal Description	Voucher Desc	Reference	Vendor ID	Name	Seq	Debit	Credit	Balance
Account	52700	-	Insurance - Liability						0.00	0.00	
									Beginning Balance:		948.45
									Total Activity:		0.00
									Ending Balance:		948.45
Account	52800	-	Communications/Telephone								
	09/17/2013	AP00245145	HughesNet 9/12/13-10/12/13	Acct #DSS88360	00897353	17372	HUGHESNETW		76.59	0.00	
Total For	52800	-	Communications/Telephone						76.59	0.00	
									Beginning Balance:		153.18
									Total Activity:		76.59
									Ending Balance:		229.77
Account	52905	-	Business Travel/Mileage								
	09/23/2013	AP00245363	C CAHILL 9/17 SITE VISITS	9/17 SITE VISI	00898167	24717	CAHILL,CHR		35.03	0.00	
Total For	52905	-	Business Travel/Mileage						35.03	0.00	
									Beginning Balance:		54.24
									Total Activity:		35.03
									Ending Balance:		89.27
Account	53100	-	Office Supplies						0.00	0.00	
									Beginning Balance:		21.60
									Total Activity:		0.00
									Ending Balance:		21.60

Report ID: GLS7505  
 Bus. Unit: NAPCG-County of Napa  
 Fund: 8500 N C Parks & Open Space Distr  
 Dept: 8501000 Parks-Moore Creek

GENERAL LEDGER DETAIL TRANSACTIONS  
 For Fiscal Year 2014  
 Period 3 to 3

Page No. 5  
 Run Date 10/09/2013  
 Run Time 14:46:59

Program:

Journal	Date	Journal ID	Journal Description	Voucher Desc	Reference	Vendor ID	Name	Seq	Debit	Credit	Balance	
Account	53205		- Utilities - Electric									
	09/05/2013	AP00244792	PG&E 7/25/13-8/26/13	Acct #00997592	00896004	945	PAC-GAS-00		130.73	0.00		
Total For	53205		- Utilities - Electric						130.73	0.00		
											Beginning Balance:	88.02
											Total Activity:	130.73
											Ending Balance:	218.75
Account	53250		- Fuel						0.00	0.00		
											Beginning Balance:	61.96
											Total Activity:	0.00
											Ending Balance:	61.96
Account	53350		- Maintenance Supplies									
	09/05/2013	AP00244792	Central Vly-August 2013	Acct #NAPACORP	00896007	219	CENTRALVAL		79.12	0.00		
	09/10/2013	AP00244903	Diamond Quality-chlorine	Acct #55555555	00896349	25498	DIAMONDQUA		185.23	0.00		
Total For	53350		- Maintenance Supplies						264.35	0.00		
											Beginning Balance:	265.91
											Total Activity:	264.35
											Ending Balance:	530.26
Account	53600		- Special Departmental Expense						0.00	0.00		
											Beginning Balance:	278.48
											Total Activity:	0.00

Report ID: GLS7505  
 Bus. Unit: NAPCG-County of Napa  
 Fund: 8500 N C Parks & Open Space Distr  
 Dept: 8501000 Parks-Moore Creek

GENERAL LEDGER DETAIL TRANSACTIONS  
 For Fiscal Year 2014  
 Period 3 to 3

Page No. 6  
 Run Date 10/09/2013  
 Run Time 14:46:59

Program:

Journal Date	Journal ID	Journal Description	Voucher Desc	Reference	Vendor ID	Name	Seq	Debit	Credit	Balance	
								Ending Balance:		278.48	
Account	54500	- Taxes and Assessments							0.00	0.00	
								Beginning Balance:		444.61	
								Total Activity:		0.00	
								Ending Balance:		444.61	
TOTAL EXPENSE								19,124.04	0.00	150,515.25	

Report ID: GLS7505  
 Bus. Unit: NAPCG-County of Napa  
 Fund: 8500 N C Parks & Open Space Distr  
 Dept: 8501001 Parks-Oat Hill Mine Trail

GENERAL LEDGER DETAIL TRANSACTIONS  
 For Fiscal Year 2014  
 Period 3 to 3

Page No. 7  
 Run Date 10/09/2013  
 Run Time 14:46:59

Program:

Journal Date	Journal ID	Journal Description	Voucher Desc	Reference	Vendor ID	Name	Seq	Debit	Credit	Balance	
								0.00	0.00		
										Beginning Balance:	552.73
										Total Activity:	0.00
										Ending Balance:	552.73
TOTAL EXPENSE								0.00	0.00	552.73	

Report ID: GLS7505  
 Bus. Unit: NAPCG-County of Napa  
 Fund: 8500 N C Parks & Open Space Distr  
 Dept: 8501002 Parks-Napa River and Bay Trail

GENERAL LEDGER DETAIL TRANSACTIONS  
 For Fiscal Year 2014  
 Period 3 to 3

Page No. 8  
 Run Date 10/09/2013  
 Run Time 14:46:59

Program:

Journal Date	Journal ID	Journal Description	Voucher Desc	Reference	Vendor ID	Name	Seq	Debit	Credit	Balance
								0.00	0.00	
								Beginning Balance:		212.21
								Total Activity:		0.00
								Ending Balance:		212.21
<hr/>										
Account	52905	- Business Travel/Mileage								
09/25/2013	AP00245476	J. Woodbury - mileage		00898508				13.32	0.00	
Total For 52905 - Business Travel/Mileage								13.32	0.00	
								Beginning Balance:		0.00
								Total Activity:		13.32
								Ending Balance:		13.32
<hr/>										
TOTAL EXPENSE								13.32	0.00	225.53
=====										

Report ID: GLS7505  
 Bus. Unit: NAPCG-County of Napa  
 Fund: 8500 N C Parks & Open Space Distr  
 Dept: 8501003 Parks-Camp Berryessa

GENERAL LEDGER DETAIL TRANSACTIONS  
 For Fiscal Year 2014  
 Period 3 to 3

Page No. 9  
 Run Date 10/09/2013  
 Run Time 14:46:59

Program:

Journal	Date	Journal ID	Journal Description	Voucher Desc	Reference	Vendor ID	Name	Seq	Debit	Credit	Balance
Account	52360		- Construction Services								
	09/12/2013	AP00245009	PARK111814Psomas 7/13	PROJ 6NAP01010	00897035	33202	PSOMAS-001		5,166.00	0.00	
Total For	52360		- Construction Services						5,166.00	0.00	
									Beginning Balance:		0.00
									Total Activity:		5,166.00
									Ending Balance:		5,166.00
Account	52490		- Other Professional Services								
	09/05/2013	AP00244792	PARK131014NVLaborComp 7/13	7/13 BOY SCOUT	00896150	33782	NORTHVALLE		75.50	0.00	
Total For	52490		- Other Professional Services						75.50	0.00	
									Beginning Balance:		0.00
									Total Activity:		75.50
									Ending Balance:		75.50
TOTAL EXPENSE									5,241.50	0.00	5,241.50

Report ID: GLS7505  
 Bus. Unit: NAPCG-County of Napa  
 Fund: 8500 N C Parks & Open Space Distr  
 Dept: 8501005 Parks-Napa River Ecological Rs

GENERAL LEDGER DETAIL TRANSACTIONS  
 For Fiscal Year 2014  
 Period 3 to 3

Page No. 10  
 Run Date 10/09/2013  
 Run Time 14:46:59

Program:

Journal	Date	Journal ID	Journal Description	Voucher Desc	Reference	Vendor ID	Name	Seq	Debit	Credit	Balance
Account	52325		- Waste Disposal Services								
09/17/2013		AP00245145	Upper Vly Disp-Aug 2013	Acct #01-48644	00897347	19694	UPPERVALLE		101.52	0.00	
09/25/2013		AP00245476	United Site 9/12/13-10/9/13	Customer #CAN-	00898502	20925	UNITEDSITE		102.34	0.00	
Total For 52325 - Waste Disposal Services									203.86	0.00	
										Beginning Balance:	977.05
										Total Activity:	203.86
										Ending Balance:	1,180.91
Account	52490		- Other Professional Services						0.00	0.00	
										Beginning Balance:	1,727.21
										Total Activity:	0.00
										Ending Balance:	1,727.21
TOTAL EXPENSE									203.86	0.00	2,908.12



Report ID: GLS7505  
 Bus. Unit: NAPCG-County of Napa  
 Fund: 8500 N C Parks & Open Space Distr  
 Dept: 8501007 Parks-Putah Creek

GENERAL LEDGER DETAIL TRANSACTIONS  
 For Fiscal Year 2014  
 Period 3 to 3

Page No. 11  
 Run Date 10/09/2013  
 Run Time 14:46:59

Program:

Journal	Date	Journal ID	Journal Description	Voucher Desc	Reference	Vendor ID	Name	Seq	Debit	Credit	Balance
Account	52840		- Permits/License Fees								
	09/17/2013	AP00245145	US Bureau of Rec - app fee	Permit Fee-For	00897358	31595	US-BUREAUR		100.00	0.00	
Total For	52840		- Permits/License Fees						100.00	0.00	
									Beginning Balance:		0.00
									Total Activity:		100.00
									Ending Balance:		100.00
TOTAL EXPENSE									100.00	0.00	100.00

Report ID: GLS7505  
 Bus. Unit: NAPCG-County of Napa  
 Fund: 8500 N C Parks & Open Space Distr  
 Dept: 8501008 Parks-State Parks

GENERAL LEDGER DETAIL TRANSACTIONS  
 For Fiscal Year 2014  
 Period 3 to 3

Page No. 12  
 Run Date 10/09/2013  
 Run Time 14:46:59

Program:

Journal	Date	Journal ID	Journal Description	Voucher Desc	Reference	Vendor ID	Name	Seq	Debit	Credit	Balance
Account	52325	-	Waste Disposal Services								
09/10/2013	AP00244903		Upper Vly Disp-Aug 2013	Acct #01-13452	00896355	19694	UPPERVALLE		856.95	0.00	
Total For	52325	-	Waste Disposal Services						856.95	0.00	
									Beginning Balance:		856.95
									Total Activity:		856.95
									Ending Balance:		1,713.90
Account	52490	-	Other Professional Services								
09/05/2013	AP00244792		PARK120814Marioni 7/13	7/13 SERVICES	00896139	33711	MARIONI,JE		1,330.00	0.00	
09/12/2013	AP00245009		PARK120814Marioni 8/13	8/13 SERVICES	00897033	33711	MARIONI,JE		1,140.00	0.00	
Total For	52490	-	Other Professional Services						2,470.00	0.00	
									Beginning Balance:		80.00
									Total Activity:		2,470.00
									Ending Balance:		2,550.00
Account	52525	-	Maintenance-Infrastructure/Lan						0.00	0.00	
									Beginning Balance:		742.00
									Total Activity:		0.00
									Ending Balance:		742.00
Account	52800	-	Communications/Telephone								
09/17/2013	AP00245145		Telepacific-Sept 2013	Acct #133326	00897351	34480	TELEPACIFI		534.87	0.00	

Report ID: GLS7505  
 Bus. Unit: NAPCG-County of Napa  
 Fund: 8500 N C Parks & Open Space Distr  
 Dept: 8501008 Parks-State Parks

GENERAL LEDGER DETAIL TRANSACTIONS  
 For Fiscal Year 2014  
 Period 3 to 3

Page No. 13  
 Run Date 10/09/2013  
 Run Time 14:46:59

Program:

Journal Date	Journal ID	Journal Description	Voucher Desc	Reference	Vendor ID	Name	Seq	Debit	Credit	Balance
Total For 52800 - Communications/Telephone								534.87	0.00	
								Beginning Balance:		532.29
								Total Activity:		534.87
								Ending Balance:		1,067.16
<hr/>										
Account 52825 - Bank Charges										
09/12/2013	0000245066	Heartland credit card fees-WFB		AUG 2013				37.12	0.00	
Total For 52825 - Bank Charges								37.12	0.00	
								Beginning Balance:		95.95
								Total Activity:		37.12
								Ending Balance:		133.07
<hr/>										
Account 52905 - Business Travel/Mileage										
09/16/2013	AP00245109	CHEVRON AUG-2013 USAGE	ACCT 789868664	00897161	12088	CHEVRONPRO		240.12	0.00	
Total For 52905 - Business Travel/Mileage								240.12	0.00	
								Beginning Balance:		0.00
								Total Activity:		240.12
								Ending Balance:		240.12
<hr/>										
Account 53100 - Office Supplies										
09/17/2013	0000245172	Office Depot 8/16/13		BOTHE PARK				248.22	0.00	
Total For 53100 - Office Supplies								248.22	0.00	

Report ID: GLS7505  
 Bus. Unit: NAPCG-County of Napa  
 Fund: 8500 N C Parks & Open Space Distr  
 Dept: 8501008 Parks-State Parks

GENERAL LEDGER DETAIL TRANSACTIONS  
 For Fiscal Year 2014  
 Period 3 to 3

Page No. 14  
 Run Date 10/09/2013  
 Run Time 14:46:59

Program:

Journal Date	Journal ID	Journal Description	Voucher Desc	Reference	Vendor ID	Name	Seq	Debit	Credit	Balance
								Beginning Balance:		0.00
								Total Activity:		248.22
								Ending Balance:		248.22
<hr/>										
Account	53205	- Utilities - Electric								
09/25/2013	AP00245476	PG&E 8/14/13-9/12/13	Acct #21728318	00898479	945	PAC-GAS-00		64.34	0.00	
09/25/2013	AP00245476	PG&E 8/14/13-9/12/13	Acct #67654031	00898483	945	PAC-GAS-00		38.73	0.00	
09/25/2013	AP00245476	PG&E 8/14/13-9/12/13	Acct #18690124	00898490	945	PAC-GAS-00		1,058.47	0.00	
09/25/2013	AP00245476	PG&E 8/14/13-9/12/13	Acct #48314069	00898494	945	PAC-GAS-00		72.05	0.00	
09/25/2013	AP00245476	PG&E 8/14/13-9/12/13	Acct #53600798	00898495	945	PAC-GAS-00		47.97	0.00	
								<hr/>		
Total For 53205 - Utilities - Electric								1,281.56	0.00	
								Beginning Balance:		3,035.17
								Total Activity:		1,281.56
								Ending Balance:		4,316.73
<hr/>										
Account	53210	- Utilities - Propane								
								0.00	0.00	
								Beginning Balance:		128.87
								Total Activity:		0.00
								Ending Balance:		128.87
<hr/>										
Account	53250	- Fuel								
								0.00	0.00	
								Beginning Balance:		482.43
								Total Activity:		0.00
								Ending Balance:		482.43

Report ID: GLS7505  
 Bus. Unit: NAPCG-County of Napa  
 Fund: 8500 N C Parks & Open Space Distr  
 Dept: 8501008 Parks-State Parks

GENERAL LEDGER DETAIL TRANSACTIONS  
 For Fiscal Year 2014  
 Period 3 to 3

Page No. 15  
 Run Date 10/09/2013  
 Run Time 14:46:59

Program:

Journal	Date	Journal ID	Journal Description	Voucher Desc	Reference	Vendor ID	Name	Seq	Debit	Credit	Balance
Account 53330 - Janitorial Supplies											
09/10/2013		AP00244903	Cash & Carry - supplies	Acct #60124600	00896347	34310	CASH&CARRY		282.62	0.00	
Total For 53330 - Janitorial Supplies									282.62	0.00	
										Beginning Balance:	1,655.68
										Total Activity:	282.62
										Ending Balance:	1,938.30
Account 53350 - Maintenance Supplies											
09/05/2013		AP00244792	Central Vly-August 2013	Acct #NAPACORP	00896007	219	CENTRALVAL		2,593.80	0.00	
09/05/2013		AP00244792	H. Smith - Yurt paths	Inv #52006, Bo	00896011	1190	HAROLDSMIT		868.34	0.00	
09/05/2013		AP00244792	Paint Works - traffic paint	Acct #4159 - B	00896015	16605	PAINTWORKS		107.53	0.00	
09/10/2013		AP00244903	Harold Smith-Yurt paths	Bothe Park - I	00896351	1190	HAROLDSMIT		67.91	0.00	
09/10/2013		AP00244903	Harold Smith - yurt paths	Bothe Park - I	00896353	1190	HAROLDSMIT		46.69	0.00	
09/25/2013		AP00245476	Barco - traffic signs	Bothe State Pa	00898505	34815	BARCOPRODU		213.20	0.00	
Total For 53350 - Maintenance Supplies									3,897.47	0.00	
										Beginning Balance:	8,220.61
										Total Activity:	3,897.47
										Ending Balance:	12,118.08
Account 53400 - Minor Equipment/Small Tools											
									0.00	0.00	
										Beginning Balance:	540.35
										Total Activity:	0.00
										Ending Balance:	540.35

Report ID: GLS7505  
 Bus. Unit: NAPCG-County of Napa  
 Fund: 8500 N C Parks & Open Space Distr  
 Dept: 8501008 Parks-State Parks

GENERAL LEDGER DETAIL TRANSACTIONS  
 For Fiscal Year 2014  
 Period 3 to 3

Page No. 16  
 Run Date 10/09/2013  
 Run Time 14:46:59

Program:

Journal Date	Journal ID	Journal Description	Voucher Desc	Reference	Vendor ID	Name	Seq	Debit	Credit	Balance
Account	53600	- Special Departmental Expense						0.00	0.00	
								Beginning Balance:		24.68
								Total Activity:		0.00
								Ending Balance:		24.68
TOTAL EXPENSE								9,848.93	0.00	26,243.91
=====										
TOTAL FOR PROGRA								35,276.99	0.00	191,098.23

## Plan of Projects Status Report

October 14, 2013

<u>Name of Project</u>	<u>Description</u>	<u>Status</u>
Bay Area Ridge Trail Tuteur Loop	Assignment of Tuteur Loop Ridge Trail easement from the Bay Area Ridge Trail to the District	The Bay Area Ridge Trail Council obtained a donated easement from the Tuteur family and constructed a section of Bay Area Ridge Trail adjacent to Skyline Park. The Council wishes to transfer this easement to the District. Staff for the District and Council have gathered all the relevant documents, and initiated discussion with the Tuteur family to determine if there are any issues or amendments that should be considered. Next steps are to complete legal review of the documents, make amendments if warranted, obtain the consent of the Coastal Conservancy (who funded the trail construction), and then execute the assignment. Staff is currently reviewing the easement location to confirm it connects to the property to the south in the proper location.
Bay/River Trail -- American Canyon to Napa	An 8+ mile recreational trail between the cities of American Canyon and Napa generally following the Napa River and interior levees of associated wetlands.	
Phase Two--Green Island Road to Soscol Ferry Road	Questa has largely completed a revised draft PUC permit application for a public crossing of the SMART tracks. SMART, NRCA and the PUC have verbally agreed to allow the railroad crossing. LSA Associates has completed a biological survey for the Fagan Marsh area; based on the results, DFG has indicated they do not want the trail alignment to follow the levee on the north side of Fagan Marsh; District staff is reviewing the feasibility of an alternative alignment. DFG, the Bay Trail Project and the Coastal Conservancy are funding the preparation of the supplemental environmental analysis for the section of the trail next to DFG's ponds 9 and 10; this work is being handled by Ducks Unlimited on behalf of DFG. District staff met with the involved parties on May 25, 2011 and again on November 9, 2011, and thought all questions with this supplemental review had been resolved, but no documents have been released for review. Staff met with BCDC staff in late November 2012 about DFG non-compliance with BCDC permit conditions to provide public access around Pond 10. In January 2013 BCDC issued a letter of non-compliance to DFW, and on March 6, 2013 all of the involved parties met to try and get the project back on track. A follow-up meeting was held April 23, 2013. Now that it appears that progress is being made regarding the trail to the north of the crossing, the Board in March approval of a new contract with Questa to complete the formal approval of the crossing. Fish and Wildlife presented a schedule for completion to BCDC at their July 18, 2013 hearing; the schedule calls for their environmental work to be done by the end of this calendar year. <u>In September 2013 we learned that DFW was now taking the position that the trail could not be permitted because endangered salt marsh harvest mice have been found in the area. Staff is meeting with partners and BCDC to try and get the project back on track.</u> Separately, District staff together with Napa Sanitation District staff toured two other water treatment facilities that have segments of the Bay Trail going through or past their facilities.	
Phase Three--Soscol Ferry Road to Napa Pipe	All permits and permissions have been obtained, and construction bid documents are done. Caltrans determined the project is eligible for federal Transportation Enhancements grant funds, and approved NEPA review for the project. However, the District was unable to complete Caltrans' extensive paperwork needed to obtain the funds, and so the funding that the District had lined up expired. <u>Staff is pursuing two potential replacement funding sources.</u>	
Berryessa Estates	Acquire 480 acres next to Berryessa Estates from BLM at no fee through their Recreation and Public Purpose Act procedure. Would serve as a wilderness park for local residents eventually be the northern trailhead for a trail between Berryess Estates and Pope Canyon.	The District in 2009 applied to BLM for a no-fee transfer of this property to the District for the no-fee transfer of this property; while this transfer has received conceptual approval by BLM staff, the formal approval has dragged; several meetings have been held over the past three years to try and speed to process, but BLM staff has so far had higher priorities. CDF crews did extensive fire break work in 2009 through 2011 to protect the residences next to the BLM land. The Fire Marshall and the Pope Valley Volunteer Fire Department have added a proposal to construct a fire substation on a corner of the property. The Fire Marshall has identified funding for the fire station, and the County Board of Supervisors is now strongly supportive. The District has completed the donation to the District of a small, 0.2 acre property that provides critical access to the northeast corner of the property. District staff in January 2013 met with the Napa County Fire Marshall and the the Calfire Battalion Chief for the area and agreed to jointly advocate for BLM action. In February staff talked with BLM and was assured that processing of the transfer was now beginning. BLM did a series of site visits June-August, 2013. The Bureau of Reclamation in June 2013 asserted that Reclamation has property rights such that BLM is not permitted to transfer the property. BLM is now projecting the transfer will be complete by the end of this calendar year. In late August Reclamation determined they still retained jurisdiction, but they have committed to completing the transfer in the same time frame as BLM would have. <u>Staff has submitted additional materials to Reclamation, who until the federal shutdown has been processing the permit.</u>
Berryessa Vista	Planning and stewardship of this 224 acre wilderness park.	Volunteers working with the District have completed detailed GIS mapping showing all existing roads, creek crossings, vista points and potential campsites. Continuing damage by off-road vehicles trespassing on the property was noted. The District sent a letter was sent to all property owners in that area introducing the District, explaining the deed restriction prohibiting off road vehicles, and asking for their cooperation. Since then there has been less observed damage, although the problem is not resolved. After observing more OHV damage in the fall of 2012, staff is preparing to install a gate to block OHV access. No other work is anticipated until Lake Berryessa Trail planning is completed, as that is a key step in gaining overland access to the property. District staff has been meeting with Reclamation, their consultants and interested parties on the trail planning and prioritization.
Blue Ridge/Berryess Peak Trail	Obtain right of way and construct trail to provide public	Obtained donated trail easement from the Ahmann family to close gaps between existing public lands on Blue Ridge. A Negative Declaration and Use Permit hearing was approved December 16, 2009 by the County Planning Commission. An Operations and Management Plan has been approved by the property owner and the District. BLM staff on April 14th inspected the proposed trail alignment where it crosses BLM land. District and BLM staff met on August 5, 2014 to discuss BLM review of this project. BLM's biologist

access to extensive federal lands on Blue Ridge and to Berryessa Peak. April 11th inspected the proposed trail alignment where it crosses BLM land. District and BLM staff met on August 5, 2011 to discuss BLM review of this project. BLM's biologist inspected the alignment on September 17, 2011. There have been volunteer trail building work parties have been held numerous times between 2011 and the present, and the trail is now done except for signage and a fence crossing. District staff met with Fish and Game on June 15, 2012 to discuss signage at the trailhead on DFG property, and in November 2012 submitted signage language for DFG review. Staff contacted DFG (now DFW) in February and again in early April to determine the status of their review, but has as of yet received no answer. 40



<p>Camp Berryessa</p> <p>Redevelopment of former Boy Scout Camp into a group/environmental education camp.</p>	<p>CEQA and NEPA review is complete, as is the Use Agreement between the District and Reclamation. A grant for \$50,000 to help with construction has been provided by the Mead Foundation, together with a \$1.5 million grant from the State Coastal Conservancy. The contract for preparation of plans and specifications with Psomas was approved by the Board at its October meeting, and Reclamation provided comments on the 90% plans on June 24, 2013. <u>The 100% version of the plans is expected by the end of the month, and will then be submitted for Reclamation's review and other necessary permits.</u> District staff completed additional soils testing in late August in hopes of finding soils that would limit the need to on-haul dirt for the Phase 2 septic system. A new water well was dug in October 2012--production is great, and quality is acceptable with minor treatment. Construction groundbreaking will be in the fall of 2013 assuming Reclamation's review and approval is not delayed. Staff met with the County Sheriff and Fire Marshall, and the CalFire Battalion Chief for the area, to review emergency services for the camp. <u>The bulk of the construction will likely occur over the Spring/Summer of 2014 with the camp opening in fall of 2014.</u></p>
<p>District Non-profit Foundation</p> <p>Organize a non-profit foundation to raise funds for District projects</p>	<p>The District Board has approved the goals, objectives and basic structure for a non-profit foundation to assist the District with fundraising. Formation of the foundation will likely be timed to the opening of Camp Berryessa.</p>
<p>Lake Hennessey North Shore Trails</p> <p>Would open up several miles of existing dirt access road, and construct approximately 1 mile of new single track trail, into a loop trail system on the north side of Lake Hennessey, and connecting to the planned Moore Creek Open Space Park trail system.</p>	<p>In November, 2009 the Napa City Council directed city staff to work with the District to finalize an agreement for the proposed Hennessey trails. A plant survey of the new section of trail was completed on April 3, 2010. The District approved a Mitigated Negative Declaration on February 14, 2011. A final lease agreement and operations plan was approved by the District Board in August 2012, and by the City Council in September 2012. The fully executed agreement was completed in November 2012. Work was completed on the connector trail to Moore Creek on June 16, 2013. Initial staff and public response to the new trail has been very positive. Public trail access is slated to be available in 2014 following the completion of City-required fencing and signage improvements. <u>In September 2013 staff started working with the City to determine the exact locations where fencing is needed.</u></p>
<p>Moore Creek Park Development</p> <p>Development of open space park on 673 acres acquired by the District adjacent to City of Napa watershed lands at Lake Hennessey to protect habitat, provide recreational trails, and overnight camping facilities.</p>	<p>All discretionary permits have been obtained, and park improvements are underway. The park opened on June 30, 2013. The entry driveway was graded and paved in November 2011 and the parking area was graded, compacted, and gravelled in 2012. The eastern boundary survey and fencing project is now underway. Monthly volunteer work parties have performed numerous tasks on the property, including cleanup of trash, trail repair and construction, fence building, restoration planting, and removal of invasive french broom. Construction of early portions of the Vista Trail was completed in 2011, and the Chiles Creek Overlook Trail was completed in 2012. The contract for construction of the ranch house septic system was approved by the Board in May 2013, and construction was completed and finalized by the County on August 23. <u>Construction of the remainder of the Valentine Vista Trail began in late September, but the contractor (Don Hays Trail Construction) was stymied by a combination of hard rock and tough drainage crossings and was only able to construct about 1,000 feet of new trail. We have a verbal commitment from the Forest Trails Alliance, who constructed the Hennessey Connector Trail this spring, to bring their substantial additional manpower to the task this winter and spring in hopes of finishing the work Don Hays was unable to complete. We have new contracts in place to repaint the exterior of the gate (Juarez) house and install a water purification system at the Ranch House and hope that those projects will be underway, or even completed, by the November Board meeting.</u></p>
<p>Napa River Ecological Reserve Restoration</p> <p>Remove invasive plants and restore native vegetation in the entryway meadow, replace damaged signage and information panels, and if feasible install a seasonal bridge</p>	<p>The CCC did mechanical and chemical weed removal and installed an all-weather surface on the trail from the parking area to the river levee, in May and June 2010. Additional invasive weed removal, mapping, and cleanup was done by volunteers on numerous occasions in 2010, 2011, 2012 and 2013. The District has used grant funding to bring several thousand students to the site to study ecology of the area and assist with the habitat restoration. Additional weed removal has been done by a private contractor under contract to the District on several occasions. Staff met with invasive plant control specialists in June 2011 to evaluate eradication efforts to date and plan next steps. Native plant cuttings gathered from the reserve were propagated and planted by volunteers in Dec 2011 and Jan 2012. Supplemental grant funding for the restoration work was awarded by the County Wildlife Commission in 2011. The Coastal Conservancy grant the District received to pay for restoration work had its deadline extended until December 2013. This time extension will allow us to continue invasive weed removal. The District received a second Napa Wildlife Commission grant for FY 2013-14 to continue weed control and environmental education, in partnership with the RCD.</p>
<p>Oat Hill Mine Trail</p> <p>Various improvements to the historic Oat Hill Mine Road</p>	<p>The litigation holding up this project has been successfully concluded. Several of the trail sign posts have been vandalized and will need to be replaced. The District is continuing to work with Tuleyome on a project to clean up the Twin Peaks and Corona Mines, in the hopes this may enable the District to safely open the northern Oat Hill Mine Trail for public use. A volunteer crew did erosion control work on the trail in January 2013. Staff and volunteers in February 2013 to did a comprehensive evaluation of erosion issues on the trail, and experts from the RCD joined staff for another evaluation in early April. The City of Calistoga and CalTrans have restarted discussions about constructing a roundabout at the intersection of Highway 29 and Silverado Trail; the District is tracking these discussions to ensure that whatever design as adopted will provide adequate and safe access to the Oat Hill Mine Trail. <u>The Bay Area Ridge Trail will be doing some cleanup and minor improvements in late October 2014 to the staging area in anticipation for the Ridge Trail dedication scheduled for November 10 2013</u></p>
<p>Oat Hill Mine Trail</p> <p>Transfer of 40 acre parcel from BLM</p>	<p>The District in 2008 applied to BLM for a non-fee transfer to the District of a 40 acre parcel at Maple Springs on the Oat Hill Mine Trail; this application is pending. Staff met with BLM in February 2011 to discuss how to speed up this transfer; another meeting with the same topic was held August 5, 2011. The District is still waiting on BLM to process the application.</p>
<p>Rector Ridge/Stags Leap Ridge Trail</p> <p>Construction of staging area and 6+ miles of Ridge Trail climbing east from Silverado Trail near Rector Creek.</p>	<p>CEQA on this project was completed several years ago--staff has prepared a draft update to the Negative Declaration due to the passage of time since the original approval. The project concept has been approved by the District Board, and was positively viewed by the Veterans Home administration. However, Veterans Home staff had been having difficulty figuring out what approval process is needed, because of ongoing discussions at the state level about the appropriate roles and future programs for the Veterans Home, and then key management staff at the Veterans Home retired in November 2010, so progress was delayed pending the filling of their vacant positions. The District will restart the process when other project priorities are under control.</p>
<p>Skyline Park Protection</p> <p>Purchase of Skyline Park from the State</p>	<p>Three past legislative efforts to authorize sale to the County failed due to unrelated disagreements between the state legislature and administration. Separately, the County in September 2009 approved a new park overlay zone and an updated Master Plan for Skyline Park. A fourth legislative effort by Assemblymember Evans in 2010, sponsored by Napa County and supported by the District, was approved by the legislature and signed by the Governor. The County and state General Services agreed on an appraisal process for determining the fair market value purchase price, the County retained an appraiser acceptable to the State, and a draft appraisal was prepared. In late April 2012 the state indicated they did not accept the value as determined by the appraisal. Negotiations have therefore stalled.</p>

<p>Spanish Valley, Crystal Flats, and Stone Corral</p> <p>Planning for open space donated by Bob and Evalyn Trinchero</p>	<p>The District took full possession of the properties on January 1, 2012. Staff met with key community leaders from Lake Berryessa Estates on February 6 and March 6, 2011. A public session was held April 21st at the Pope Valley Farm Center. The District has negotiated an easement across the District's Stone Corral property to resolve one of the clouds on the title to this land; this easement was approved by the Board at its October meeting, and has now been finalized and recorded. Staff met with the LBEPOA Board many times in 2011-2013 to discuss use of the Crystal Flats and Stone Corral areas. District staff has prepared a draft agreement between the District and the Association, which the Association is now reviewing. Negotiations have been complicated by the ongoing controversy between LBE residents and the Lake Berryessa Estates Resort Improvement District, even though they are not related issues. A contract for the <u>well and water system work needed to make the Spanish Valley well functional again was awarded to Cal-Tech Pump out of Middletown and that work is slated to begin in late October/early November. Substantial thanks are due to John Hallman, with the Berryessa Estates Fire Safe Council, who has been directing the work of a CalFire convict crew to clear away brush at the well site and along the access road in order to make the well work possible.</u> Staff completed a preliminary survey of the Spanish Valley access road in late July and, while legal access to the property has been established, it does not appear that the existing road is located within the Spanish Valley Trail easement. This will require discussions with the adjacent property owner, which may further delay our timeline for opening Spanish Valley to public use. In February 2013 several no trespassing signs were installed in response to some evidence of illegal OHV use. The Crystal Flats sign was immediately removed and the lock on the gate removed. In late June of 2013 an LBE resident involved with fire management efforts obtained the services of the Konocti prison crew to clear weeds from our access road into Spanish Valley. The District is partnering with Tuleyome to investigate and come up with the trail alignment connecting Spanish Valley to the Pope To Putah Trail on BLM land which is under construction by Tuleyome.</p>
<p>State Parks</p> <p>Operate Bothe-Napa Valley State Park and the Bale Grist Mill State Historic Park</p>	<p>The District, with assistance from the Napa Valley State Parks Association took over management of the parks on April 1, 2012. A County permit for the pool was obtained in July and the pool was reopened immediately thereafter. The state completed installing 3 yurts in October 2012. The District obtained approval in January 2013 to install an additional 8 yurts. Seven yurts have been installed; landings, paths and parking areas are nearly finished and ready for Fire Marshall's final inspection. Numerous volunteer projects have been organized (PG&amp;E event improving the Mill, firewood splitting, hazardous tree removal, mowing, pool cleaning, native plant garden maintenance, historic orchard restoration, lots of trash removal, and in September/October a footbridge on the History Trail was repaired by the St Helena Kiwanis). A volunteer forestry management group has been formed and the District has acquired a boom truck and other equipment in support of their mission. Utility service accounts have been transferred from the state to the District. Work on an improved recycling system is nearly complete. Every septic tank in the park has been pumped clean, and sewer lines were located and cleared of root blockages. Two additional failed septic tanks were discovered in March and pumped clean. Nearly \$270,000 in gifts, grants and pledges have been obtained to assist with improvements at the parks. The District and State Parks have finalized an agreement regarding the "found" state money that provides up to \$537,800 in State funds being granted to the District to cover some salaries and two capital improvement projects (replacement roofs and AC overlay to the picnic area road). The District is sponsoring SB 170 (Wolk) which would exempt the mill from state food processing facility requirements so that flour from the mill can be sold as a food item; the bill has passed the Senate and all Assembly committees, but unfortunately in late July the Department of Public Health announced their opposition to the bill. After meeting with DPH, it appears they may be willing to agree to a workable compromise; this will take time to explore, so we have made the bill a two-year bill. <u>Final approval of seven yurts was received in the last week of September 2013; the yurts will be reservable on Reserve American before the end of October 2013.</u></p>
<p>Vallejo Lakes</p> <p>Possible purchase of 1100 acres of surplus Vallejo Water District lands, of which 200 acres are located in Napa County</p>	<p>Discussions between the District, the Land Trust of Napa County, the County of Solano and the Solano Land Trust indicate a common desire to work together to purchase this property adjacent to Skyline Park. The City Council of the City of Vallejo has officially authorized staff to pursue surplusing of the property. The City of Vallejo has hired an appraiser to prepare an estimate of the property's fair market value, but this has not yet been released. The District GM, together with the County of Solano EO, in February 2012 each sent letters to the City of Vallejo formally expressing interest in the property and requesting notification per state law of any planned surplusing of the property. The District's analysis of County ROW's with potential for recreational trails identified a potential ROW through the Vallejo Lakes property; however, it appears that one short section of the historic ROW is in Solano County and appears to not have been properly established. Sale of the property by the City has been delayed because of complications related to questions about how best to supply water to residents in Green Valley. The Trust for Public Land has expressed interest in assisting with the purchase of this area. The District together with Solano Land Trust and Ridge Trail staff met with City of Vallejo staff in mid-August; it appears the matter of whether and how to dispose of these lands will come to the City Council <u>early in 2014.</u></p>
<p>Vine Trail</p> <p>A Class I bicycle/pedestrian path extending from Calistoga to the Vallejo Ferry Terminal sponsored by the Vine Trail Coalition, of which the District is a participating member.</p>	<p>The District has entered into an MOU with the Vine Trail Coalition to provide assistance as requested by the Coalition in receiving funds, preparing plans and environmental documents, constructing and operating the trail. The District, the Bay Area Ridge Trail, the San Francisco Bay Trail and the Vine Trail Coalition have prepared a joint Case Statement for the combined trail network for fundraising purposes. The District on February 5, 2010 submitted an appropriations request for FY 2011 to Senator Feinstein, and a similar request to Congressman Thompson on February 26, 2010 on behalf of the Vine Trail Coalition. Approximately \$135,000 in federal Transportation Enhancements funding was available to construct the section of the trail under the Butler Bridge, but the District was not able to process the paperwork through Caltrans in time to use these funds. Replacement funding is now being sought. The District in April 2013 approved and sent a letter of support for the City of Calistoga's request for a grant from the Coastal Conservancy to plan the trail through Calistoga. The Board President in early June sent a letter of support for a Vine Trail federal "Tiger" grant to help construct the section of trail between Yountville and Napa. The Vine Trail is now proposed to in part run through Bothe-Napa Valley State Park.</p>

Completed Projects

<p>Bay Area Ridge Trail Realignment  Amendment to the proposed alignment of the Bay Area  Ridge Trail extend north to the Oat Hill Mine Trail</p>	<p>In December of 2012 the Bay Area Ridge Trail Council approved the proposed realignment of the Ridge Trail through Napa County as requested by the District.</p>
<p>Bay/River Trail -- American Canyon to Napa Phase I  Phase One--Eucllyptus Drive to Green Island Road</p>	<p>Construction of approximately 5 miles of Class I bicycle and pedestrian path in the vicinity of American Canyon along the Napa River was completed in April 2012, in partnership with the City of American Canyon, Department of Fish and Game and Napa Vallejo Waste Management Authority. A formal opening ceremony was held June 2, 2012.</p>
<p>Berryessa Vista Acquisition  Purchase of 224 acres from the Land Trust of Napa County for use as a public park completed in early 2008 using State Prop 12 funds.</p>	
<p>Connolly Ranch  Construction of patio, restrooms and cooking facilities completed in 2008 using State Prop 12 funds.</p>	
<p>Oat Hill Mine Trail  The Oat Hill Mine Trail was formally opened in May of 2008, after a major volunteer work party doing signage installation, brush removal and erosion control.</p>	
<p>Historic ROW Analysis  Study to determine location and status of historic road  Rights-of-Way and whether they have value as non-  motorized recreational trails</p>	<p>Staff has completed a comprehensive review of historic rights-of-way, and is now focusing attention on those which have greatest potential.</p>
<p>Linda Falls  Conservation easement accepted in spring 2008 from Land Trust of Napa County to provide additional protection for this 39 acre property, which is owned by the land trust</p>	
<p>Master Plan Development  The Master Plan for 2008-2013 was approved in January 2009</p>	
<p>Master Plan Update  First scheduled update to the Master Plan adopted in  January 2009</p>	<p>Board adhoc committee appointed. Methodology for doing update has been agreed upon. Project was delayed due to competing demands on staff time (primarily the effort to keep Napa's state parks from closing. A draft update has been prepared by staff working with the Board ad hoc committee for the Master Plan update, and released by the Board at the April 9, 2012 meeting for public comment. The plan update was adopted by the Board at its June 2012 meeting.</p>
<p>Milliken Reservoir Trails and Picnic Area Feasibility Study  Would construct approximately 3 miles of Bay Area  Ridge Trail plus additional feeder and loop trails, along  with a staging and picnic area</p>	<p>The feasibility study has been completed, and accepted by the Board of Directors. The Napa City Council in November, 2009 approved city staff recommendation to hold off on the Milliken Reservoir trails project until the Hennessey trail project is up and running.</p>
<p>Moore Creek Open Space Park  Acquisition of 673 acres in the Moore Creek Watershed completed in December 2008.</p>	
<p>Napa River Ecological Reserve Improvements  Parking area paved, and rock barrier installed to control vehicular access in 2007. Trash enclosure constructed and entry signs restored by volunteers in 2008. Deteriorated kiosk removed in 2008. The District in July 2008 assumed the County's role in managing the preserve under the joint management agreement with DFG. A new maintenance contract with the non-profit organization Options 3 was started in January 2009. The old deteriorated information kiosk, which had become a serious eyesore, was removed in November 2008.</p>	
<p>Napa River Flood Control Easement  Conservation easement accepted by District in 2007 to facilitate Flood District project and grant funding</p>	
<p>Newell Preserve Improvements  Provide on-site water supply for group campground for  cattle</p>	<p>As part of the arrangement with the land trust on the District's purchase of Berryessa Vista, the land trust was willing to use some of the proceeds from the transaction to fund a well pump and distribution system at the Preserve. However, the first well drilled by the City of American Canyon came up dry. The City has dropped plans for digging any more test wells.</p>
<p>River to Ridge Trail Enhancements  Installation of animal silhouettes along the entryway fence illustrating the types of birds and mammals that can be found in the area completed by Eagle Scout candidate in 2008. In November 2008 five Valley Oak trees were planted at the Highway 221 entrance to the trail with the assistance of a volunteer from CNPS.</p>	
<p>River to Ridge Trail    Lot line adjustment to legalize River to Ridge Trail as  constructed (it curenly encroaches on private property</p>	<p>Deeds accomplishing the adjustment in property boundaries between Syar and the State have been recorded.</p>
<p>River to Ridge Trail Entrance Enhancements  A new information kiosk was installed at the entrance in December 2008 as part of a Boy Scout project. Several Live Oak seedlings were donated by CNPS and have been planted at the entrance to improve its appearance.</p>	
<p>River to Ridge Trail  Correct drainage problems to trail can be used year-  round.</p>	<p>Two volunteer work weekends in March and April and two more in May of 2010 were organized by the District to clear brush, improve drainage, and surface about 300 feet of the trail with quarry fines to control problems with mud. Volunteers completed additional work in August 2011.</p>

Skyline Park Road and Trail Improvements	Erosion control work on Lake Marie Road, and paving of campground loop road, completed in 2007 using State Prop 12 funds.
Skyline Park Concessionaire Agreement Renewal	District staff negotiated renewal of concessionaire agreement on behalf of the County. The renewal involved changes to the fee schedule and amendments to and approval of subagreements with three non-profit partner organizations.
Skyline Park Trail Improvements	Staff worked with SPCA and V-O-CAL to sponsor a weekend work party on October 15-17, 2010. Approximately 110 volunteers worked to reroute and repair trails experiencing serious erosion problems. SPCA is donating \$1,000 toward expenses.
Major volunteer event to reroute and repair trails	
Skyline Park Facility Improvements	The proposals for a second greenhouse and a covered arena were approved by the Department of General Services and by the County Board of Supervisors. The sponsors of these projects are now raising funds for implementation.
Partner-sponsored improvement include a second greenhouse and a covered equestrian arena.	
South Napa Wetlands Habitat Area	Transfer was approved in concept by the flood control district, and Park District staff prepared the first draft of a transfer agreement. Subsequently, attorney's for the flood district concluded it would be better from their perspective for the flood district to retain ownership of the property, due to their ongoing maintenance obligations.
Transfer to the District those wetlands owned by the Napa County flood control district between the Napa River, Highway 29 and Newport Drive for use as habitat and nature-based recreation.	
State Parks	The District took over operations of the parks on April 1, 2012, and have a 5 year agreement with the State to continue operating the parks.
Assume management of Bothe-Napa Valley State Park and keep it and the Bale Grist Mill open	
Trinchero Open Space Acquisition	The donation was completed on December 29, 2010. A related granting of an access easement to the Lake Berryessa Resort Improvement District was completed in mid-January 2011.
Donation of 3,400 acres of open space to the District by Bob and Evalyn Trinchero	
Wild Lake Ranch	The District participated in the development of a strategic plan for the property, together with other public lands in the area, that was led by the Land Trust of Napa County. The land trust has decided, at least for the near term, to manage the Wildlake-Duff property itself.
Assist land trust with planning and possible joint management of trails, camping and picnic areas.	